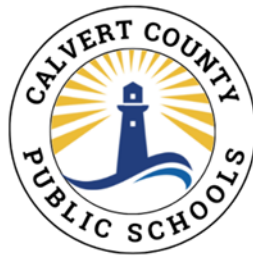


# Educational Facilities Master Plan

## FY 2025



Inez N. Claggett, President  
Antoine S. White, Vice President  
Dawn C. Balinski, Member  
Lisa M. Grenis, Member  
Jana L. Smith-Post, Member  
Margaret C. Rathgeb, Student Member  
Dr. Andraé Townsel, Superintendent

BOARD OF EDUCATION OF CALVERT COUNTY  
Prince Frederick, Maryland 20678



EDUCATIONAL FACILITIES MASTER PLAN  
FOR FISCAL YEAR 2025

*Prepared in accordance with COMAR Section 14.39.02.02*

### **WEB ACCESSIBILITY MESSAGE**

Some sections of this document were not created by Calvert County Public Schools and cannot be made accessible. If you should require assistance in obtaining details or information contained within this document, please contact the Calvert County Public Schools Board of Education at 443-550-8000.

## **TABLE OF CONTENTS**

### **I. EDUCATIONAL FACILITIES MASTER PLAN**

Vision for the Calvert County Public Schools.....	9
Strategic Plan Priority Areas .....	9
Location .....	11
Background Data.....	11
Population Trends.....	13
Population Projections .....	14
Population Counts, Estimate and Projection .....	15
Table I - Residential Building Permits.....	17
Community Analysis.....	17
Planning.....	20
Staff Ratios .....	24
Organization Pattern .....	24
School Attendance Areas .....	24
Property Disposal.....	25
Transportation .....	25
Human Resources .....	26
General Education Learning Environments in the 21 <sup>st</sup> Century.....	27
Special Education .....	28
Career & Technology Education.....	29
School Site Analysis - Southern Region .....	32
School Site Analysis - Central Region .....	33
School Site Analysis - Northern Region.....	36
School Site Analysis - Calvert Regional Facilities .....	38
CCPS Virtual Academy .....	40
Birth Rates .....	41
Table II - Births/Deaths Ratio .....	41
Instructional Plan Support Data .....	41
Public and Private School Enrollment .....	42
Table III - Enrollment.....	43
Graduation Rate of Calvert County High Schools.....	44
Table IV -Graduation Rate of Calvert County High Schools.....	44
Enrollment Projections .....	45
Table V - Enrollment Projections .....	46
FTE Enrollment Projections .....	47
FTE Enrollment Projections by Grade for 2032 .....	71

### **II. FACILITIES INVENTORY**

Appeal Elementary, Barstow Elementary, Beach Elementary, Calvert  
Elementary, Dowell Elementary, Huntingtown Elementary, Mt. Harmony

Elementary .....	74
Mutual Elementary, Patuxent Elementary, Plum Point Elementary St. Leonard Elementary, Sunderland Elementary, Windy Hill Elementary .....	75
Calvert Middle, Mill Creek Middle, Northern Middle, Plum Point Middle, Southern Middle, Windy Hill Middle.....	76
Calvert High, Huntingtown High, Northern High, Patuxent High, Career and Technology Academy, Calvert Country, Hunting Creek Annex .....	77
<b>III. FACILITY NEEDS</b>	
Facility Needs Summary .....	80
Systemic Projects Summary.....	81
Projected School Needs .....	85
Letter from Maryland Department of Planning .....	87
Non-Discrimination Statement .....	89
Affidavit of Approval - Board of Education Meeting on June 15, 2023 .....	90
Letter from Calvert County Department of Planning & Zoning .....	91
<b>IV. APPENDIX</b>	
Appendix A – Location .....	94
Appendix B – Election Districts .....	95
Appendix C – Public Facilities .....	96
Appendix D – Water Plan.....	97
Appendix E – Projected Regional Sanitary Districts.....	98
Appendix F-1 – Priority Preservation Areas Map.....	99
Appendix F-2 – Future Land Use Map .....	100
Appendix G – Elementary School Boundaries .....	101
Appendix H - Middle School Boundaries.....	102
Appendix I - High School Boundaries .....	103
Appendix J – Existing Feeder Plan .....	104
Appendix K – Former School Inventory.....	105
Appendix L – School Closing Policy & Procedures 1730 & 1730.1 .....	106
Appendix M - Notification Chain Procedures 1510.2 .....	109
Appendix N - Employee Working Hours Procedures 1510.3.....	110
Appendix O - School Facility General Information.....	113
Appendix P - School Geographical Attendance Policy & Procedures .....	185
Appendix Q - Directory of Schools.....	193

**THIS PAGE LEFT BLANK**

## SECTION I

# EDUCATIONAL FACILITIES MASTER PLAN

## **EDUCATIONAL FACILITIES MASTER PLAN**

The philosophy, direction, and outcomes for this school system are determined by the Board of Education of Calvert County, with the assistance of the Superintendent and the professional staff. Goals of the staff, therefore, reflect the educational objectives as outlined in the basic philosophy of the school system.

Input for the philosophy, direction and outcomes is received from the professional staff, citizen advisory committees, parent-school organizations, and other similar community groups and agencies. Such input is essential to ensure relevance of the school program to perceived community needs.

Calvert County Public Schools (CCPS) and support facilities are well maintained to best serve the rigors of the instructional programs offered to our students and also those programs offered by our County Government and private interests.

The following text provides the basis for which our facility needs are established. It further reflects on our operating procedures, planning and community analysis, our inventory evaluation, and enrollment data.

## **Vision Statement**

To produce graduates who are responsible citizens with career and educational choices in the 21st century.

## **Mission Statement**

The Calvert County Board of Education ensures excellence in education for our students through vigilant oversight, sound policies, and meaningful community engagement.

## **Strategic Plan Priority Areas**

CCPS prides itself on educating and preparing each student to succeed in a changing world. Serving more than 15,000 students, the district must rise to the challenge of meeting the unique needs of every student. In order to focus the district's efforts and ensure positive student outcomes, CCPS consulted with a number of constituent focus groups and convened a Strategic Planning Steering Committee. The committee, comprised of the Superintendent, a school board member, and central office and school-based staff, worked to guide the development of a long-term strategic plan. This plan was approved by the Board of Education on September 14, 2017 and serves as a living document that will guide the academic and operational direction of the district for a five year period.

CCPS has identified five (5) key priority areas that will help the district in achievement its mission of producing graduates who are responsible citizens with options and choices in the 21<sup>st</sup> century. These priorities will be used by CCPS to align internal systems, processes, and resources in a transparent and focused way.

### **Equity**

- Provide equitable learning opportunities for each student to become a motivated, independent, civil, and successful learner;
- Ensure a culturally competent and responsive workforce;

- Provide for equitable allocation of resources that is transparent and is clearly communicated.

### Student Outcomes

- Promote growth for each student;
- Eliminate achievement gaps;
- Enhance opportunities for high ability learners to thrive and be academically challenged;
- Prepare and guide students to transition successfully to postsecondary education and/or career-focused options;
- Expand and support the integration of digital learning to ensure each student is prepared for a technologically advanced society.

### Climate and Culture

- Integrate students' social-emotional and behavioral learning into daily instruction;
- Provide a nurturing, accepting, respectful, safe, and secure environment for all;
- Build and sustain wellness and morale amongst staff;
- Develop and maintain positive and inclusive school communities.

### Workforce

- Ensure the diversity of our workforce;
- Attract and retain high-quality staff;
- Provide staff with personalized and differentiated professional learning that fosters personal growth in order to increase student success.

### Community Engagement

- Ensure that all staff, families, and community businesses and organizations are actively engaged with the district as advocates, allies, and partners to increase equity, access to opportunity, and outcomes for all students.

\* \* \* \*

## **LOCATION**

Calvert County is a peninsula located approximately 20 miles southeast of Washington, D. C. and approximately 45 miles south of Baltimore. Maryland State Route 4, a four-lane highway, provides the main link for Calvert County residents to the greater Washington/Baltimore/Annapolis Metropolitan area. Maryland State Route 2 provides access to Annapolis and Anne Arundel County, with Route 231 providing the link to Charles County to the west. Route 4 South and the Thomas Johnson Bridge provide the link to St. Mary's County and the Patuxent Naval Air Station. This link is critical for residents employed at this facility.

## **BACKGROUND DATA**

There are two incorporated towns, Chesapeake Beach and North Beach, situated in the Northeast quadrant of the County and seven unincorporated Town Centers. The Town Centers are from north to south, Dunkirk, Owings, Huntingtown, Prince Frederick, St. Leonard, Lusby, and Solomons. All of the Town Centers are situated along the Maryland Route 2 and 4 corridor and provide the commercial and service-related businesses for Calvert residents.

The consequence of being a bedroom community to the Washington, Baltimore and Annapolis metropolitan areas is that the majority of wage earners are required to travel out of the county for employment. This scenario has not only created traffic congestion on the main arteries, but it also diminishes the time citizens can dedicate to family and civic activities. Indirectly, many children are in situations where they are enrolled for an extended period of time each day and/or enrolled in day care and after-school programs. This scenario has a direct impact on school services.

Economic development that will support skilled craftsmen, technical trades, and professional employment opportunities continue to be elusive. Options that will allow for a reduction in the number of residents who must drive out of the county each day for employment continues to be a county priority. Although some small business enterprises have opted to locate in the county, more efforts continue to be focused on attracting

additional businesses to the county.

The COVID-19 pandemic created not only a heightened awareness of the possibilities of working from home, but it also jumpstarted a true expansion of affordable broadband to underserved areas in the county. Both these developments could help explain the large increase in new business start-ups that were seen in Calvert, Maryland, and across the U.S. and gives bedroom communities such as Calvert hope for an increased and more diverse economic base.

Traffic congestion along the Route 2 and Route 4 corridor through Calvert County continues to be a major concern for both our local government and the Maryland State Highway Administration (MSHA). The Town Centers of Dunkirk, Prince Frederick, Huntingtown and Solomons experience rush hour delays and increased traffic accidents related to the congestion. The Thomas Johnson Bridge connects Calvert to its neighbor to the south, St. Mary's County and the Patuxent Naval Air Station, via a 2-lane bridge, which experiences frequent delays during peak travel times. In 2015, MSHA completed a study of a section of Rt 4 from Patuxent Point Parkway, to Rt. 235 in St. Mary's County, stemming from daily commuter traffic congestion. The future project, designed to improve existing capacity and traffic operations, is on hold, due to funding. Improvements along Rt 2/4 between Fox Run Boulevard and Route 231 in Prince Frederick are complete. To reduce congestion, a multi-phased project widened this major artery, from four lanes to six lanes, and included turn lanes.

On the northern end of the county, MDOT SHA is currently in the process of making improvements along the the MD 4 / Mount Harmony Road Intersection Improvement project. The \$1.9 million intersection improvements include constructing a concrete channelization island, providing a right-turn only movement from Mount Harmony Road onto northbound MD 4.

MSHA has completed roadway reconstruction on the portion of MD 261, in North Beach, from 9<sup>th</sup> Street in Calvert County to Bay Avenue in Anne Arundel County. The reconstruction focused on the section of roadway between the Chesapeake Bay and an inland wetland. Improvements included raising the roadway elevation and replacement of the bridge. Based on evaluation of future sea level impacts, these improvements will

enhance flood protection for the roadway potential flooding due to impacts of future sea level rise.

In keeping with the Prince Frederick Town Center Master Plan, the County has been building portions of the “loop road” project in Prince Frederick. The Armory Road to Main Street section of the east side “loop road” is complete. The west side of the “loop road” has been completed from Auto Drive to Yearling Drive, located south of MD 231.

### **POPULATION TRENDS**

Calvert County’s population has grown by 1,788 residents between April 1, 2020, the census estimate base date and July 1, 2022, as reported by the Maryland Department of Planning. The county’s population as a whole, has been aging. Between 2010 and 2020, the percentage of residents, 65 and older, grew from 11 percent of the total population to 16 percent, where it is holding in 2021. Slow growth measures of the past, enacted by previous Boards of County Commissioners, limited new housing inventory over the last few years. Additionally, high home prices have been a barrier to entry for young couples. In recent years, these ripple effects have begun to be subside, through the on-going efforts to focus housing and commercial development within Town Centers. 2020 and 2021 saw increased residential construction activity over previous levels, however as of 2022, new housing starts and the turnover rate for existing home inventory have both decreased, compared to the last few years. The increase in residential mortgage interest rates coupled with escalating home sales prices are contributing factors, and help explain some of the decrease. The most recent population estimate available from the U.S. Census Bureau for July 1, 2022 is 94,573. The estimated county population for January 1, 2023 is 94,750, a 0.22% increase from 2022 (source Calvert County Department of Planning & Zoning, April 2023).

In 2022, 112 residential building permits were issued throughout the county, representing a 45% decrease over 2021. 25 percent of permits issued stem from three major subdivisions; one is located in the first district and was recorded several years ago. The other two subdivisions are located in the third district, in Chesapeake Beach, and

account for 16 of the total permits issued.

Developers continue to work on projects in the Barstow and Beach elementary schools' areas. A few smaller single-family subdivisions are in various stages of planning in the Plum Point and Huntingtown areas. Additionally, a major multi-family subdivision in the southern part of the county is advancing in the planning stages.

## **POPULATION PROJECTIONS**

Calvert County Department of Planning & Zoning relies on Maryland Department of Planning's projections rather than develop its own. The County produces a population estimate for Jan. 1<sup>st</sup> of the current year based upon the Census Bureau's population estimate for July 1<sup>st</sup> of the previous year and use & occupancy permits for the subsequent six months. State projections are based primarily on birth/death rates and county job opportunities as a factor of immigration. The U.S. Census Bureau's estimate of Calvert County's population for July 1, 2022 is 94,573. The county's population estimate for January 1, 2023 is 94,750.

The median residential sales price in Calvert County remains one of the highest in Maryland. Based on data provided through Maryland Department of Planning, the annual median price increased by 6.8% between 2020 and 2021. In 2021, Calvert ranked as the seventh most expensive in Maryland, with a median sales price of \$390,000. As of February 2023, this figure has increased to \$400,000. A majority of new housing starts continue to be in the \$400,000 or higher price range, and with the rising interest rates, such a purchase is not conducive to young couples. The county housing stock is comprised of single-family homes, however, over the last three years, higher density developments have been growing within the Prince Frederick Town Center. These include a 249- unit apartment complex, with units ranging from 1-bedroom up to 3-bedroom units. Several townhome communities and apartments are additionally in various stages of development within the Prince Frederick area. The demand for workforce housing is seeing growth in similar higher-density developments, within the southern end of the county. A 276-unit multi-family community in Lusby is in its preliminary stages of development.

Although issued permits present a skewed picture, due to 25 percent of permits originating from three major subdivisions, the pattern of the growth within the county appears to be consistent with areas that are forecasted to grow. Those areas are the central part of the county surrounding the Prince Frederick Town Center and the northern part of the county which includes the Dunkirk Town Center and the Town of Chesapeake Beach. It is important to note that the Town of Chesapeake Beach, an incorporated area, is not subject to Calvert County's adequate public facility regulations.

Our student enrollment projections generally reflect a modest net increase through 2032.

See the Comparative Population Projections chart below.

### **POPULATION COUNTS, ESTIMATE AND PROJECTION**

<b><u>Source</u></b>	<b><u>2010</u></b>	<b><u>2021</u></b>	<b><u>2022</u></b>	<b><u>2023</u></b>	<b><u>2025</u></b>
Md. Department of Planning		93,928		-	95,510
Calvert County Department of Planning & Zoning		93,610 (Jan 1)	94,540 (Jan 1)	94,750 (Jan 1)	-
Bureau of Census	88,737	93,310	94,573		-

State projections indicate a 0.42 percent annualized growth rate between 2021 and 2025. State projections are based primarily on birth/death rates and county job opportunities as a factor of immigration. Factors that continue to attract new families to Calvert County include, but are not limited to, the following:

- a. The proximity to Annapolis, Baltimore and Washington, D.C.
- b. The excellent reputation of the Calvert County Public School System.
- c. The Patuxent River Naval Air Station and the related businesses moving into the area.

- d. A sound county fiscal program has helped to minimize increases to the property tax rate while maintaining the county's AAA bond rating. In 2019, the county lowered the tax rate from \$0.952 to \$0.937, again in 2021 from \$0.937 to \$0.932, and again in 2022 from \$0.932 to \$0.927, for a total reduction since 2018 of \$0.025. As of July 1, 2021, the county's property tax rate is sixth lowest and income tax rate is seventh lowest in the state.
- e. Many attractive natural and recreational resources: Chesapeake Bay front, Patuxent River front, State parks, County recreational parks, marinas, the Calvert Marine Museum, Annmarie Sculpture Garden and Arts Center, the development of the Solomons area as a recreational center, the County aquatic center, and over 30 miles of hiking trails.
- f. The continuing trend in 2021 of urban residents moving out to rural/suburban homes in search of more space due to COVID-related life changes in the areas of work and education.

Previous strategies to control growth had caused developers to utilize their remaining building lot inventories, however over the last few years, there has been an increase in submission of new concept plans for major subdivisions. Although there was a rise in residential permits in 2020 and 2021, following COVID, 2022 saw a sharp decrease in the total number of permits issued. 112 permits were issued in 2022, compared to 204 in 2021, representing a 45 percent decrease over the previous year. This represents the lowest number of permits over the last 9 years.

A comparison of permits processed vs. permits issued shows a similar trend. In 2022, a total of 107 permits were processed, compared to 216 permits processed in 2021, representing a 49.5 percent decrease in a year. The largest decrease in permits processed, was seen in District 1, where one major sub-division has been built out over the last several years, with the number of developable lots coming to a close. Additionally, changes in stormwater management regulations as well as new project submission requirements adopted by the Department of Public Works in 2022 required all projects in the county review pipeline at the time, to comply. These may be contributing factors to the slowdown in developers and builders applying for permits in 2022.

Recapping the permits issued in 2022, 40 permits or 36% were issued in the 1<sup>st</sup> District, with 10 permits originating from one subdivision. 30 permits, representing 27% of total permits, were issued in the 2<sup>nd</sup> District. 42 permits or 37% were issued in the 3<sup>rd</sup>

District. 16 of these permits originated from lots located in Chesapeake Beach. It is worth noting that the 2 incorporated towns of Chesapeake Beach and North Beach are located within the 3<sup>rd</sup> District and are not subject to the County's adequate public facilities regulations. See Table I.

**TABLE I**  
*Residential Building Permits*

Year	1 <sup>st</sup> District		2 <sup>nd</sup> District		3 <sup>rd</sup> District		County
<u>2013</u>	31	12%	125	50%	96	38%	252
<u>2014</u>	82	17%	117	61%	41	22%	190
<u>2015</u>	79	26%	176	59%	44	15%	299
<u>2016</u>	91	40%	92	41%	42	19%	226
<u>2017</u>	106	42%	109	43%	38	15%	253
<u>2018</u>	37	24%	76	50%	39	26%	152
<u>2019</u>	56	35%	53	33%	50	31%	159
<u>2020</u>	99	51%	36	19%	57	30%	192
<u>2021</u>	86	42%	34	17%	84	41%	204
<u>2022</u>	40	36%	30	27%	42	37%	112

\* Estimate

Percentage is of Total County Permits

## **COMMUNITY ANALYSIS**

The combined effects of the economy and the County and State's measures to slow growth have reduced housing starts, over the previous decade. The Sustainable Growth and Agricultural Preservation Act of 2012 (aka, SB 236) limits major subdivisions in rural areas which potentially limits residential development to Priority Funded Areas and town centers. The town centers of Solomons, Lusby, Prince Frederick and the incorporated towns of Chesapeake Beach and North Beach are the only development centers available with adequate infrastructure to allow major residential development. The town centers of St. Leonard, Huntingtown, Owings and Dunkirk are not as well positioned in terms of public infrastructure to accommodate development.

The town centers of Lusby, Prince Frederick, and Dunkirk and the incorporated Town of Chesapeake Beach have all experienced some commercial development which has impacted traffic during peak weekday commuting.

Over the last 15 years, the Town of Chesapeake Beach experienced an increase in residential development. This area is very marketable and has the supporting public infrastructure to permit development. The town annexed two major developments into the corporate limits, causing the schools serving this region to be over stressed. A minor redistricting a few years ago helped to alleviate this region's schools. However, the Town of Chesapeake Beach does not utilize or have an Adequate Public Facility Ordinance which would mitigate the impact on the Calvert County resources and schools. We visit this issue later in the School Site Analysis section of this document.

The Models and Guidelines for Smart Growth prepared by the Maryland Department of Planning has created a much closer integration of county planning and school facility planning efforts. This effort is most noticeable within the Prince Frederick Town Center region where our Career and Technology Academy, Calvert Middle School and Calvert High Schools are on the same campus. New county connector streets with sidewalks provide walkability and safe route connections to not only the school campus but to present and future public amenities. Community use space has been incorporated into Calvert Middle School and Calvert High School such as space for the County Parks & Recreation program and a larger auditorium. The Career and Technology Academy provides instructional space for residents of the Calvert Pines Retirement Community and students attending the College of Southern Maryland. The community aquatic center situated in Prince Frederick Town Center provides amenities to the public, plus an Olympic size pool utilized by our schools' swimming program.

There is a need for a community center to serve the 2<sup>nd</sup> Election District (middle county). The Calvert County Government has provided community centers within the 1<sup>st</sup> election district (south county) and the 3<sup>rd</sup> election district (north county). In 2015, the county purchased and converted a commercial building across the street from Calvert High School into a temporary community center. Plans for a permanent new state of the art community and recreation facility, to be located on Fairgrounds Road in Prince Frederick, are scheduled to be developed, based on funding availability, in the future.

The County is developing additional parks and recreational amenities for Calvert's citizens in the northern and southern ends of the county. Ward Farm Recreation and

Nature Park, located in Dunkirk, is a multi-phased project consisting of multiple playfields, trails, pavilions, and a nature center. Dominion Energy Regional Park, located in Lusby, is the former site that was used for staging and parking, by the Dominion Energy Cove Point LNG project. Currently in design, it will be developed as a “destination park” using a multi-phased approach, and consist of trails, tennis courts, ballfields, picnic pavilions, and an indoor recreation center.

The need to centralize county government services has been discussed over the last few years. The need for the project arose partly from the fact that, of the more than 1,200 Calvert County Government employees, just under half of them were permanently located in 11 leased facilities in Prince Frederick. A new county services complex in Prince Frederick is currently in the bidding phase, with the intention to build a facility that will house a majority of county government functions in one location to serve residents. As of Spring 2021, the existing County Services Building had been demolished to accommodate construction of the new facility and county departments had relocated to alternative locations.

In August of 2019, a new County Comprehensive Plan was adopted by the Board of County Commissioners. This policy document outlines a Future Land Use Plan, which establishes 9 land use categories, with a central focus on future development occurring within the Town Centers. In December of 2022, the Board of County Commissioners adopted amendments to the Plan that reduced or eliminated future expansions for the Huntingtown, Lusby, Prince Frederick, and Solomons Town Centers. The first draft of the Prince Frederick Town Center Master Plan needs to be revised to reflect the removal of the Phase 2 expansion of the Prince Frederick Town Center. Initial public meetings to solicit input to the Dunkirk Town Center Master Plan update were conducted in 2021. Focus areas of discussion have included land use, public infrastructure, and economic vitality. The draft plan development process commenced in Spring 2023 and is expected to continue through 2023.

Calvert County has embraced the Smart Growth initiatives endorsed by the Governor and the Maryland Department of Planning. The county has adopted the Growth Tier Map, thereby identifying areas where major and minor subdivisions may occur

within the county.

Schools which are situated in or serve town centers are so noted in the school site analysis regional descriptions found later in this document.

## **THE PLANNING PROCESS**

The annual Capital Improvement Program is completed in three phases: a survey phase, a developmental phase, and the hearing phase.

### **Survey Phase:**

During the survey phase, each school principal is invited to submit requests for alterations or improvements based upon student population projections and program needs. The School Facility and Maintenance Department is also requested to submit projects which are of a systemic nature that will improve building operations, maintenance and energy consumption. Changes that may require facility alterations include instructional technology systems, grade group organization, or instructional enhancements. The various demographic projections used in the developmental phase are completed and/or updated during this phase of the process.

Project planning also requires the involvement of our Calvert County Department of Planning & Zoning to best locate new facilities within the designated growth centers of the county. Existing facilities which are situated outside of the designated growth areas and serve the designated growth areas will be considered as support infrastructure for the designated growth area. Calvert County has designated town centers as growth areas which are recognized by the State as Priority Funding Areas (PFAs). The PFAs, including the Towns of Chesapeake Beach and North Beach, are to reflect the Models and Guidelines Series 27, Smart Growth, Community Planning, and Public School Construction. Through communication with the various local government agencies, provisions for park and recreation space and community use spaces are provided within a school design.

### **Developmental Phase:**

The development phase involves the procurement of professional services such as

architectural, engineering, civil, and consultants to assist with the eventual State Interagency Commission on School Construction (IAC), Maryland State Department of Education (MSDE) and other local and jurisdictional project submissions.

Detailed educational specifications describe the instructional program requirements at each school level. Students, teachers, administrators, and community resource personnel, working with the established county curriculum, develop the educational specifications for each facility. This document contains a description of the programs and activities to be offered at the school building. Architectural drawings are then developed consistent with the educational specifications. Reviews are conducted of all architectural drawings and equipment by members of the Board of Education and staff before acceptance and forwarded to the State Interagency Commission on School Construction (IAC). All education specifications shall be in accordance with Calvert County Public Schools Policy Statement #7004 for school renovation, limited renovation, addition, and/or new construction projects. In addition, various sustainability and regulatory elements such as High-Performance building design, current code requirements, and local emergency sheltering requirements are to be considered as part of the educational specification.

Should a project involve the expansion of a secondary school facility, the Department of Instruction will need to coordinate the Career and Technology curriculum with MSDE.

School site selection(s) require approval per the guidelines defined by the IAC. Said site approval must be accomplished prior to any state reviews and subsequent funding approvals. Site considerations must be compatible with any and all state and local ordinances. Also, the site(s) must be within the guidelines of the Calvert County Comprehensive Plan and fall within or be adjacent to a Priority Funded Area. Site procurement shall be in accordance with Calvert County Public Schools Policy Statement #7210. Site size is reflected in the specific educational specification for a project. If a site size is not specified in an educational specification then our general rule of thumb, although unwritten, is a minimum 16 acres for an elementary school, 25 acres for a middle school and 80 acres for a high school. Rural vs. urban settings require varying flexibilities.

It is important to note that after-hour use of our school facilities by the Calvert County Parks & Recreation Division is an important planning consideration. The athletic fields, gymnasium and some classroom spaces are utilized at our elementary and middle school campuses. The high school campuses are used infrequently due to the extensive after-hour use by the high school programs. The high school auditoriums and media centers are often available for community use. The Calvert County Government has an inventory of additional athletic fields primarily for public and private use but the fields are not used by Calvert County Public Schools. The maintenance of the elementary and middle school athletic fields is shared by the County Government and Calvert County Public Schools. Additionally, our partnership extends to the Calvert County Health Department. Behavioral Health therapists offer counseling services to students at all schools, during the instructional day, for maximized access and ease of use.

The Edward T. Hall Aquatic Center in Prince Frederick provides our school system swim teams a facility for training and meets. Having this facility eliminates the need to provide pools at our high schools.

All project procurements must fall within the procurement guidelines established by the IAC/PSCP, Department of General Services (DGS), Governor's Office of Small, Minority, & Women's Business Affairs, COMAR and CCPS Policy #7008 Minority Business Enterprise (MBE) and #5510 Bidding. This project development process is continuous and incorporates the principals of planning, evaluation, and revision as directed by changing community needs, adjustments in methods of instruction, or redefined educational objectives.

The Comprehensive Maintenance Plan is utilized to determine the building systems needs and physical plant upgrades. With the exception of emergency issues, the projects listed in the Maintenance Plan are coordinated with the Capital Improvement requests annually.

We continue to see an increasing number of students in need of specialized instruction. Language barriers, economic disadvantages and emotional support needs of students have begun to put a strain on existing space and staffing. Serving these students requires individualized instruction. The need for smaller spaces is causing a shift in our

thinking, related to our educational programs and facilities in the very near future. Our programmatic requirements are incorporating a larger number of smaller resource and flex type spaces, to address our students' needs.

There is continued demand in a number of our schools for the Free and Reduced Meal Program (FARMS). As of October 31, 2022, the following schools are over 35% participation: Calvert Country School, Patuxent-Appeal Elementary Campus, St. Leonard Elementary, and Southern Middle School. The total FARMS participation percentage for the district increased slightly from the previous year's figure of 22.7%, with six schools over 35%, to 24 percent, with 4 schools, over 35%. The increase in the overall rate is due in part to 3 additional schools that are between 32 and 34% FARMS participation.

### **Hearing Phase:**

Individual school and countywide student enrollment projections, school grade placement projections, overall county population projections, and other similar studies relative to the total Calvert County environment are studied to arrive at the specific group of projects that are to make up the Superintendent's recommended Capital Improvement Program.

The Superintendent's recommended Capital Improvement Program is presented to the Board of Education of Calvert County in a public session. This presentation offers citizens or groups an opportunity to comment on the merits of the plan.

The Superintendent may modify the program predicated on input from the public, after which it is submitted to the Board of Education for final approval. It is then submitted to the County Commissioners for their approval and, finally, to the Maryland Interagency Commission on School Construction.

## **STAFFING RATIOS**

- The staffing ratio for Pre-K is two to twenty.
- The staffing ratio for kindergarten is one (plus a classroom assistant) to twenty-five.
- The staffing ratio for Grades 1 through 5 is one to twenty- five.
- The staffing ratio for Grades 6 through 12 is one to twenty-one.
- The Special Education staffing plan adopted by the Board provides for a hybrid census model.
- These ratios can fluctuate due to enrollment, available staff and funding levels provided by the State and Local Governments.

## **ORGANIZATIONAL PATTERN**

The organizational pattern for the Calvert County Public Schools is structured as follows:

- Elementary Schools: Pre-K through 5
- Middle Schools: Grades 6 through 8
- High Schools: Grades 9 through 12
- Comprehensive Special Education Services are provided to individuals pre-school through age 21.

## **SCHOOL ATTENDANCE AREAS**

The Calvert County Public Schools maintains specific school attendance areas for each elementary and secondary school. Redistricting is a necessary consideration when overcrowding occurs at a particular school. When changes in school attendance areas are considered, the Superintendent and the Board of Education develop proposed changes that are presented to the public for comment and consideration prior to establishing fixed school boundaries. The following considerations are incorporated when this occurs.

- Establish boundaries that follow natural or major man-made landmarks,
- Minimize the number of students and families that may be affected by redistricting,

- Develop boundaries that support safe and reasonable school bus transportation patterns,
- Provide for racial balance at each facility, and
- Provide for anticipated growth at each affected school.

School attendance areas in Calvert County are very reliant on geographic solutions. This county is subdivided by many tributaries of the Chesapeake Bay and the Patuxent River, which do not have direct crossings. Thus, our bus routes must, in most cases, traverse to the MD Route 4 corridor in order to move in a northerly or southerly direction.

Redistricting procedures are outlined under Calvert County Public Schools Policy Statement #4400, Redistricting and School Attendance Areas.

### **PROPERTY DISPOSAL**

The Calvert County Public Schools follows the procedures outlined in Article 4, Section 44(C) of the Annotated Code when disposing of real property.

### **TRANSPORTATION**

Calvert County is rural in nature, but it has town centers with a higher concentration of homes and businesses. Most communities in the county are set back from major transportation arteries with very few sidewalks connecting residences to schools. These factors lead to some routes with low average ridership and many miles driven without students on board to bridge the distance between the neighborhoods and the schools. Therefore, all students are eligible for transportation services. We estimate a student ridership of 70 - 80% when we account for students who drive themselves and for parents who transport their students. In FY 23, at most 154 buses were used on daily routes, as were a select few approved taxis.

Typically about one hundred and ten regular route buses serve our twenty-four public schools each morning and afternoon. Approximately forty special route buses transport students to regional programs, including Calvert Country School. Special routes may include those for students with special needs who require specialized Transportation, students in programs for English Language Learning, students enrolled in Head Start, students temporarily assigned to programs for alternative education, and for transporting students

experiencing homelessness back to their school of origin. Included in those special routes are non-public special education facilities in Annandale, VA, Annapolis, Baltimore City, Deale, Ellicott City, Laurel, Millersville, and Owings Mills, as well as the Maryland School for the Blind and Maryland School for the Deaf.

Changes to regular bus routes are occasionally made throughout the school year to maintain safe ridership capacity, ensure timeliness, consistency, and efficiency. Changes to special needs routes happen much more frequently. Reasons can include student entry and withdrawal from regional programs, revisions to transportation as a related service for students with individual education plans (IEPs), and changes in the status of students experiencing homelessness. For safety, buses are equipped with a two-way radio, an audiovisual recording system, and a “live” GPS unit. The GPS system allows designated school system staff to identify the location of each bus at any time. It also allows students and their parents to use a secure app to monitor the proximity of their assigned bus to their assigned bus stops. These technology enhancements are in place for both safety and efficiency. They provide peace of mind for students, parents, and school administrators while also enhancing the school system’s capacity to evaluate the efficiency of our planned routes.

### **HUMAN RESOURCES POLICY**

The personnel policies of a school system are an essential part of the program of public education in a community. The philosophy of the school system and the community is generally reflected in these policies.

Through personnel policies, the Calvert County Public School System established conditions that attract and retain a most highly qualified and diverse staff. The reputation of the school system attracts applicants who are well qualified for professional and support positions.

Calvert County is projected to experience minimal student growth over the next planning cycle. Fiscal issues are impacting how our schools are staffed. The ever-increasing need for additional student services and support staff for itinerant and special education

will require additional space to accommodate those needs. The Human Resources Department will need to recruit specialized individuals to meet the needs of these additional student services. The Human Resources Department utilizes recruiting strategies that attract the most qualified applicants who are representative of all race and ethnic backgrounds.

Calvert County Public Schools has been able to fill most of the teaching vacancies that have occurred in the last several years. Identified critical need areas include special education teachers, speech pathologists, school psychologists, mathematics, world language and science teachers. Positions in these areas have been challenging to staff. However, through strategic recruiting strategies, professional vacancies have been kept to a minimum.

Calvert County Public Schools encourages all employees to continue to grow professionally. Calvert County Public Schools provides all staff with personalized and differentiated professional learning enabling them to grow and increase student success.

### **GENERAL EDUCATION LEARNING ENVIRONMENTS IN THE 21<sup>st</sup> CENTURY**

Calvert County Public School (CCPS) is dedicated to providing students with educational experiences consistent with educational best practices and designed to support all students in becoming college and career ready. Classrooms will model college and work place environments and as such, will avoid learning spaces with desks arranged in rows and the use of teacher-centered instructional practices. Instead, tables, chairs, and the ability to easily rearrange furniture and spaces for different functions will be available.

It is a goal of CCPS to create spaces within our secondary schools that offer “Learning Commons,” which are spaces where students and teachers can come together to collaborate on projects, communicate with their teachers and peers and work independently, and spend time creatively pursuing individualized learning opportunities and academic assignments.

CCPS high schools will strive to model the workplace students will enter by providing:

- Open space for collaboration
- Appropriate seating for students to engage in online learning using 1 to 1 devices

- Charging stations for 1 to 1 devices
- Robust wireless access for school owned devices
- The ability to configure and reconfigure shelving in the library and tables/desks in the classroom to repurpose the space for various projects
- Classroom spaces that readily support synchronous learning opportunities with other classrooms and non-contiguous locations
- Robust bandwidth to support students throughout the school

## **SPECIAL EDUCATION**

Calvert County Public School is dedicated to providing a Free Appropriate Public Education (FAPE) to children and youth with disabilities ages birth to 21. These services include effective classroom instruction, specially designed instruction, supplemental aids and supports, and related services as necessary.

Calvert County Public Schools continues to provide a full continuum of services to students with special needs including: services in general education with collaborative and co-teaching relationships; resource and pull-out programs; as well as regional programs and a public separate day school to address the needs of low-incident populations. Special Education PreK, Special Education Primary, Behavior Development Program (BDP), Structured Learning Environment (SLE), Intensive Structured Learning Environment (ISLE) and Learning for Independence (LFI) are the programs serving these populations.

The focus of our school system to prepare each student to become productive citizens in the 21<sup>st</sup> century through rigorous and relevant curriculum and instruction requires professional development for general and special educators. A primary goal of CCPS is to narrow achievement gaps for students with disabilities through specially designed instruction. Universal design for learning, implementation of evidence-based instructional practices and the increased effective use of technology in classrooms will enhance the opportunities for learning for all students. Building positive school cultures and relationships among students, staff, and the community is an essential component of success and achievement.

The maintenance and/or expansion of instructional programs for students with disabilities will continue to have an impact on facility needs in the future. Classroom space

must be considered along with space for planning teams, staff development, sharing of content and strategies, and related services. Adequate space is needed for students with functional, physical, sensory, vocational training and/or behavioral needs that allow for flexible grouping, quiet/de-escalation and academic differentiation.

### **CAREER AND TECHNOLOGY ACADEMY**

Calvert County Public Schools offers a broad array of Career and Technical Education (CTE) programs to its students – 25 programs in all. Of these programs, thirteen are offered at our shared time center, the Career and Technology Academy (CTA) and one program will be relocated to CTA from Calvert High School beginning in SY23-24. Students from all four of our high schools who are interested in pursuing a career in one of these programs attend the CTA for half of their day during 11<sup>th</sup> and 12<sup>th</sup> grades. An additional eleven programs are taught at the home high schools (with one moving, this number will be ten for the 2023-24 School Year). A registered youth apprenticeship program started in SY21-22 and teaches students through related technical instruction delivered at either home high schools or CTA and requires 450 hours of on-the-job training in a registered youth apprenticeship environment through local business partners.

The programs offered at the Career and Technology Academy are focused on preparing students for the world of work and post-secondary education. As an integral part of our secondary curriculum, students from all of our high schools can opt to attend the center. In fact, over 475 students have requested courses for the 2023-2024 school year. Current space, however, will allow approximately 360 of these students to enroll in programs at CTA.

Working closely with the business community through our local advisory and program advisory committees, all the technical and craft areas are continually reviewed and updated. This continual communication and the requirement of the Maryland Department of Education to stay current form the basis for the creation of new courses and the modification of others. Our fastest growing and most consistently oversubscribed programs align to areas most in need in our local workforce including Academy of Health Professions,

CISCO Networking & Cybersecurity, and several areas in the Construction Trades, such as Electricity, Welding, and HVAC/Plumbing. An additional area of program growth is the Fire & Rescue/EMT Cadet program, which is possible thanks to a partnership with our local fire departments and Calvert County Public Safety. Enrollment for this program has reached capacity for both the 2022-23 and for the upcoming 2023-24 school years.

A program in the field of Agriculture and Environmental Science, Curriculum for Agricultural Science Education (CASE), has been located at Calvert High School, with students transferring to CHS full-time to enroll in the program. Beginning in the 2023-24 School Year, the program will be relocated to CTA. This will allow greater access to students from the Northern, Huntingtown, and Patuxent high school attendance zones. This program includes four courses; a science lab space which is outfitted with computer technology to allow the students to conduct research on the internet will house the program at CTA. For the 2023-24 School Year, 18 students have registered for the newly located program. The 28 underclassmen students currently enrolled in CASE at CHS will be able to complete the program at CTA as well.

Students also have the opportunity to participate in internships and a cooperative work experience in their chosen field of study. Local businesses make these positions available and provide feedback to the supervising teachers regarding each student's performance and their preparation at the Career and Technology Academy. The success of this effort is reflected in a placement rate of 89.8% of our graduating seniors in their chosen career and/or college.

Besides the programs which we offer at the Career and Technology Academy, we have several CTE programs which are housed at the regular high schools.

- Within the Business Management and Finance (BMF) cluster, we have three programs of study. We currently have over 200 students enrolled in these programs. These courses are taught in computer labs and regular classrooms.
- In the Human Resource Services (HRS) cluster we have two programs. We have over 400 students in Criminal Justice. Courses in this program are taught in the regular

classroom with frequent visits by law enforcement officers. In addition, students have the opportunity to participate in “ride-along” experiences with local law enforcement officers. The school system recently added a Dual Enrollment credit option for students in the Criminal Justice courses with the College of Southern Maryland. In addition to Criminal Justice, the Teacher Academy of Maryland (TAM) program offers a four-course sequence articulated with 12 different colleges and universities in Maryland where students can earn college credits toward the completion of a teaching degree. Students in the TAM program complete an internship at an elementary or middle school during the capstone course in the program.

- We offer two Project Lead the Way (PLTW) programs at all four of our high schools: PLTW Biomedical Science and PLTW Pre-Engineering. Enrollment in both programs has consistently increased over the previous four years. This year, over 100 students are expected to complete the Biomedical program and approximately 75 students are expected to complete the Engineering pathway. Computer labs, biology labs and general classroom spaces are used to deliver this specialized instruction.
- In the Information Technology (IT) career cluster, there has been tremendous growth in the Computer Science pathway. The first 22 students to complete the program graduated in 2020. This year, there are over 40 students eligible to complete the pathway. These courses are implemented in computer labs.
- In the 2020-21 School Year, MSDE approved the existing Naval Sciences JROTC program as a CTE pathway. The program existed for many years in all four high schools; however, students now receive credit for CTE completion by taking NJROTC Levels I, II, and III. These courses are taught in specialized classrooms for the program. Currently, over 350 students are enrolled in NJROTC courses in the four high schools with approximately 95 students expected to complete the pathway through the third course level this year.

## **SCHOOL SITE ANALYSIS – CALVERT SOUTHERN REGION**

### ***DOWELL ELEMENTARY, PATUXENT-APPEAL ELEMENTARY CAMPUS, ST. LEONARD ELEMENTARY, MUTUAL ELEMENTARY, SOUTHERN MIDDLE, MILL CREEK MIDDLE, AND PATUXENT HIGH SCHOOLS***

This group of schools collectively serves the southern region of Calvert, or what might be considered, but is not limited to, the first election district of the county.

The Patuxent-Appeal Elementary Campus is situated within the Lusby Town Center and St. Leonard Elementary is located adjacent to the St. Leonard Town Center. The change to extend the town center to St. Leonard Elementary has been proposed in the updated St. Leonard Town Center Master Plan but the updated zoning map has not yet been adopted. Dowell Elementary, Mill Creek Middle and Patuxent High School are situated between the Lusby and Solomons Town Centers. The separation between these two town centers is approximately one mile. Southern Middle School is three miles to the north of the Lusby Town Center while Mutual Elementary School is approximately three miles to the west of the St. Leonard Town Center.

This region is very well master planned for the future in terms of tourism, residential growth areas, business development and its proximity to the Patuxent Naval Air Station, St. Mary's Technology corridor, the Patuxent Business Park, the Calvert Cliffs Nuclear Power facility and the Dominion Liquid Natural Gas Facility.

The County Adequate Public Facility Report for Spring of 2023 reveals that none of the school geographical attendance areas of this region are closed for the recording of new residential subdivision development and all schools are well below the ordinance threshold. Of the three regions discussed in this report, the southern region is least likely to see a major increase in population growth over the next five years. Up until recently, there have been no new major housing subdivisions proposed. The Chesapeake Ranch Estates, situated to the south and east of the Lusby Town Center, is the only major subdivision with an inventory of developable lots on record. With the potential for a new multi-family subdivision in the Lusby Town Center, currently in the preliminary phase, enrollment trends in this region of the county may increase in a few years.

The schools referenced above are well positioned both geographically and in enrollment capacity for any growth that will occur over the next five planning cycles. This statement excludes consideration related to full day Pre-Kindergarten, as required by the Blueprint for Maryland's Future. There are no plans for major expansions and or renovations/revitalizations for these schools. Only systemic projects are in the future Capital Improvements Program requests. The schools in this region are in the adequate to good facility maintenance category. We have changed the Administrative/ Management approach for the Patuxent-Appeal Elementary School Campus (PAC) by utilizing one Principal to oversee both schools. Both schools are presently considered as a single facility with MSDE but remain as separate facilities for PSCP purposes. Prior to the start of the 2017-2018 school year, a realignment of grade levels across the 2 buildings was conducted. Beforehand, the Patuxent Elementary Building housed grades Pre-K-2 and Appeal Elementary was the location for grades 3 - 5. The separation that the 2 buildings created between grades 2 and 3, led to a lack of continuity, consistency, and community. The realignment shifted Pre-K, K, and the Judy Center to the Appeal building and consolidated grades 1 through 5 within the Patuxent building.

Enrollment within the southern part of Calvert County largely continues to experience a lower student enrollment than the northern region of the county. Planning suggests revisiting the possibility of adjusting school attendance areas, to take advantage of available seats at the elementary and middle school levels. However, this will require further exploration of potential students generated through the multi-family subdivision, preliminarily planned in the Lusby region.

### **SCHOOL SITE ANALYSIS - CALVERT CENTRAL REGION**

#### ***BARSTOW ELEMENTARY, CALVERT ELEMENTARY, HUNTINGTOWN ELEMENTARY, PLUM POINT ELEMENTARY, CALVERT MIDDLE, PLUM POINT MIDDLE, CALVERT HIGH SCHOOL, AND HUNTINGTOWN HIGH SCHOOLS***

This group of schools collectively serves the central region of Calvert, or what might also be considered, but is not limited to, the second election district of the county. Barstow Elementary, Calvert Elementary, Calvert Middle and Calvert High schools are

located within or within one-third of a mile of the Prince Frederick Town Center.

Huntingtown Elementary School is one-third mile from the Huntingtown Town Center, and Huntingtown High School borders the Huntingtown Town Center. The Plum Point Elementary and Middle School campus is situated between the Prince Frederick and Huntingtown Town Centers and the Town of Chesapeake Beach.

This region is more spread out than the southern region, both geographically and in relative distance between town centers. This region is home to the County Governmental Center and Courthouse. The road network leads west on the Route 231 corridor to the Calvert County Industrial Park and Charles County and the Route 2/4 corridor to the employment centers of Washington, D.C. to the north and the Patuxent Naval Air Station to the south. The commercial and retail base in this region has shown slight growth over the previous four years. Phase II improvements of MD 2/4 in the Prince Frederick Town Center have been completed. The county has requested state funding for the design, engineering, and construction for Phase III improvements, which would widen MD 2/4 from four to six lanes from Fox Run north to Stoakley Road.

Due to the COVID-19 pandemic, Calvert County's schools saw an overall decline in enrollment in the 2020/21 school year. The 2022/2023 school year has seen enrollment increase from the previous year, however current overall enrollment remains slightly lower than pre-pandemic times. As a result, similar to 2022, the County Adequate Public Facility Report for the Spring of 2023, indicates that none of the school geographical attendance areas of this region, are over capacity. However, due to a slight recovery in enrollments, two elementary schools within this region; Barstow Elementary and Plum Point Elementary are approaching the ordinance threshold at 91.8% and 94.1%, respectively. With the continuation of new housing stock, enrollment is expected to increase within this region. There is one large 249-unit apartment complex that is now complete and occupied within the Prince Frederick Town Center. There are two other major high-density subdivisions currently under development in the Prince Frederick Town Center, yielding a mix of single-family homes, townhouses and apartments.

The schools within the Prince Frederick Town Center are fairly well positioned for the future projected growth of this region for the next five years. All of the schools in this

region are in adequate to superior standing in the facility maintenance category. The FY2024 Capital Improvements Program does include a feasibility study in a future funding cycle to determine the optimal approach for potential renovation or replacement of 2 facilities: Calvert Elementary School and Calvert Country School.

Huntingtown High School and Huntingtown Elementary School are not over enrolled at this time. Recently, a project to address onsite bus and traffic issues at Huntingtown Elementary School was completed. Additionally, some HVAC equipment was also replaced via a partial systemic project.

The Plum Point Elementary and Middle school campuses, by virtue of their location between the Prince Frederick Town Center, the Huntingtown Town Center and Chesapeake Beach, are impacted by numerous development projects. The most compelling concern is the continued growth within the Town of Chesapeake Beach. Chesapeake Beach is an incorporated municipality within Calvert County and is not subject to the County adequate public facility regulations. Continued residential development in the Town of Chesapeake Beach will not only impact Beach Elementary School situated in the town, but Plum Point Elementary, Plum Point Middle, and Huntingtown High School within the central region depending on present and future school geographical attendance areas.

As stated earlier, none of the school geographic attendance areas within this region are closed for the recording of residential subdivision development, however, the County Adequate Public Facility Report from Spring 2020 indicated that Plum Point Elementary was over capacity, at the time. Eight years ago, the Board of Education adjusted the geographical attendance area of Plum Point Elementary School to receive a portion of the Beach Elementary School attendance area to alleviate the over enrollment issue. Planning suggests a need to visit the possibility of adjusting the school attendance areas, in particular, at the elementary and high school levels, to alleviate the student population issues evident in the northern region of the county.

Based on the revised State maintenance inspection rubric, all the schools are in adequate to superior condition. Aside from systemic type projects, as noted previously, a feasibility study in the future will examine potential renovation or replacement of 2

facilities within this region. Lastly, however, as a result of the Blueprint legislation, full day Pre-K may have construction impacts to the elementary schools, that will need to be considered.

### **SCHOOL SITE ANALYSIS – CALVERT NORTHERN REGION**

#### ***BEACH ELEMENTARY, MT. HARMONY ELEMENTARY, SUNDERLAND ELEMENTARY, WINDY HILL ELEMENTARY, NORTHERN MIDDLE, WINDY HILL MIDDLE, AND NORTHERN HIGH SCHOOLS***

This group of schools collectively serves the north region of Calvert, or what also might be considered, but is not limited to, the third election district of the county. Only Beach Elementary School is situated within a Priority Funding Area which is the Town of Chesapeake Beach. The Northern Middle and High School campuses serve the Town Centers of Dunkirk, Owings and the Towns of Chesapeake Beach and North Beach. The Dunkirk and Owings Town Centers and the Towns of Chesapeake Beach and North Beach are the four main development zones in the area. Although the Towns of Chesapeake Beach and North Beach are adjacent to one another, the relative lack of proximity to the Dunkirk and Owings Town Centers allows for various areas of development throughout this region. This accounts for the placement of the remaining schools outside of the town centers.

As stated above, this area is considerably more spread out in comparison to the southern and central regions. It is also the more desirable region for growth due to its proximity to the Annapolis, Baltimore and Washington employment centers. With the exception of Chesapeake Beach, growth in this area has been somewhat kept in check by the lack of public utilities. Commercial/retail development has been slowly added to the Dunkirk Town Center which adds to the attractiveness of the area.

The County Adequate Public Facility Report for Spring 2023 has revealed that Mt. Harmony Elementary School is currently the only school in the region that is above capacity, at 102.3%. As a result, the geographical region is closed for final recordation of new residential developments. Northern Middle School and Northern High School, at 93.8% and 99.6%, are both approaching the ordinance threshold. With completion of the

Northern High School project in August 2020, and the future Northern Middle School project, currently in planning, for replacement, starting in FY2025, strains to capacity are being addressed through future projects. However, due to the attractiveness of the Northern Calvert region to development, adjustments to school boundaries may need to be examined.

The other remaining middle school in the north, Windy Hill Middle at 89.6%, is slightly below the ordinance threshold. At the elementary level, Sunderland Elementary at 81.7% and Windy Hill Elementary at 82.6%, are also below the ordinance threshold. Beach Elementary at 94.1% is approaching the ordinance threshold however completion of the new Beach Elementary School in late 2023 will help address future capacity issues. Beyond the present Capital Improvement Program forecast, improvements to Mt. Harmony Elementary will be evaluated. A future needs assessment will indicate the scope of this request.

The remaining schools in this region have been rated as adequate to good condition within the facility maintenance category, with only systemic needs outlined in the CIP. All of the elementary schools in this area will require re-evaluation due to the Blueprint implementation of full day Pre-K to the public-school arena.

Eight years ago, the Board of Education adjusted the geographical attendance areas of Beach Elementary School and Windy Hill Elementary School to alleviate the Beach Elementary School enrollment issue. Beach Elementary School will likely return to becoming over capacity. The Town of Chesapeake Beach is not subject to the county's adequate public facilities regulations and has not adopted its own, thus increased residential development within the town may impact the school's capacity. Continued residential development in the Town of Chesapeake Beach will impact not only Beach Elementary School but Sunderland Elementary School, Windy Hill Elementary School, Northern Middle School, Windy Hill Middle School and Northern High School within the northern region depending on the present and future school geographical attendance areas. The northern part of Calvert County is experiencing a higher student enrollment than the southern part of the county. Planning suggests considering the possibility of

adjusting school attendance areas, to provide relief for this part of the county by taking advantage of available capacity in the southern schools.

### **CALVERT REGIONAL FACILITIES**

#### ***CAREER AND TECHNOLOGY ACADEMY, CALVERT COUNTRY SCHOOL AND HUNTING CREEK ANNEX AT CALVERT COUNTRY SCHOOL***

This group of schools serves in different capacities to provide more focused instruction which can be better delivered in regional facilities. One is located in a town center and the other two facilities are town center adjacent.

The Career and Technology Academy situated in the Prince Frederick Town Center provides a venue for the delivery of Career Technology Education for all four of our high schools. The facility houses introductory through advanced levels of instruction in the technical trades, automotive trades, construction trades, computer trades, media, cosmetic, engineering, health and culinary disciplines. The Career and Technology Academy has a minor impact on the county Adequate Public Facility Report. It is in good condition.

The Calvert Country School is situated just outside of the Prince Frederick Town Center area. It provides comprehensive services for our severely and profoundly disabled school age residents as well as those with emotional issues from PreK to 21 years of age. Some of our less disabled students are provided services within their home schools. The Country School does not affect the county Adequate Public Facility Report. The facility is in adequate condition, based on the State's revised maintenance inspection requirements.

The Hunting Creek Annex (HCA) was located within a facility situated in the Huntingtown Town Center. This facility built in 1944, had an addition completed in 1960. Costs of maintenance and underutilization over the last few years, provided an opportunity for Calvert County Public Schools to re-evaluate keeping this facility. In May 2017, the Calvert County Board of Education approved the relocation of programs housed within HCA to a wing located within the Calvert Country School building. The designated area within Calvert Country School was remodeled in early 2018 and the programs housed within the Hunting Creek Annex were relocated in May 2018. The

renovated wing houses various special education staff who engage in comprehensive assessment testing of young children and provide parent consultations. HCA was reverted back to Calvert County Government in 2019. The following programs are now located in the Calvert Country School building:

- ∞ Child Find: provides screening, assessment and development of IEPs for children ages 3 – 5 which are conducted at Calvert Country School in the Child Find office. Students who qualify for services receive them at their home school, childcare or regional program as identified on the IEP.
- ∞ Infants and Toddlers Program (ITP): serves children from birth to four with developmental delays and/or disabilities. Children may be evaluated at Calvert Country School through the ITP program, but they usually receive services at home or at a childcare facility. Some service is provided at Calvert Country School to include a structured intervention program for two-year-olds and parent training and various IFSP meetings are held on site. Occasionally, special events for children are offered in the building.
- ∞ Parent Connections: provides support and education for parents of special needs children. Several times a year this program offers a play group in the building for parents and children as well as trainings. The Parent Connections office houses a lending library for families to access which is located at Calvert Country School.

## **CCPS VIRTUAL ACADEMY**

As a result of the COVID-19 Pandemic, during the 2021 – 2022 school year, Calvert County designed a Virtual Academy program for students in grades 3-8 and collaborated with the Eastern Shore Consortium to provide a virtual learning experience for students in grades 9-12. The academy models the use of synchronous and asynchronous instruction.

For the 2022-23 school year, Calvert County Public Schools continued a virtual academy program for grades 3 – 8. With declining enrollment, CCPS reduced the number of grade level classes in grade 5 and collapsed the related arts classes within the current staffing of the middle school content area teachers. The virtual academy program has the capacity of up to 25 students per grade level.

Due to the continued decrease in applications and enrollment numbers, it has been determined that CCPS will no longer offer the Virtual Academy program beyond the 2022 – 2023 school year. Students will return to their zoned schools for the 2023 – 2024 school year. The teachers and parents were notified the week of April 10, 2023.

## **BIRTH RATES**

The 2020 data from the Maryland Department of Health Vital Statistics Administration was released post issuance of this report and shows a continuation of prior year trends. Birth and death rates increased approximately at the same rate, thereby maintaining the previous year's ratio of births to deaths. As of the current date, the 2021 data has not been published. (See *Table II*)

**TABLE II**

*Number of Resident Births and Deaths  
Calvert County, Maryland  
2011 – 2021*

YEAR	NUMBER OF LIVE BIRTHS*	NUMBER OF DEATHS	RATIO: BIRTHS TO DEATHS
2011	956 + 6.0%	627 + 8.5%	1.52
2012	913 – 4.4%	616 – 1.7%	1.48
2013	912 – 0.0%	642 – 4.0%	1.42
2014	904 – 0.8%	637 – 0.7%	1.42
2015	925 + 2.3%	656 + 2.9%	1.41
2016	907 – 1.9%	720 + 9.8%	1.26
2017	900 – 0.8%	723 + 0.4%	1.24
2018	883 – 1.9%	676 – 6.5%	1.30
2019	896 + 1.5%	780 +15.4%	1.15
2020	943 + 5.2%	820 +5.1%	1.15
2021	Not Available	Not Available	Not Available

\* Source: Maryland Department of Health Vital Statistics Administration

NOTE: Plus or minus (+/-) denotes change from previous year.

## **INSTRUCTIONAL PLAN SUPPORT DATA**

The inventory of resources and services available within the community to support the instructional plan is referred to as support data. It includes the health, transportation, cultural services, and other auxiliary services which could augment the school program.

Contained within the Appendix are maps which indicate the basic support data. Appendix A illustrates the general locale of Calvert County. Appendix B indicates the election districts in the county. Appendix C depicts current public facilities in the county

which augment and support the public school system. Appendix D and Appendix E illustrate the Calvert County Water and Sewerage Plans. Appendix F-1 shows Calvert County's designated Priority Funded Areas and Priority Preservation Areas as of 2018, and F-2 is the Future Land Use Map, which shows the county's existing road network (Calvert County Comprehensive Plan, adopted 2019). Appendix G illustrates our elementary school boundaries, Appendix H illustrates our middle school boundaries and Appendix I illustrates our high school boundaries. Appendix J illustrates the Calvert County Public Schools existing feeder plan.

### **PUBLIC AND PRIVATE SCHOOL ENROLLMENT**

Public and private school enrollments are reported in the following *Table III*. The combined enrollment for the non-public schools represents 4% of the total school enrollment in Calvert County. This remains in the same range as last year. The public schools enrollment stands at 96%. The Calvert County Public Schools Pre-Kindergarten program is limited to those students falling into various socioeconomic indicators and the program is not offered at all of our elementary schools. Thus, only a portion of all three and four-year old children in the county attend a public-school Pre-Kindergarten or special Pre-Kindergarten program. There are seven (7) non-public, church, nursery or early childhood establishments which report 86 pre-kindergarten four-year-olds. These same establishments report a total of 79 enrolled three-year-olds, however it is unknown whether these are half day programs or full day. Additionally, it is not possible to determine which of these children would be eligible to attend a Calvert County Public Schools program and whether the private school program being offered is in fact a pre-kindergarten curriculum. That said, we do not provide a Pre-Kindergarten comparison in *Table III*.

It is worth noting that as Calvert County transitions to implement the full day Pre-Kindergarten requirement outlined within the Blueprint for Maryland's Future, there may be eligible private providers that opt to offer full day pre-kindergarten to eligible three and four year old students. Due to the very specific requirements in the Blueprint, a more apt

comparison may be possible between the publicly and privately offered pre-K program, in the future.

**TABLE III**  
***Public and Private School Enrollment for Calvert County 2018 - 2022***

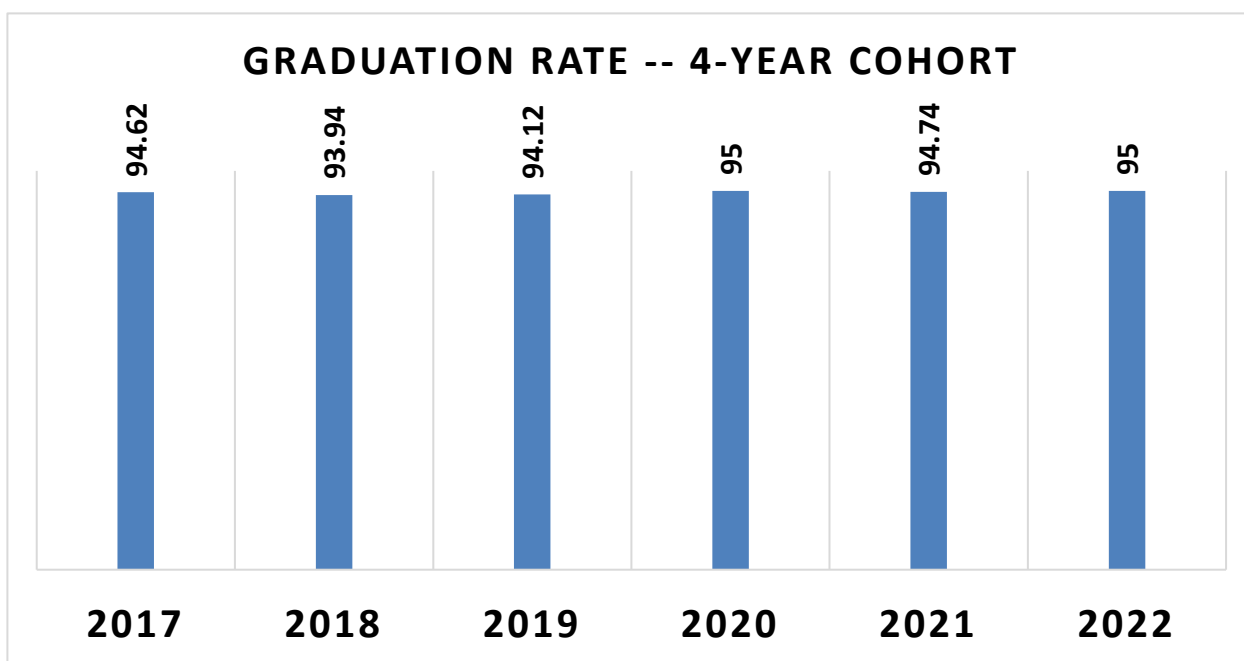
Years	Grades	Calverton School (Private)	Our Lady Star of the Sea (Parochial)	Cardinal Hickey Academy (Parochial)	Tidewater School (Private)	The Wesley School (Private)	Total Private & Parochial	Calvert County Public Schools	% Public Schools Enrollment Total
2018	Pre-K	0	0	0	0		0	448*	0
2019	K	14	10	9	10		43	1069	96%
	1-5	60	55	90	17		222	5573	96%
	6-8	50	32	57	0		139	3720	96%
	9-12	<u>135</u>	<u>0</u>	<u>0</u>	<u>0</u>		<u>135</u>	<u>5134</u>	<u>97%</u>
<b>TOTAL</b>		<b>259</b>	<b>97</b>	<b>156</b>	<b>27</b>		<b>539</b>	<b>15,496</b>	<b>97%</b>
2019	Pre-K	0	0	0	0	0	0	435*	0
2020	K	15	10	18	11	6	60	1077	95%
	1-5	57	54	62	14	0	187	5633	97%
	6-8	53	29	47	0	0	129	3746	97%
	9-12	<u>115</u>	<u>0</u>	<u>0</u>	<u>0</u>	<u>0</u>	<u>115</u>	<u>5141</u>	<u>98%</u>
<b>TOTAL</b>		<b>240</b>	<b>93</b>	<b>127</b>	<b>25</b>	<b>6</b>	<b>491</b>	<b>15,597</b>	<b>97%</b>
2020	Pre-K	0	0	0	0	0	0	340*	0
2021	K	15	19	15	9	10	68	943	93%
	1-5	63	76	77	24	14	254	5255	95%
	6-8	57	30	40	0	0	127	3639	97%
	9-12	<u>109</u>	<u>0</u>	<u>0</u>	<u>0</u>	<u>0</u>	<u>109</u>	<u>5115</u>	<u>98%</u>
<b>TOTAL</b>		<b>244</b>	<b>125</b>	<b>132</b>	<b>33</b>	<b>24</b>	<b>558</b>	<b>14,952</b>	<b>96%</b>
2021	Pre-K	0	0	0	0	0	0	382*	0
2022	K	26	30	16	12	10	94	983	91%
	1-5	90	95	90	27	20	322	5415	94%
	6-8	65	41	49	3	0	158	3558	96%
	9-12	<u>97</u>	<u>0</u>	<u>0</u>	<u>0</u>	<u>0</u>	<u>97</u>	<u>5077</u>	<u>98%</u>
<b>TOTAL</b>		<b>278</b>	<b>166</b>	<b>155</b>	<b>42</b>	<b>30</b>	<b>671</b>	<b>15,033</b>	<b>96%</b>
2022	Pre-K	0	0	0	0	0	0	414*	0
2023	K	27	20	14	5	8	74	1043	93%
	1-5	99	101	95	32	14	341	5410	94%
	6-8	66	41	51	2	0	160	3545	96%
	9-12	<u>83</u>	<u>0</u>	<u>0</u>	<u>0</u>	<u>0</u>	<u>83</u>	<u>5049</u>	<u>98%</u>
<b>TOTAL</b>		<b>275</b>	<b>162</b>	<b>160</b>	<b>39</b>	<b>22</b>	<b>658</b>	<b>15,047</b>	<b>96%</b>

\*Not part of total

## **GRADUATION RATE OF CALVERT COUNTY HIGH SCHOOLS**

Calvert County Public Schools consistently maintains a high graduation rate that increased to  $\geq 95\%$  in 2022. Calvert's mission – to produce graduates who are responsible citizens with career and educational choices in the 21st century – prioritizes giving students the high-quality instruction and support they need to graduate and move on to careers or post-secondary education. *(Note: graduation rates and other metrics at or above 95% are suppressed to maintain student privacy.)*

**TABLE IV**

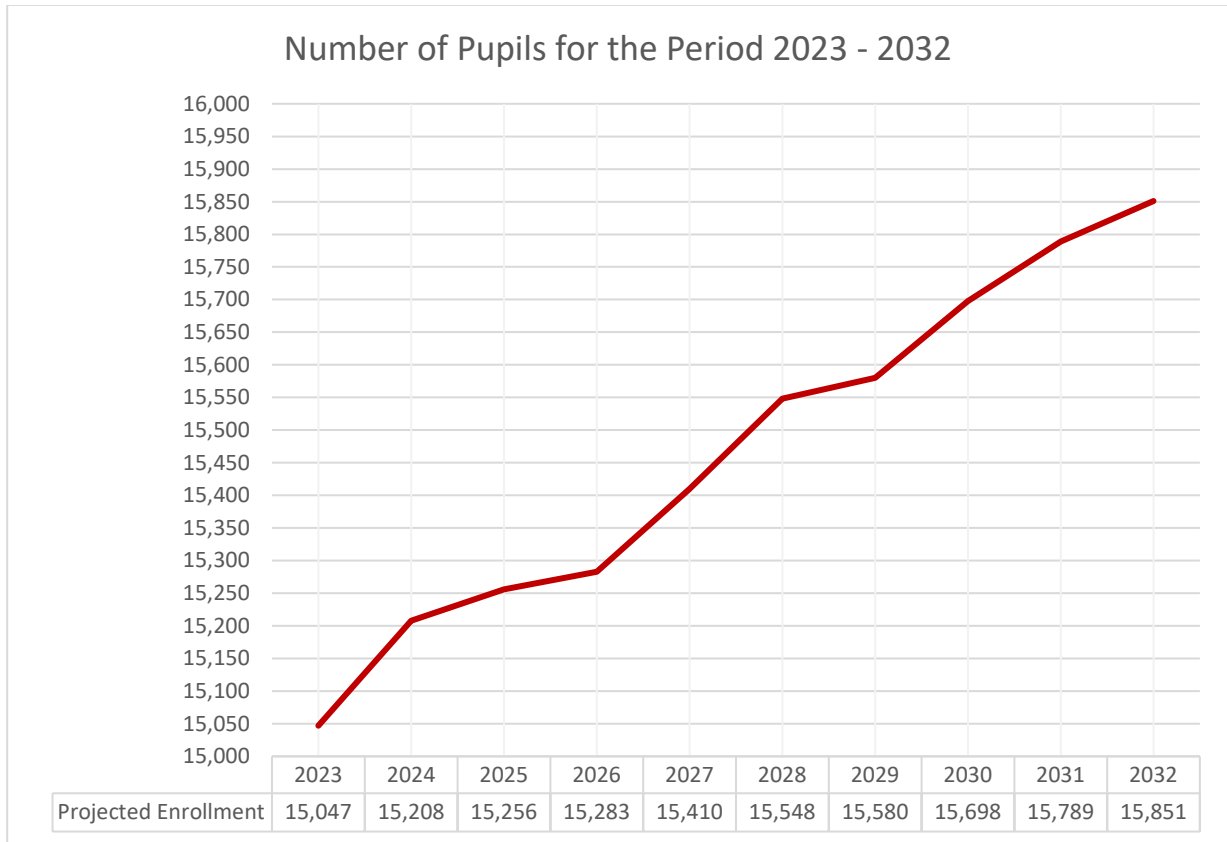


## **ENROLLMENT PROJECTIONS**

The impact due to the COVID-19 pandemic continues to affect Calvert County Public Schools enrollment during the 2022/2023 school year. Calvert's enrollments are still well below pre-pandemic levels, when total FTE enrollment was 15,597 students. While the elementary student enrollment has recovered slightly, the middle school and high school enrollments continue to lag behind the 2020/21 school year and continue their downward trend. Many families continued to home school their students, rather than enrolling them into the public school system. However, applications for students on parental instruction saw a decrease in September 2022, compared to previous years. In September 2022, there were a total of 984 applications, compared to 2021, with 1,308 applications, and September 2020 with 1,133 applications.

Based on the decreasing trends in home-based instruction, the relatively flat private school enrollment at the K - 5 levels, as well as development information, our enrollment projections for the 2023 - 2032 school years, continue to show a similar pattern of growth from the previous year. Pages 46 through 70 present the actual and estimated enrollments of years 2022 through 2032. *TABLE V*, located on the following page, presents graphically the estimated enrollment of Calvert County Public Schools in the years noted.

**TABLE V**  
*Number of Pupils for the Period 2023-2032*



## FTE ENROLLMENT PROJECTIONS BY GRADE

LEA CALVERT DATE 29-APRIL-23

School BARSTOW ELEMENTARY SCHOOL

Enrollments as of September 30TH									
	2022 Actual	2023 Year 1	2024 Year 2	2025 Year 3	2026 Year 4	2027 Year 5	2028 Year 6	2029 Year 7	2032 Year 10
PRE-K									
KINDERGARTEN	100	95	105	107	107	106	106	106	105
1st	99	103	98	106	108	108	107	107	106
2nd	105	105	110	102	110	112	112	111	111
3rd	115	110	110	113	105	113	116	116	115
4th	110	121	116	114	117	109	117	120	119
5th	95	114	126	119	117	119	112	120	122
6th									
7th									
8th									
9th									
10th									
11th									
12th									
SP ED									
TOTAL	624	648	665	661	664	667	670	680	678

IAC/PSCP FORM 101.2  
R3/11

## FTE ENROLLMENT PROJECTIONS BY GRADE

LEA CALVERT DATE 29-APRIL-23

School BEACH ELEMENTARY SCHOOL

Enrollments as of September 30TH									
	2022 Actual	2023 Year 1	2024 Year 2	2025 Year 3	2026 Year 4	2027 Year 5	2028 Year 6	2029 Year 7	2032 Year 10
PRE_K									
KINDERGARTEN	83	79	87	86	86	85	85	85	85
1st	84	85	80	88	87	87	86	86	86
2nd	60	88	88	83	92	90	90	89	89
3rd	77	62	90	90	86	95	93	93	92
4th	86	80	64	94	93	89	98	96	95
5th	84	89	82	65	96	95	91	100	97
6th									
7th									
8th									
9th									
10th									
11th									
12th									
SP ED									
TOTAL	474	483	491	506	540	541	543	549	544

IAC/PSCP FORM 101.2  
R3/11

## FTE ENROLLMENT PROJECTIONS BY GRADE

LEA

CALVERT

DATE

29-APRIL-23

School

CALVERT ELEMENTARY SCHOOL

Enrollments as of September 30TH									
	2022 Actual	2023 Year 1	2024 Year 2	2025 Year 3	2026 Year 4	2027 Year 5	2028 Year 6	2029 Year 7	2032 Year 10
PRE_K									
KINDERGARTEN	69	65	71	71	71	70	70	70	69
1st	70	69	66	72	72	72	71	71	70
2nd	90	73	72	69	75	75	75	74	74
3rd	80	93	75	74	71	77	77	77	76
4th	75	83	96	78	77	74	80	80	79
5th	82	76	85	99	80	79	76	82	81
6th									
7th									
8th									
9th									
10th									
11th									
12th									
SP ED									
TOTAL	466	459	465	463	446	447	449	454	449

77IAC/PSCP FORM 101.2

82R3/11

## FTE ENROLLMENT PROJECTIONS BY GRADE

LEA CALVERT DATE 29-APRIL-23

School DOWELL ELEMENTARY SCHOOL

Enrollments as of September 30TH									
	2022 Actual	2023 Year 1	2024 Year 2	2025 Year 3	2026 Year 4	2027 Year 5	2028 Year 6	2029 Year 7	2032 Year 10
PRE_K									
KINDERGARTEN	94	89	97	96	96	96	96	96	95
1st	91	95	90	98	97	97	97	97	96
2nd	92	94	99	94	102	101	101	101	101
3rd	100	95	97	102	97	105	104	104	104
4th	94	104	99	100	106	101	109	108	108
5th	95	96	107	101	103	109	103	112	111
6th									
7th									
8th									
9th									
10th									
11th									
12th									
SP ED									
TOTAL	566	573	589	591	601	609	610	618	615

IAC/PSCP FORM 101.2  
R3/11

## FTE ENROLLMENT PROJECTIONS BY GRADE

LEA CALVERT DATE 29-APRIL-23

School HUNTINGTOWN ELEMENTARY SCHOOL

Enrollments as of September 30TH									
	2022 Actual	2023 Year 1	2024 Year 2	2025 Year 3	2026 Year 4	2027 Year 5	2028 Year 6	2029 Year 7	2032 Year 10
PRE_K									
KINDERGARTEN	78	74	81	82	83	82	82	82	82
1st	68	78	77	83	83	84	83	83	83
2nd	76	70	83	81	86	86	87	86	86
3rd	80	78	73	87	84	89	89	90	89
4th	84	82	82	76	89	87	92	92	92
5th	106	86	85	85	78	91	89	94	94
6th									
7th									
8th									
9th									
10th									
11th									
12th									
SP ED									
TOTAL	492	468	481	494	503	519	522	527	526

IAC/PSCP FORM 101.2  
R3/11

## FTE ENROLLMENT PROJECTIONS BY GRADE

LEA CALVERT DATE 29-APRIL-23

School MT. HARMONY ELEMENTARY SCHOOL

Enrollments as of September 30TH									
	2022 Actual	2023 Year 1	2024 Year 2	2025 Year 3	2026 Year 4	2027 Year 5	2028 Year 6	2029 Year 7	2032 Year 10
PRE_K									
KINDERGARTEN	96	91	99	98	98	98	98	98	97
1st	102	97	92	100	99	99	99	99	98
2nd	93	106	100	96	104	103	103	103	103
3rd	101	96	109	103	99	107	106	106	106
4th	112	104	99	112	106	103	111	110	110
5th	105	114	106	101	114	108	105	114	113
6th									
7th									
8th									
9th									
10th									
11th									
12th									
SP ED									
TOTAL	609	608	605	610	620	618	622	630	627

IAC/PSCP FORM 101.2  
R3/11

## FTE ENROLLMENT PROJECTIONS BY GRADE

LEA CALVERT DATE 29-APRIL-23

School MUTUAL ELEMENTARY SCHOOL

Enrollments as of September 30TH									
	2022 Actual	2023 Year 1	2024 Year 2	2025 Year 3	2026 Year 4	2027 Year 5	2028 Year 6	2029 Year 7	2032 Year 10
PRE_K									
KINDERGARTEN	65	62	67	67	67	66	66	66	65
1st	54	66	63	68	68	68	67	67	66
2nd	63	56	69	66	71	71	71	70	70
3rd	62	64	57	71	68	73	73	73	72
4th	73	64	67	59	74	70	76	76	75
5th	50	74	65	68	60	76	72	78	77
6th									
7th									
8th									
9th									
10th									
11th									
12th									
SP ED									
TOTAL	367	386	388	399	408	424	425	430	425

IAC/PSCP FORM 101.2  
R3/11

## FTE ENROLLMENT PROJECTIONS BY GRADE

LEA CALVERT DATE 29-APRIL-23

School PATUXENT APPEAL ELEMENTARY SCHOOL

Enrollments as of September 30TH									
	2022 Actual	2023 Year 1	2024 Year 2	2025 Year 3	2026 Year 4	2027 Year 5	2028 Year 6	2029 Year 7	2032 Year 10
PRE_K									
KINDERGARTEN	100	95	104	103	103	102	102	102	101
1st	93	102	96	105	104	104	103	103	102
2nd	93	96	106	100	109	108	108	107	107
3rd	105	96	99	109	103	112	111	111	110
4th	119	108	100	102	113	107	116	115	114
5th	101	121	111	102	105	115	110	119	117
6th									
7th									
8th									
9th									
10th									
11th									
12th									
SP ED									
TOTAL	611	618	616	621	637	648	650	657	651

IAC/PSCP FORM 101.2  
R3/11

## FTE ENROLLMENT PROJECTIONS BY GRADE

LEA CALVERT DATE 29-APRIL-23

School PLUM POINT ELEMENTARY SCHOOL

Enrollments as of September 30TH									
	2022 Actual	2023 Year 1	2024 Year 2	2025 Year 3	2026 Year 4	2027 Year 5	2028 Year 6	2029 Year 7	2032 Year 10
PRE_K									
KINDERGARTEN	88	84	91	91	91	90	90	90	90
1st	87	89	86	92	92	92	91	91	91
2nd	120	91	93	89	96	96	96	95	95
3rd	88	123	95	96	92	99	99	99	98
4th	87	91	130	99	99	95	103	103	102
5th	111	89	94	133	101	101	97	105	104
6th									
7th									
8th									
9th									
10th									
11th									
12th									
SP ED									
TOTAL	581	567	589	600	571	573	576	583	580

IAC/PSCP FORM 101.2  
R3/11

## FTE ENROLLMENT PROJECTIONS BY GRADE

LEA CALVERT DATE 29-APRIL-23

School ST. LEONARD ELEMENTARY SCHOOL

Enrollments as of September 30TH									
	2022 Actual	2023 Year 1	2024 Year 2	2025 Year 3	2026 Year 4	2027 Year 5	2028 Year 6	2029 Year 7	2032 Year 10
PRE_K									
KINDERGARTEN	65	62	67	67	67	66	66	66	65
1st	72	66	63	68	68	68	67	67	66
2nd	55	75	69	66	71	71	71	70	70
3rd	73	56	78	72	68	73	73	73	72
4th	84	76	58	81	75	70	76	76	75
5th	78	86	77	59	82	76	72	78	77
6th									
7th									
8th									
9th									
10th									
11th									
12th									
SP ED									
TOTAL	427	421	412	413	431	424	425	430	425

IAC/PSCP FORM 101.2  
R3/11

## FTE ENROLLMENT PROJECTIONS BY GRADE

LEA CALVERT DATE 29-APRIL-23

School SUNDERLAND ELEMENTARY SCHOOL

Enrollments as of September 30TH									
	2022 Actual	2023 Year 1	2024 Year 2	2025 Year 3	2026 Year 4	2027 Year 5	2028 Year 6	2029 Year 7	2032 Year 10
PRE_K									
KINDERGARTEN	98	93	101	103	103	102	102	102	101
1st	93	98	96	102	104	104	103	103	102
2nd	103	96	104	100	106	108	108	107	107
3rd	115	106	101	107	103	109	111	111	110
4th	105	119	112	104	111	107	113	115	114
5th	102	106	125	114	106	113	110	116	117
6th									
7th									
8th									
9th									
10th									
11th									
12th									
SP ED									
TOTAL	616	618	639	630	633	643	647	654	651

IAC/PSCP FORM 101.2  
R3/11

## FTE ENROLLMENT PROJECTIONS BY GRADE

LEA CALVERT DATE 29-APRIL-23

School WINDY HILL ELEMENTARY SCHOOL

Enrollments as of September 30TH									
	2022 Actual	2023 Year 1	2024 Year 2	2025 Year 3	2026 Year 4	2027 Year 5	2028 Year 6	2029 Year 7	2032 Year 10
PRE_K									
KINDERGARTEN	107	102	111	110	110	109	109	109	108
1st	111	108	103	112	111	111	110	110	109
2nd	92	116	112	107	116	115	115	114	114
3rd	106	94	120	116	110	120	119	119	118
4th	96	110	97	124	120	114	124	123	122
5th	104	98	112	99	126	122	117	127	125
6th									
7th									
8th									
9th									
10th									
11th									
12th									
SP ED									
TOTAL	616	628	655	668	693	691	694	702	696

IAC/PSCP FORM 104101.2  
102R3/11

## FTE ENROLLMENT PROJECTIONS BY GRADE

LEA CALVERT DATE 29-APRIL-23

School CALVERT MIDDLE SCHOOL

Enrollments as of September 30TH									
	2022 Actual	2023 Year 1	2024 Year 2	2025 Year 3	2026 Year 4	2027 Year 5	2028 Year 6	2029 Year 7	2032 Year 10
PRE_K									
KINDERGARTEN									
1st									
2nd									
3rd									
4th									
5th									
6th	215	186	206	234	211	210	220	189	206
7th	215	219	192	209	238	214	213	224	210
8th	222	219	226	196	212	243	218	217	213
9th									
10th									
11th									
12th									
SP ED									
TOTAL	652	624	624	639	661	667	651	630	629

IAC/PSCP FORM 101.2  
R3/11

## FTE ENROLLMENT PROJECTIONS BY GRADE

LEA CALVERT DATE 29-APRIL-23

School MILL CREEK MIDDLE SCHOOL

Enrollments as of September 30TH									
	2022 Actual	2023 Year 1	2024 Year 2	2025 Year 3	2026 Year 4	2027 Year 5	2028 Year 6	2029 Year 7	2032 Year 10
PRE_K									
KINDERGARTEN									
1st									
2nd									
3rd									
4th									
5th									
6th	152	135	148	164	148	155	150	221	238
7th	138	155	137	150	167	150	157	152	242
8th	156	141	158	140	153	171	153	161	250
9th									
10th									
11th									
12th									
SP ED									
TOTAL	446	431	443	454	468	476	460	534	730

IAC/PSCP FORM 101.2  
R3/11

## FTE ENROLLMENT PROJECTIONS BY GRADE

LEA CALVERT DATE 29-APRIL-23

School NORTHERN MIDDLE SCHOOL

Enrollments as of September 30TH									
	2022 Actual	2023 Year 1	2024 Year 2	2025 Year 3	2026 Year 4	2027 Year 5	2028 Year 6	2029 Year 7	2032 Year 10
PRE_K									
KINDERGARTEN									
1st									
2nd									
3rd									
4th									
5th									
6th	230	239	232	218	220	232	207	311	337
7th	192	234	244	236	222	224	236	211	342
8th	214	196	241	248	240	226	228	240	348
9th									
10th									
11th									
12th									
SP ED									
TOTAL	636	669	717	702	682	682	671	762	1027

IAC/PSCP FORM 101.2  
R3/11

## FTE ENROLLMENT PROJECTIONS BY GRADE

LEA CALVERT DATE 29-APRIL-23

School PLUM POINT MIDDLE SCHOOL

Enrollments as of September 30TH									
	2022 Actual	2023 Year 1	2024 Year 2	2025 Year 3	2026 Year 4	2027 Year 5	2028 Year 6	2029 Year 7	2032 Year 10
PRE_K									
KINDERGARTEN									
1st									
2nd									
3rd									
4th									
5th									
6th	219	222	189	197	249	185	211	181	195
7th	208	223	227	193	200	253	189	215	199
8th	190	212	230	232	197	204	259	193	203
9th									
10th									
11th									
12th									
SP ED									
TOTAL	617	657	646	622	646	642	659	589	597

IAC/PSCP FORM 101.2  
R3/11

## FTE ENROLLMENT PROJECTIONS BY GRADE

LEA CALVERT DATE 29-APRIL-23

School SOUTHERN MIDDLE SCHOOL

Enrollments as of September 30TH									
	2022 Actual	2023 Year 1	2024 Year 2	2025 Year 3	2026 Year 4	2027 Year 5	2028 Year 6	2029 Year 7	2032 Year 10
PRE_K									
KINDERGARTEN									
1st									
2nd									
3rd									
4th									
5th									
6th	157	156	188	156	141	151	174	75	81
7th	138	160	158	190	158	143	154	178	82
8th	154	141	163	161	193	161	145	157	84
9th									
10th									
11th									
12th									
SP ED									
TOTAL	449	457	509	507	492	455	473	410	247

IAC/PSCP FORM 101.2  
R3/11

## FTE ENROLLMENT PROJECTIONS BY GRADE

LEA CALVERT DATE 29-APRIL-23

School WINDY HILL MIDDLE SCHOOL

Enrollments as of September 30TH									
	2022 Actual	2023 Year 1	2024 Year 2	2025 Year 3	2026 Year 4	2027 Year 5	2028 Year 6	2029 Year 7	2032 Year 10
PRE_K									
KINDERGARTEN									
1st									
2nd									
3rd									
4th									
5th									
6th	253	218	231	246	213	272	275	216	232
7th	258	258	220	234	250	216	276	279	236
8th	226	263	263	224	238	255	220	281	243
9th									
10th									
11th									
12th									
SP ED									
TOTAL	737	739	714	704	701	743	771	776	711

IAC/PSCP FORM 101.2  
R3/11

## FTE ENROLLMENT PROJECTIONS BY GRADE

LEA CALVERT DATE 29-APRIL-23

School CALVERT HIGH SCHOOL

Enrollments as of September 30TH									
	2022 Actual	2023 Year 1	2024 Year 2	2025 Year 3	2026 Year 4	2027 Year 5	2028 Year 6	2029 Year 7	2032 Year 10
PRE_K									
KINDERGARTEN									
1st									
2nd									
3rd									
4th									
5th									
6th									
7th									
8th									
9th	310	311	300	331	289	328	338	300	203
10th	292	307	310	298	329	287	326	336	330
11th	249	272	288	289	279	306	269	305	289
12th	290	258	283	298	299	287	316	278	290
SP ED									
TOTAL	1141	1148	1181	1216	1196	1208	1249	1219	1112

IAC/PSCP FORM 101.2  
R3/11

## FTE ENROLLMENT PROJECTIONS BY GRADE

LEA CALVERT DATE 29-APRIL-23

School HUNTINGTOWN HIGH SCHOOL

Enrollments as of September 30TH									
	2022 Actual	2023 Year 1	2024 Year 2	2025 Year 3	2026 Year 4	2027 Year 5	2028 Year 6	2029 Year 7	2032 Year 10
PRE_K									
KINDERGARTEN									
1st									
2nd									
3rd									
4th									
5th									
6th									
7th									
8th									
9th	364	287	344	351	358	298	319	373	292
10th	344	363	288	344	351	358	299	320	335
11th	315	321	340	269	321	327	334	279	301
12th	336	325	332	351	277	331	338	343	357
SP ED									
TOTAL	1359	1296	1304	1315	1307	1314	1290	1315	1285

IAC/PSCP FORM 101.2  
R3/11

## FTE ENROLLMENT PROJECTIONS BY GRADE

LEA CALVERT DATE 29-APRIL-23

School NORTHERN HIGH SCHOOL

Enrollments as of September 30TH									
	2022 Actual	2023 Year 1	2024 Year 2	2025 Year 3	2026 Year 4	2027 Year 5	2028 Year 6	2029 Year 7	2032 Year 10
PRE_K									
KINDERGARTEN									
1st									
2nd									
3rd									
4th									
5th									
6th									
7th									
8th									
9th	383	366	358	413	372	399	390	356	474
10th	416	381	365	356	411	371	398	389	405
11th	354	388	356	340	332	383	346	372	390
12th	341	365	401	367	351	342	395	358	343
SP ED									
TOTAL	1494	1500	1480	1476	1466	1495	1529	1475	1612

IAC/PSCP FORM 101.2  
R3/11

## FTE ENROLLMENT PROJECTIONS BY GRADE

LEA CALVERT DATE 29-APRIL-23

School PATUXENT HIGH SCHOOL

Enrollments as of September 30TH									
	2022 Actual	2023 Year 1	2024 Year 2	2025 Year 3	2026 Year 4	2027 Year 5	2028 Year 6	2029 Year 7	2032 Year 10
PRE_K									
KINDERGARTEN									
1st									
2nd									
3rd									
4th									
5th									
6th									
7th									
8th									
9th	272	247	222	236	227	252	259	234	321
10th	263	271	246	221	235	227	252	259	254
11th	254	245	253	229	206	220	213	236	231
12th	240	262	253	261	236	212	227	220	227
SP ED									
TOTAL	1029	1025	974	947	904	911	951	949	1033

IAC/PSCP FORM 101.2  
R3/11

## FTE ENROLLMENT PROJECTIONS BY GRADE

LEA CALVERT DATE 29-APRIL-23

School CALVERT COUNTRY SCHOOL

Enrollments as of September 30TH									
	2022 Actual	2023 Year 1	2024 Year 2	2025 Year 3	2026 Year 4	2027 Year 5	2028 Year 6	2029 Year 7	2032 Year 10
PRE_K									
KINDERGARTEN	0	0	0	0	0	0	0	0	0
1st	0	0	0	0	0	0	0	0	0
2nd	1	1	1	1	1	1	1	1	1
3rd	1	1	1	1	1	1	1	1	0
4th	0	0	0	0	0	0	0	0	0
5th	2	2	2	2	2	2	2	2	0
6th	4	4	4	4	4	4	4	0	0
7th	2	2	2	2	2	2	0	0	0
8th	2	2	2	2	2	0	0	0	0
9th	3	3	3	3	0	0	0	0	0
10th	3	3	3	0	0	0	0	0	0
11th	3	3	0	0	0	0	0	0	0
12th	14	0	0	0	0	0	0	0	0
SP ED									
TOTAL	35	21	18	15	12	10	8	4	1

IAC/PSCP FORM 101.2  
R3/11

## FTE ENROLLMENT PROJECTIONS BY GRADE

LEA CALVERT DATE 29-APRIL-23

School ALTERNATIVE ED

Enrollments as of September 30TH									
	2022 Actual	2023 Year 1	2024 Year 2	2025 Year 3	2026 Year 4	2027 Year 5	2028 Year 6	2029 Year 7	2032 Year 10
PRE_K									
KINDERGARTEN	0	0	0	0	0	0	0	0	0
1st	0	0	0	0	0	0	0	0	0
2nd	0	0	0	0	0	0	0	0	0
3rd	0	0	0	0	0	0	0	0	0
4th	0	0	0	0	0	0	0	0	0
5th	0	0	0	0	0	0	0	0	0
6th	0	0	0	0	0	0	0	0	0
7th	0	0	0	0	0	0	0	0	0
8th	0	0	0	0	0	0	0	0	0
9th	1	1	1	1	1	1	1	1	1
10th	1	1	1	1	1	1	1	1	1
11th	1	1	1	1	1	1	1	1	1
12th	0	0	0	0	0	0	0	0	0
SP ED									
TOTAL	3	3	3	3	3	3	3	3	3

## **FTE ENROLLMENT PROJECTIONS BY GRADE**

*CALVERT COUNTY PUBLIC SCHOOLS*

*ALL FACILITIES FOR 2032*

Grade	Count
PRE-K	
KINDERGARTEN	1063
1st	1075
2nd	1127
3rd	1162
4th	1205
5th	1235
6th	1289
7th	1311
8th	1341
9th	1290
10th	1324
11th	1211
12th	1217
SP ED*	1
TOTAL	15,851

\*If not included above

**THIS PAGE LEFT BLANK**

## SECTION II

### FACILITIES INVENTORY

**FACILITIES INVENTORY**LEA: Calvert CountyDATE: 4/29/2023

Page 1 of 4

SCHOOL NAME & ADDRESS	GRADES	SRC	PRIOR FALL ENRLMT	% UTIL	ACREAGE	BUILDING DATE		PHYS. COND.	COMMENTS
			9/22			DATE	SQ.FT.		
Appeal Elementary 11655 H. G. Trueman Road Lusby, MD 20657	Pre-K - K	254	169	67%	26.4	1949 1956 1958 1971 1988	59,275	Good	Combined w/PES
Barstow Elementary School 295 Williams Road Prince Frederick, MD 20678	Pre-K - 5	674	656	97%	22	2008	74,865	Adequate*	Partial HVAC Equipment Replacement FY 2029
Beach Elementary 7900 Old Bayside Road Chesapeake Beach, MD 20732	Pre-K - 5	471	490	104%	17.99	1953 1971 1981 2006	55,341	Adequate*	2 <sup>nd</sup> and Final Year Funding - Prior CIP FY 2023
Calvert Elementary 1450 Dares Beach Road Prince Frederick, MD 20678	Pre-K - 5	596	475	80%	18.2	1964 1974 1981 2007	63,362	Adequate*	Feasibility Study - FY 2025 Planning Request - FY 2028
Dowell Elementary 12680 H. G. Trueman Road Lusby, MD 20657	Pre-K - 5	628	576	92%	19	1999 2007	70,435	Good*	
Huntingtown Elementary 4345 Huntingtown Road Huntingtown, MD 20639	Pre-K - 5	553	518	94%	21.0	1971 1980 2006	62,070	Adequate*	Partial Roof Replacement FY 2028
Mt. Harmony Elementary 900 W. Mt. Harmony Road Owings, MD 20736	K - 5	604	609	101%	15.0	1961 1970 1975 2007	53,069	Adequate*	Feasibility Study - FY 2029

\* Physical condition of schools based on results of revised IAC Facility Maintenance-Effectiveness Assessment (MEA) rubric.  
(SRC) Adjusted for "K" Additions

**FACILITIES INVENTORY**LEA: Calvert CountyDATE: 4/29/2023

Page 2 of 4

SCHOOL NAME & ADDRESS	GRADES	SRC	PRIOR FALL ENRLMT	% UTIL	ACREAGE	BUILDING DATE		PHYS. COND.	COMMENTS
			9/22			DATE	SQ.FT.		
Mutual Elementary 1455 Ball Road Port Republic, MD 20676	K - 5	494	367	74%	26.0	1975 1989 2007	62,824	Good	Well Replacement FY 2024 Partial HVAC Systemic - FY 2029
Patuxent Elementary 35 Appeal Lane Lusby, MD 20657	1 - 5	553	511	92%	26.4	1992 2006	59,049	Adequate*	Combined w/AES HVAC Systemic - FY 2025 Roof and Clerestory Window Replacement - FY 2029
Plum Point Elementary 1245 Plum Point Road Huntingtown, MD 20639	Pre-K - 5	625	581	93%	(Shared with Plum Point Middle) 191.0	1991 2006	62,337	Adequate*	HVAC Systemic - FY 2029
St. Leonard Elementary 5370 St. Leonard Road St. Leonard, MD 20685	Pre-K - 5	585	459	78%	28.0	1996 2006	71,680	Good	HVAC Systemic - FY 2029
Sunderland Elementary 150 Clyde Jones Road Sunderland, MD 20689	Pre-K - 5	700	651	93%	9.6	1988 2005	69,494	Good	Partial HVAC Systemic - FY 2026
Windy Hill Elementary 9550 Boyds Turn Road Owings, MD 20736	Pre-K - 5	703	628	89%	16.0	1996 2006	66,126	Good	HVAC Systemic - FY 2029

\* Physical condition of schools based on results of revised IAC Facility Maintenance-Effectiveness Assessment (MEA) rubric.  
(SRC) Adjusted for "K" Additions

# FACILITIES INVENTORY

LEA: Calvert CountyDATE: 4/29/2023

Page 3 of 4

SCHOOL NAME & ADDRESS	GRADES	SRC	PRIOR FALL ENRLMT	% UTIL	ACREAGE	BUILDING DATE		PHYS. COND.	COMMENTS
			9/22			DATE	SQ.FT.		
Calvert Middle 655 Chesapeake Blvd. Prince Frederick, MD 20678	6 - 8	784	652	83%	(Shared with Calvert High) 83.3	2010	104,005	Adequate*	
Mill Creek Middle 12200 Southern Connector Blvd. Lusby, MD 20657	6 - 8	756	446	59%	34	2000	101,300	Good	HVAC Systemic - FY 2028
Northern Middle 2954 Chaneyville Road Owings, MD 20736	6 - 8	680	636	94%	(Shared with Northern High) 112.9	1976	88,780	Good	Planning - FY 2024 Construction - FY 2025-28
Plum Point Middle 1475 Plum Point Road Huntingtown, MD 20639	6 - 8	760	617	81%	(Shared with Plum Point Elementary) 191.0	1992	101,300	Good	Partial HVAC Systemic - FY 2023-2024 Partial HVAC Systemic - FY 2025 Storefront and Skylight Replacement FY 2025
Southern Middle 9615 H. G. Trueman Road Lusby, MD 20657	6 - 8	795	449	56%	26.0	1979 1996	106,260	Good	
Windy Hill Middle 9550 Boyds Turn Road Owings, MD 20736	6 - 8	760	737	97%	24.0	1998	101,300	Good	HVAC Systemic - FY 2025

\* Physical condition of schools based on results of revised IAC Facility Maintenance-Effectiveness Assessment (MEA) rubric.

**FACILITIES INVENTORY**LEA: Calvert CountyDATE: 4/29/2023

Page 4 of 4

SCHOOL NAME & ADDRESS	GRADES	SRC	PRIOR FALL ENRLMT	% UTIL	ACREAGE	BUILDING DATE		PHYS. COND.	COMMENTS
			9/22			DATE	SQ.FT.		
Calvert High 520 Fox Run Blvd. Prince Frederick, MD 20678	9 – 12	1148	1143	99%	83.3	2013	236,300	Superior	Sewage Pump Station FY 2026 Field House Renovation – FY 2027
Huntingtown High 4125 N. Solomons Island Rd Huntingtown, MD 20639	9 – 12	1500	1360	91%	89	2004	206,248	Adequate*	Track Resurfacing FY 2025 Chiller Replacement - FY 2028
Northern High 2950 Chaneyville Road Owings, MD 20736	9 – 12	1440	1494	104%	(Shared with Northern Middle) 112.9	2020	248,973	Adequate*	Mary Harrison Center Partial Re-roof -FY 2024 Mary Harrison Center Auditorium AHU Replacement – FY 2025
Patuxent High 12485 Southern Connector Blvd. Lusby, MD 20657	9 – 12	1230	1029	84%	73.0	1996	185,900	Good	Field House – FY 2025 Sewage Pump Station Replacement – FY 2026 Re-roofing – FY 2028
Career and Technology Academy 330 Dorsey Road Prince Frederick, MD 20678	9 – 12	445	Shared with Northern, Huntingtown, Patuxent & Calvert High	N/A	7.0	1970 2005	113,354	Good	
Calvert Country 1350 Dares Beach Road Prince Frederick, MD 20678	Special Ed	120	38	32%	14.82	1958 1983	33,148	Adequate*	Feasibility Study – FY 2025

\* Physical condition of schools based on results of revised IAC Facility Maintenance-Effectiveness Assessment (MEA) rubric.

**THIS PAGE LEFT BLANK**

## SECTION III

### FACILITIES NEEDS

**FACILITIES NEEDS SUMMARY**LEA: Calvert CountyDATE: 4/29/2023

EXISTING AND/OR PROPOSED SCHOOL	TYPE OF PROJECT	GRADES	SRC	ENROLLMENTS		JUSTIFICATION FOR PROJECT	PLANNING YEAR REQUEST
				ACTUAL	5 <sup>TH</sup> YEAR PROJ.		
Northern Middle School	New Construction and/or Renovation	6-8	680	636	671	Replacement, pending a feasibility study, of the facility is needed to enhance instructional delivery and upgrade systemics.	FY 2024 Adjacent PFA
Calvert Elementary School	New Construction and/or Renovation	Pre-K thru 5	596	475	449	Replacement or renovation pending a feasibility study, of the facility is needed to enhance instructional delivery and upgrade systemics. Situated adjacent to a PFA.	FY 2029 Adjacent PFA
Calvert Country School	New Construction and/or Renovation	Pre-K thru 12	120	38	8	Renovation of the facility pending a feasibility study, is needed to enhance instructional delivery and upgrade systemics. Situated adjacent to a PFA.	FY 2029 Adjacent PFA
Mt. Harmony Elementary	New Construction and/or Renovation	K - 5	604	609	622	Replacement or renovation pending a feasibility study, of the facility is needed to enhance instructional delivery and upgrade systemics.	FY 2032 Adjacent PFA

**FACILITIES NEEDS****SYSTEMIC PROJECTS**LEA: Calvert CountyDATE: 4/29/2023

EXISTING AND/OR PROPOSED SCHOOL	TYPE OF PROJECT	GRADES	SRC	ENROLLMENTS		JUSTIFICATION FOR PROJECT	FUNDING YEAR REQUEST
				ACTUAL	5 <sup>TH</sup> YEAR PROJ.		
Calvert Elementary School	HVAC Equipment Replacement	PreK-5	596	475	449	(2 <sup>nd</sup> year of funding request) Existing air handling units and cold water supply piping are original to building and require replacement.	FY 2023
Plum Point Middle School	HVAC Systemic	6-8	760	617	659	Rooftop units, Air Handling Units, and associated terminal units are showing signs of frequent problems. This is a partial systemic due to funding constraints.	FY 2023-24
Northern High School – Mary Harrison Center	Partial Re-roof (HSFF)	10-12	1440	1494	1529	Replace all sections of roofing from original construction.	FY 2024
Windy Hill Middle School	HVAC Systemic	6-8	760	737	779	Existing chiller is problematic to maintain. The manufacturer no longer exists and no support vendors exist.	FY 2025
Plum Point Middle School	HVAC Systemic	6-8	760	617	659	Rooftop units, Air Handling Units, and associated terminal units are showing signs of frequent problems. This is a partial systemic that will replace some equipment not completed as part of the FY23/24 project due to funding constraints.	FY 2025

**FACILITIES NEEDS****SYSTEMIC PROJECTS**LEA: Calvert CountyDATE: 4/29/2023

EXISTING AND/OR PROPOSED SCHOOL	TYPE OF PROJECT	GRADES	SRC	ENROLLMENTS		JUSTIFICATION FOR PROJECT	PLANNING YEAR REQUEST
				ACTUAL	5 <sup>TH</sup> YEAR PROJ.		
Plum Point Middle School	Storefront & Skylight Replacement	6-8	760	617	659	Skylights above media center and aluminum storefront at front and rear of building are in need of constant repair and need replacement.	FY 2025
Northern High School – Mary Harrison Center	Partial HVAC Equipment Replacement	9-12	1440	1494	1529	Replacement of auditorium HVAC and select classroom HVAC equipment that was not replaced with Northern High School Replacement project completed in 2020..	FY 2025
Patuxent Elementary School	HVAC Systemic	1-5	553	Part of AES (PAC) 511	548	HVAC Systemic consisting of air handlers, terminal units and pneumatic controls within original portion of building,	FY 2025
Sunderland Elementary School	HVAC Systemic	PreK-5	700	651	647	Partial HVAC Systemic consisting of air handlers, terminal units and pneumatic controls within original portion of building, that will be 35 years old.	FY 2026
Mill Creek Middle	HVAC Systemic	6 - 8	756	446	460	Full HVAC Systemic, replacing equipment original to the building. Equipment will be 28 years old and beyond its useful life.	FY 2028

**FACILITIES NEEDS****SYSTEMIC PROJECTS**LEA: Calvert CountyDATE: 4/29/2023

EXISTING AND/OR PROPOSED SCHOOL	TYPE OF PROJECT	GRADES	SRC	ENROLLMENTS		JUSTIFICATION FOR PROJECT	PLANNING YEAR REQUEST
				ACTUAL	5 <sup>TH</sup> YEAR PROJ.		
Huntingtown Elementary School	Partial Re-roofing	PreK - 5	553	518	522	Original section of building and 1988 additions are served by HVAC equipment which is starting to have recurring failures.	FY 2028
Patuxent High School	Re-roofing	9 - 12	1230	1029	951	The B.U.R. roof is original to the 1996 building, showing signs of wear and tear, and will be beyond its useful life.	FY 2028
Huntingtown High School	HVAC Systemic	9 - 12	1500	1360	1291	Replacement of primary chiller for building.	FY 2028
Patuxent Elementary School	Roof and Clerestory Windows Replacement	1-5	553	Part of AES (PAC) 511	548	Original membrane portion of roof will be beyond its useful life and has begun to show signs of wear. Clerestory windows are source of leaking and will be addressed.	FY 2029
St. Leonard Elementary School	HVAC Systemic	PreK - 5	585	459	425	Full HVAC Systemic, replacing equipment original to the building. Equipment will be 32 years old and beyond its useful life.	FY 2029

**FACILITIES NEEDS****SYSTEMIC PROJECTS**LEA: Calvert CountyDATE: 4/29/2023

EXISTING AND/OR PROPOSED SCHOOL	TYPE OF PROJECT	GRADES	SRC	ENROLLMENTS		JUSTIFICATION FOR PROJECT	PLANNING YEAR REQUEST
				ACTUAL	5 <sup>TH</sup> YEAR PROJ.		
Plum Point Elementary School	Roof and Clerestory Windows Replacement	PreK - 5	625	581	576	Original membrane portion of roof will be beyond its useful life and has begun to show signs of wear. Clerestory windows are source of leaking and will be addressed..	FY 2029
Barstow Elementary School	Partial HVAC Systemic	PreK - 5	674	656	670	The Energy Recovery Units (ERUs) serving the Gym and Cafeteria are showing signs of wear and tear, and will be beyond its useful life.	FY 2029
Windy Hill Elementary School	HVAC Systemic	PreK - 5	703	628	694	Full HVAC Systemic, replacing equipment original to the building. Equipment will be 32 years old and beyond its useful life.	FY 2029

## **PROJECTED SCHOOL NEEDS**

The Beach Elementary School Replacement Project is currently underway and will replace the existing school, which dates back to 1953. Planning for the replacement of this facility was approved in the FY 2021 CIP. The second and final year of funding occurred in FY 2023.

The Northern Middle School Project will leverage Build to Learn Act (BTL) funding to start planning, allowing design to start in FY 2024. Construction funding will be requested from FY 2025 - FY 2027, and consist of BTL funds, State CIP funds, and Local funds.

Calvert Elementary and Calvert Country School will be evaluated simultaneously via a feasibility study since they share adjoining parcels. Both schools suffer from outdated spaces and systemic components that fail to meet many of the IAC sufficiency standards. The study is expected in FY 2025 with design in FY 2028. The first year of construction funding would occur in FY 2029.

Mt. Harmony Elementary will undergo a feasibility study in FY 2029 to address space deficiencies and required systemic component upgrades.

In the FY 2024 through FY 2029 cycles, our systemic requests will include:

FY 2024	Plum Point Middle School HVAC Systemic (Phase 2)
FY 2024	Mary Harrison Partial Re-roofing (HSFF)
FY 2024	Mutual Elementary School Well System Replacement
FY 2024	Sunderland Elementary HVAC Systemic Design
FY 2025	Windy Hill Middle School HVAC Systemic Replacement
FY 2025	Plum Point Middle School Partial HVAC Equipment Replacement (HSFF)
FY 2025	Plum Point Middle School Storefront and Skylight Replacement
FY 2025	Mary Harrison Center Auditorium HVAC
FY 2025	Patuxent Elementary School HVAC Systemic
FY 2026	Sunderland Elementary School HVAC Systemic
FY 2028	Mill Creek Middle School HVAC Systemic
FY 2028	Huntingtown Elementary School Partial Roof Replacement

FY 2028	Patuxent High School Re-roofing
FY 2028	Huntingtown High School Chiller Replacement
FY 2029	Patuxent Elementary School Roof and Clerestory Windows Replacement
FY 2029	St. Leonard Elementary School HVAC
FY 2029	Plum Point Elementary HVAC Systemic Replacement
FY 2029	Barstow Elementary Partial HVAC Equipment Replacement
FY 2029	Windy Hill Elementary School HVAC Equipment Replacement

With the exception of select schools which require further evaluation to address outdated instructional spaces that fail to meet the IAC sufficiency standards or anticipate capacity issues, most of our remaining projects fall in the systemic renovation category. The majority of our systemic needs consist of HVAC, roofing, and window replacement projects.



## Maryland DEPARTMENT OF PLANNING

5/5/2023

Dr. Andraé Townsel  
Superintendent  
Calvert County Public Schools  
1305 Dares Beach Road  
Prince Frederick, MD 20678

Dear Dr. Townsel,

Thank you for submitting the Calvert County Public Schools enrollment projections for 2023-2032, in accordance with the regulations of the Interagency Commission on School Construction (IAC).

The Maryland Department of Planning reviewed your submission and compared your data to the school enrollment projections generated by the State Data Center (see attached) and have found the difference to be less than five percent for the years 2023-2032. Therefore, your projections can be used to prepare your 2023 Educational Facilities Master Plan (EFMP) and 2024 Capital Improvement Program submissions.

When preparing your EFMP submission, please ensure the 2022 actual enrollment on your calculation worksheet is consistent with the official enrollment figure generated by the Maryland State Department of Education. The Maryland Department of Planning recognizes the Maryland State Department of Education's K-12 enrollment figure as the official enrollment for the 2022/2023 school year.

We look forward to receiving your EFMP in July. A copy of this letter and its attachment should be included in the plan. If you have any questions or concerns, please don't hesitate to contact me at [jill.lemke1@maryland.gov](mailto:jill.lemke1@maryland.gov) or (410) 767-7179.

Sincerely,

Jill Lemke  
Manager of Infrastructure and Development

cc: Darrell Barricklow, CCPS  
Sheila Stevens, CCPS  
Shuchita Warner, CCPS  
Darlene White, CCPS

<i>Comparison of School Enrollment Projections</i>											
Jurisdiction	2022	2023	2024	2025	2026	2027	2028	2029	2030	2031	2032
Calvert	15,047	15,047	15,208	15,256	15,283	15,410	15,548	15,580	15,701	15,786	15,851
MDP	15,047	15,070	15,170	15,230	15,260	15,400	15,530	15,570	15,670	15,730	15,790
Diff	0	-23	38	26	23	10	18	10	31	56	61
% Diff	0.00%	-0.15%	0.25%	0.17%	0.15%	0.06%	0.12%	0.06%	0.20%	0.36%	0.39%

### **Nondiscrimination Statement**

Calvert County Public Schools does not discriminate on the basis of race, color, religion, sex, age, ancestry or national origin, familial status, marital status, physical or mental disability, sexual orientation, gender identity and expression, or genetic information in its programs and activities and provides equal access to the Boy Scouts and other designated youth groups. The following persons have been designated to handle inquiries regarding the non-discrimination policies:



- Director of Student Services
- Director of Human Resources  
443-550-8000

For further information on notice of non-discrimination, visit the Office for Civil Rights Complaint Assessment System at: <https://ocracas.ed.gov> or call 1-800-421-3481.

\*\*\*\*\*

### **Anti-sexual, Anti-racial and Anti-disability Harassment Statement**

Discrimination can manifest itself in behaviors such as bullying, harassment, or intimidation of individuals.

Calvert County Public Schools does not tolerate any form of harassment including, but not limited to, sexual, racial, or disability. Any individual (student, employee, or community member) who believes that he or she has been subjected to any form of harassment is encouraged to report the allegation of harassment. Students, parents, and community members may report allegations of harassment to: Mr. James Kurtz, Director of Student Services, Calvert County Public Schools, 1305 Dares Beach Road, Prince Frederick, MD 20678

Employees may report allegations of harassment to: Mr. Zachary Seawell, Director of Human Resources, Calvert County Public Schools, 1305 Dares Beach Road, Prince Frederick, MD 20678

Calvert County Public Schools is committed to conducting a prompt investigation for any allegation of harassment. If harassment has occurred, the individual will be disciplined promptly. Disciplinary actions for students found to have engaged in any form of harassment may result in suspension or expulsion. Disciplinary actions for employees found to have engaged in any form of harassment may result in suspension or termination.

Calvert County Public Schools encourages all students, parents, employees, and community members to work together to prevent any form of harassment.

For further information on notice of non-discrimination, visit the Office for Civil Rights Complaint Assessment System at: <https://ocracas.ed.gov> or call 1-800-421-3481.

### **Calvert County Public Schools Antiracism Statement**

Calvert County Public Schools explicitly denounces racism, bullying, discrimination, white supremacy, hate, and racial inequity in any form within our school community. Furthermore, CCPS will not tolerate the values, structures, and behaviors that perpetuate systemic racism.

Each member of the district, individually and collectively, is responsible for creating and nurturing a safe, antiracist learning environment where each student, staff member, and community partner is a respected and valued member of the CCPS community.

A handwritten signature in blue ink, appearing to read "Inez N. Claggett".

Inez N. Claggett  
Board of Education President

A handwritten signature in blue ink, appearing to read "Dr. Andraé Townsel".

Dr. Andraé Townsel  
Superintendent of Schools



June 15, 2023

At a regularly scheduled meeting of the Calvert County Public Schools  
Board of Education on June 15, 2023, the Educational Facilities Master  
Plan FY 2025 was approved by a vote of 4 to 0.



Inez N. Claggett, President

Antoine S. White, V. President

/Absent/

Dawn C. Balinski, Member

Jana L. Smith-Post, Member

Lisa M. Grenis, Member

Dr. Andraé Townsel  
Secretary-Treasurer and  
Superintendent



Director: Mary Beth Cook

## CALVERT COUNTY DEPARTMENT OF PLANNING & ZONING

205 Main Street  
Prince Frederick, Maryland 20678  
410-535-2348 • 301-855-1243  
Fax: 410-414-3092  
[www.calvertcountymd.gov](http://www.calvertcountymd.gov)

*Board of Commissioners*  
Christopher J. Gadway  
Earl F. Hance  
Mike Hart  
Kelly D. McConkey  
Steven R. Weems

June 8, 2023

Dr. Andraé Townsel, Superintendent  
Calvert County Public Schools  
1305 Dares Beach Road  
Prince Frederick, MD 20678

Dear Dr. Townsel,

Thank you for providing the draft FY 2025 Calvert County Public Schools Educational Facilities Master Plan to the Department of Planning & Zoning for review. This department has reviewed the master plan and finds it to be consistent with the Calvert County Comprehensive Plan, adopted in 2019 and amended in 2022.

The Board of County Commissioners must approve funding for any of the proposed FY 2025 capital expenditures as part of the County's Capital Improvement Plan.

Thank you for the opportunity to review the Plan.

Sincerely,

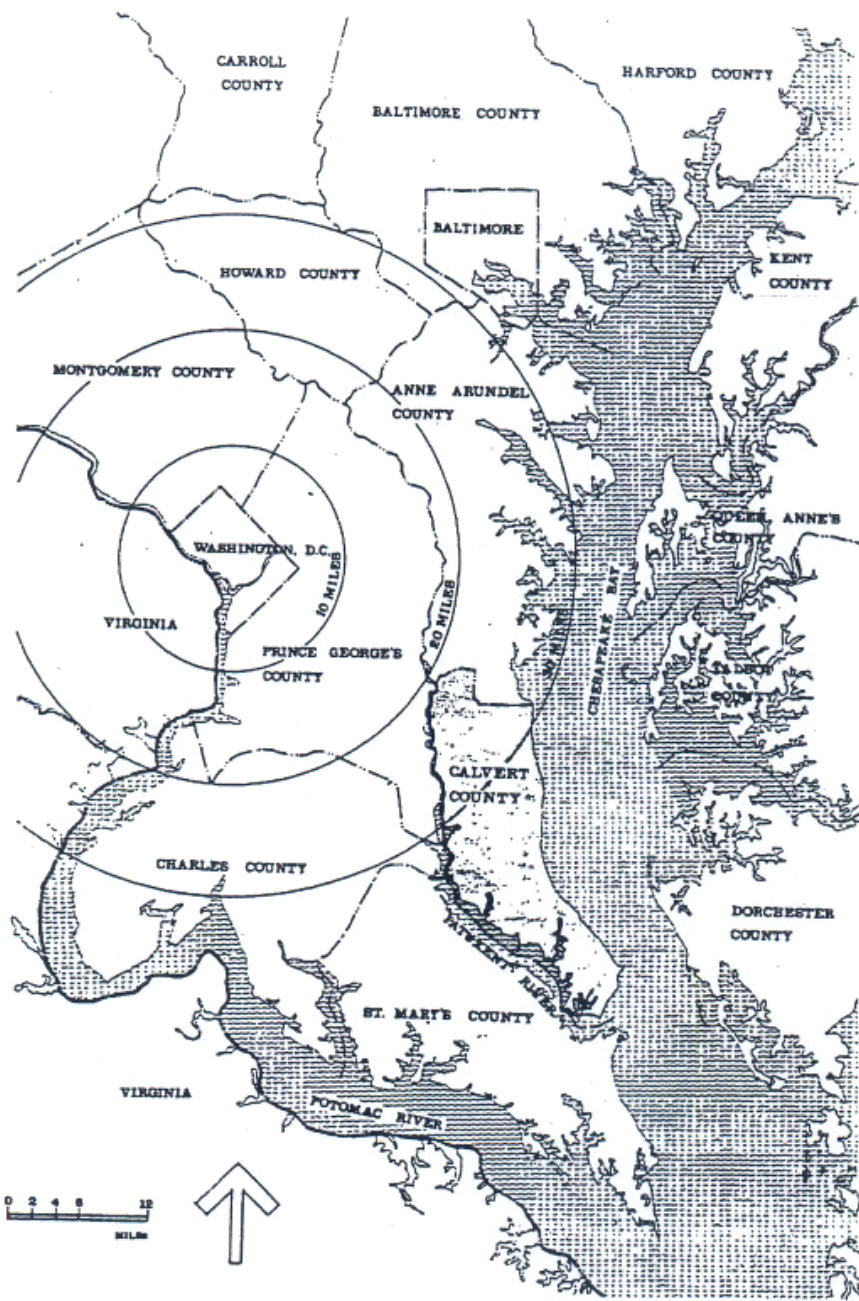
A handwritten signature in blue ink that reads "Mary Beth Cook".

Mary Beth Cook  
Director

**THIS PAGE LEFT BLANK**

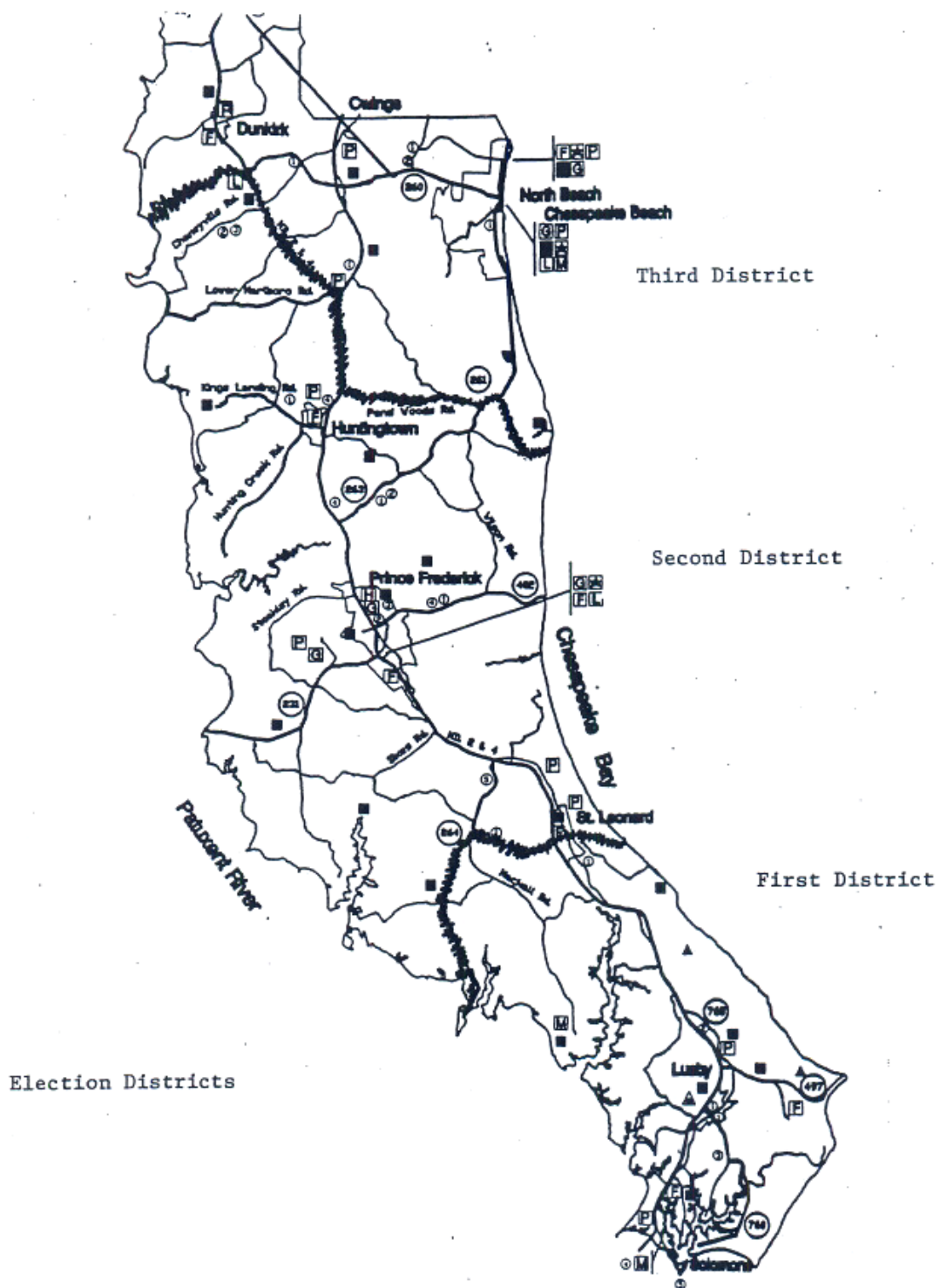
## SECTION IV

## APPENDIX

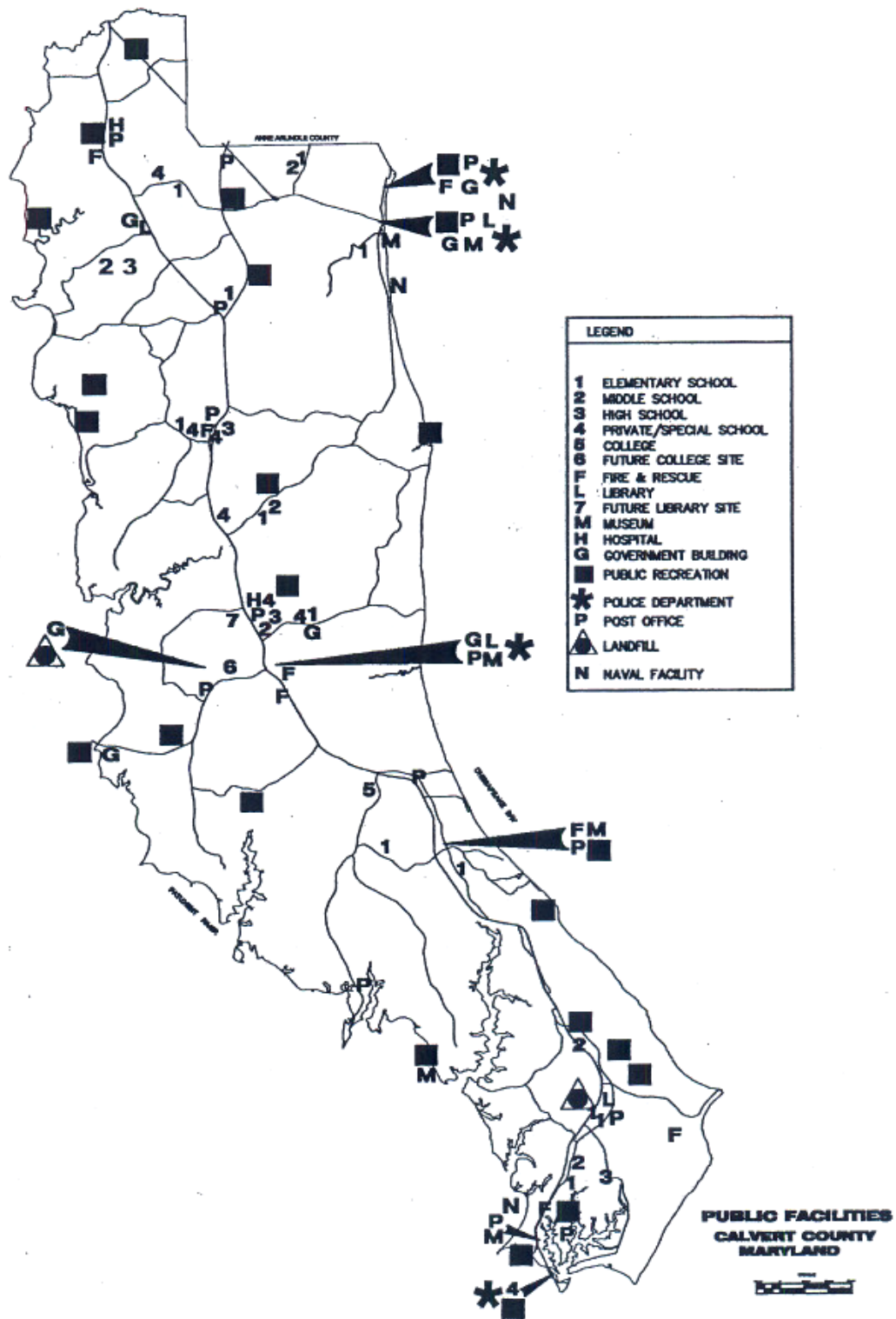


# LOCATION

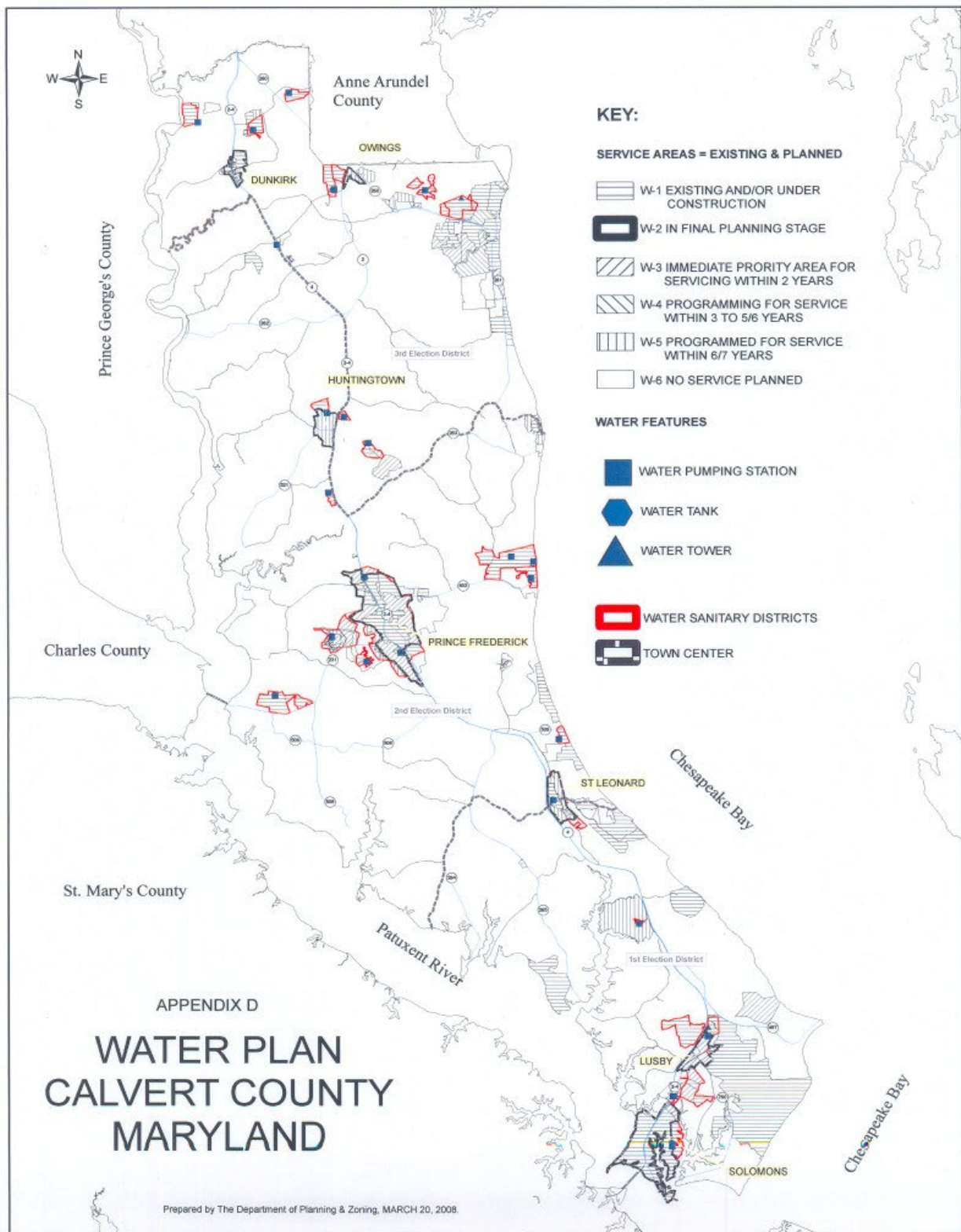
## Appendix A



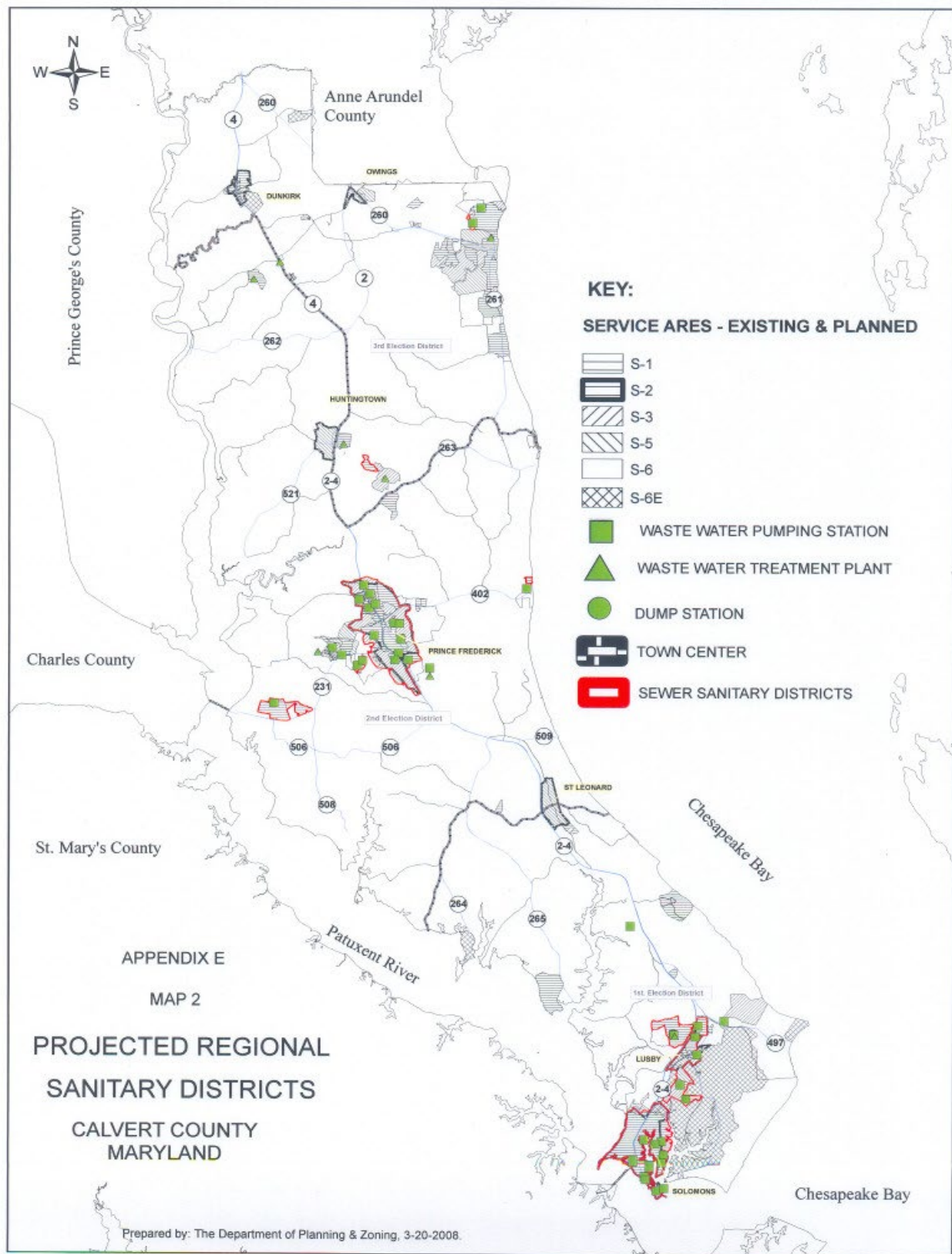
## Appendix B



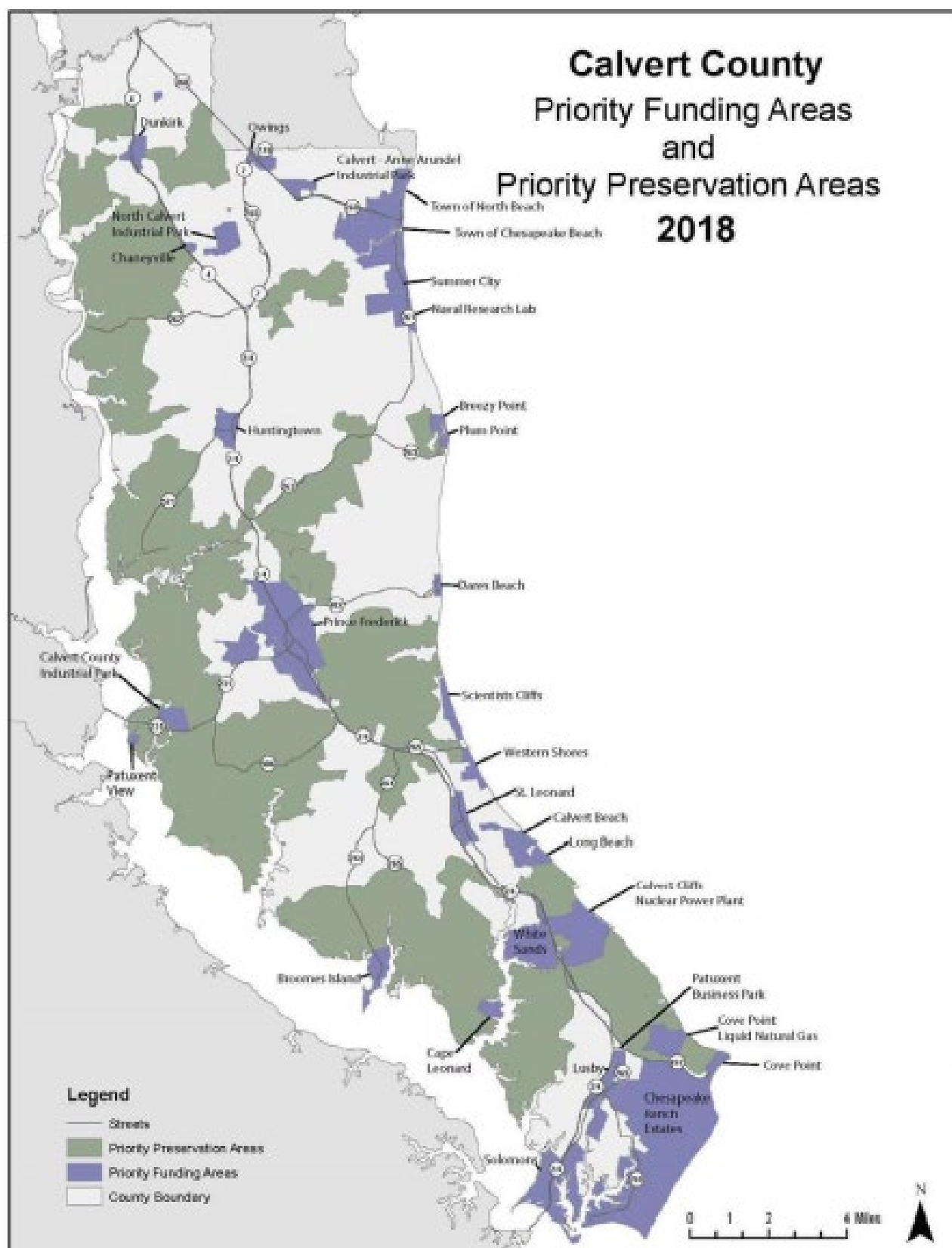
Appendix C



## Appendix D

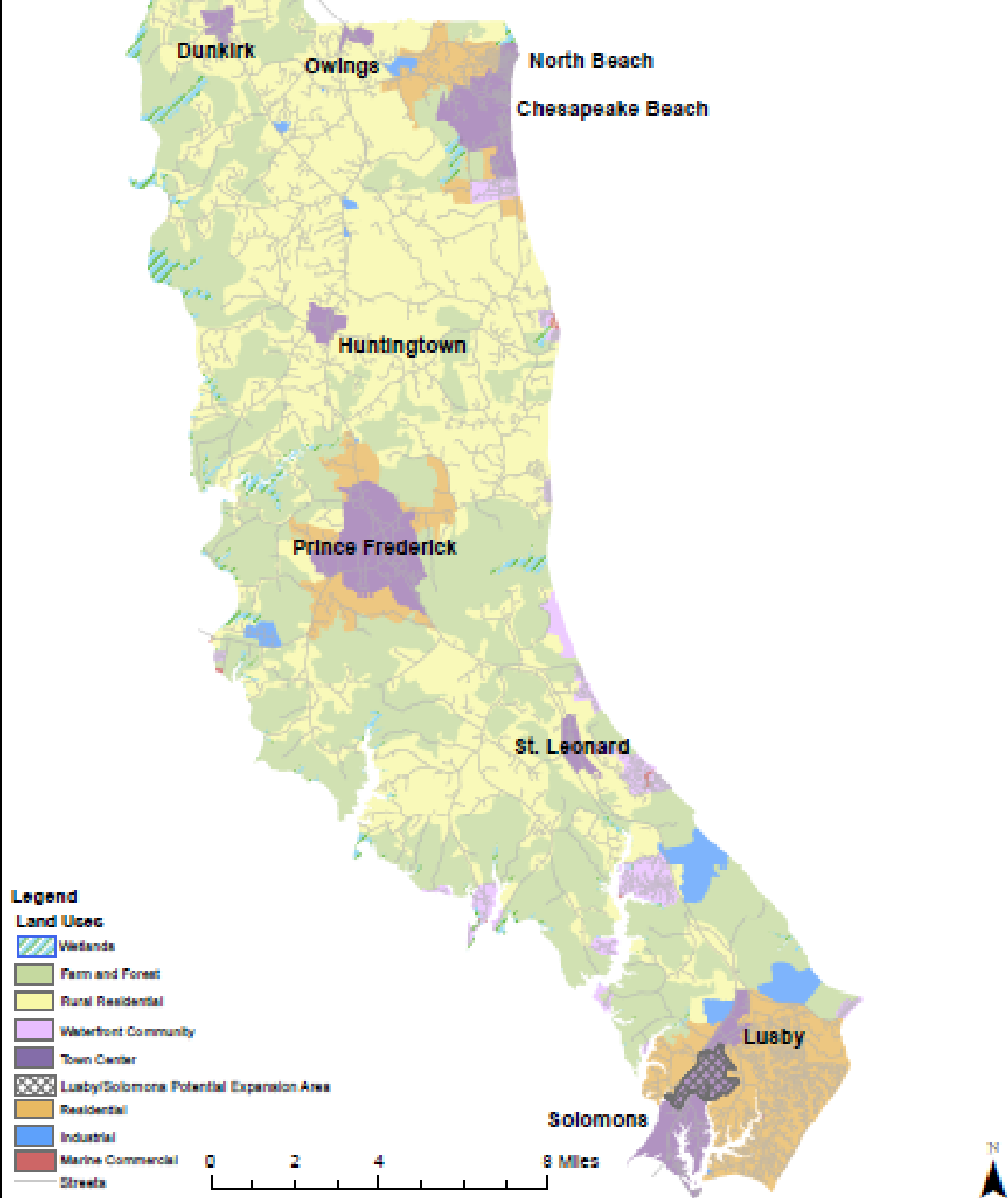


## Appendix E



**Appendix F-1**

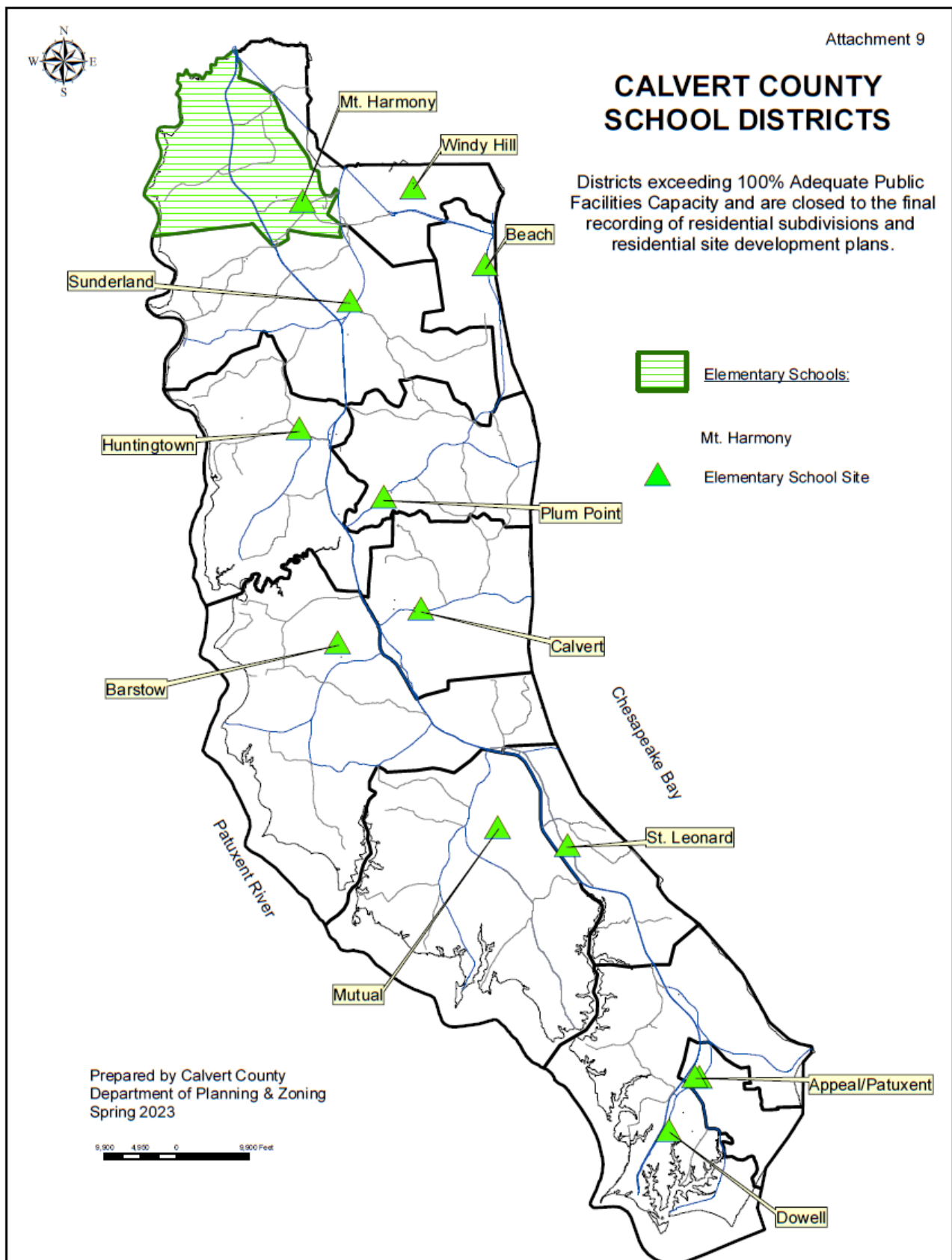
# CALVERT COUNTY, MD Future Land Use

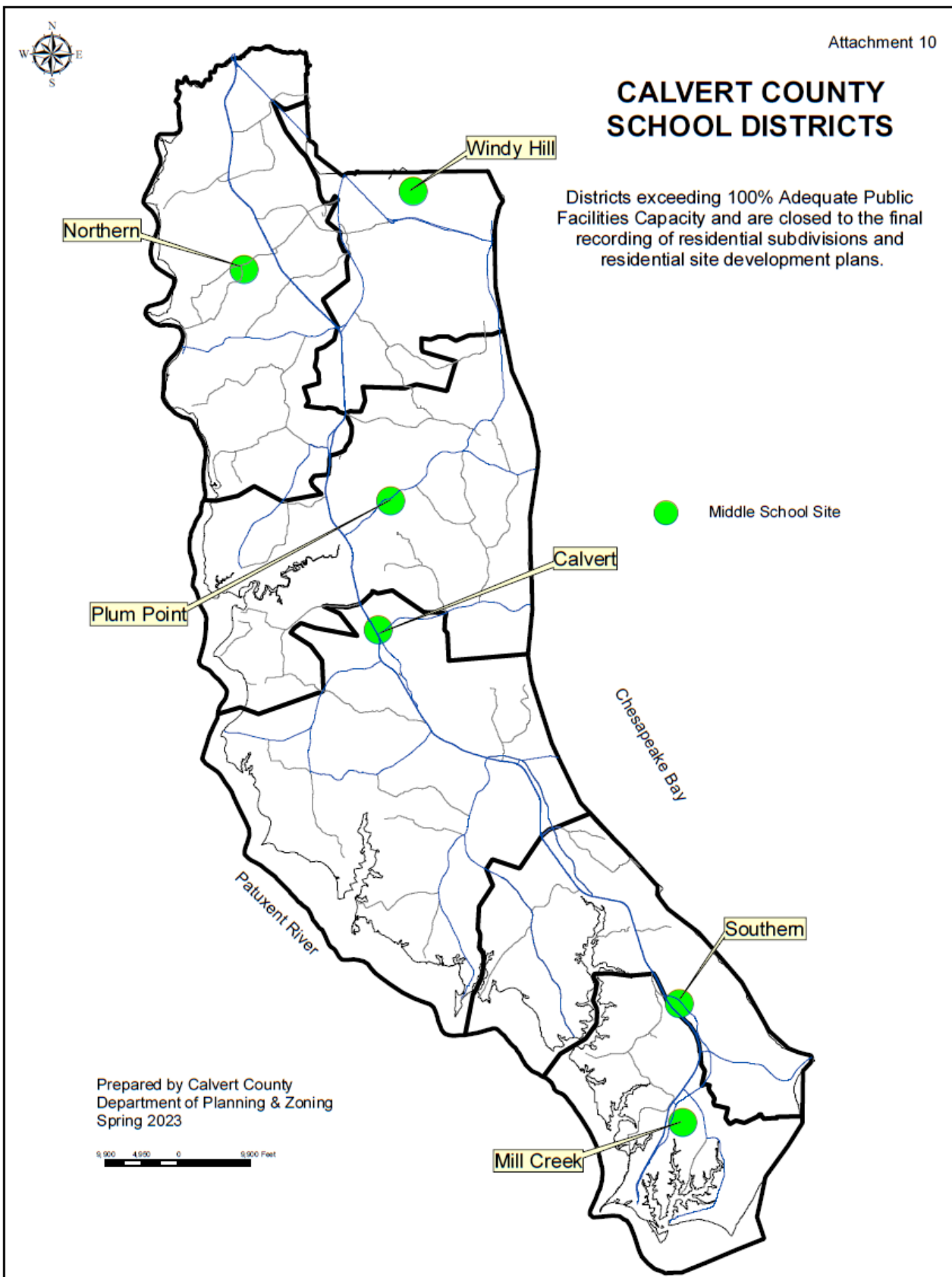


Appendix F-2

## CALVERT COUNTY SCHOOL DISTRICTS

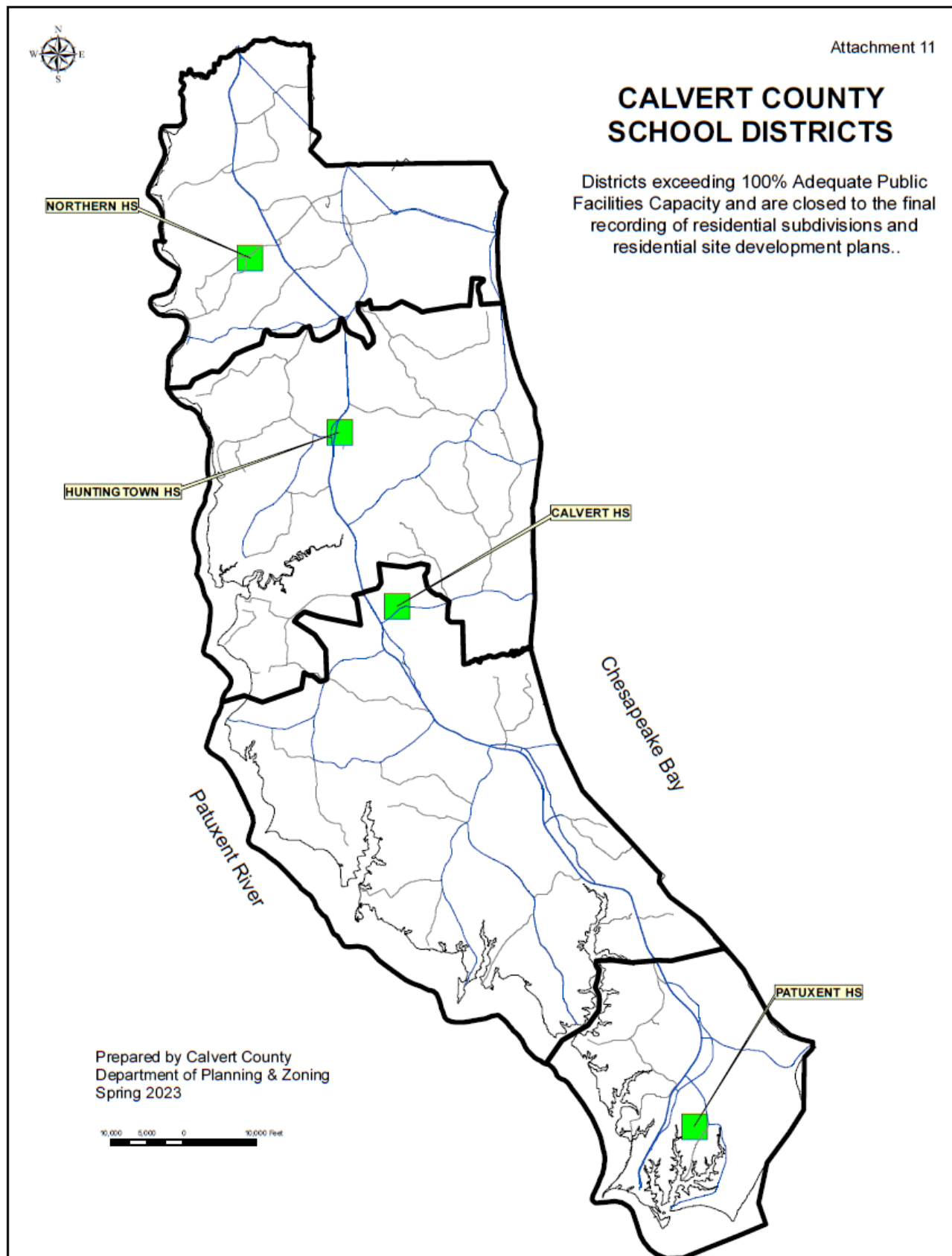
Districts exceeding 100% Adequate Public Facilities Capacity and are closed to the final recording of residential subdivisions and residential site development plans.





## CALVERT COUNTY SCHOOL DISTRICTS

Districts exceeding 100% Adequate Public Facilities Capacity and are closed to the final recording of residential subdivisions and residential site development plans..



# Calvert County Public Schools

## Existing Feeder Plan

Mt. Harmony/Sunderland/Huntingtown Elementary



Northern Middle

Windy Hill/Beach/Sunderland Elementary



Windy Hill Middle

Huntingtown/Beach/Plum Point/Calvert Elementary



Plum Point Middle

Barstow/Calvert/Mutual/St. Leonard Elementary



Calvert Middle

Mutual/St. Leonard/Appeal/Dowell/Patuxent Elementary



Southern Middle

Appeal/Dowell/Patuxent



Mill Creek Middle

Windy Hill Middle/Northern Middle



Northern High

Plum Point Middle/Calvert Middle/Northern Middle



Huntingtown High

Calvert Middle/Southern Middle



Calvert High

Southern Middle/Mill Creek Middle



Patuxent High School

Effective School Year 2015-2016

## Appendix J

**FORMER SCHOOL INVENTORY****FACILITIES INVENTORY**LEA: Calvert CountyDATE: 4/29/2023

SCHOOL NAME & ADDRESS	GRADE S	SRC	PRIOR FALL ENRLMT	% UTIL	ACREAG E	BUILDING DATE		PHYS. COND.	COMMENTS
			9/10			DATE	SQ.FT.		
Brooks Administration Building 1305 Dares Beach Road Prince Frederick, MD 20678	Admin	---	---	100%	8.45		36,852	Good	
Calvert Middle School 435 Solomons Island Road N Prince Frederick, MD 20678	-	-	-	-	-	-	-	-	Facility closed June 2010. Property and improvements transferred to local government.
Calvert High School 520 Fox Run Boulevard Prince Frederick, MD 20678	-	-	-	-	-	-	-	-	Facility Closed June 2012. New Facility opened March 2014
Hunting Creek Annex 4105 Old Town Road Huntingtown, MD 20639	-	-	-	-	-	-	-	-	Facility closed in 2018. Programs moved to Calvert Country School. Property and improvements transferred to local government.

**Appendix K**

**Policy Statement #1730 (Administration) of the Board of Education  
Regarding Disposal of Surplus and Obsolete Property**

- I. Purpose
  - A. To provide an efficient and effective process for the disposal of surplus and obsolete property
- II. Policy Statement
  - A. The Board of Education is committed to the operation of a cost efficient and up-to-date school system and therefore duly authorizes the Superintendent of Schools to act on its behalf to dispose of surplus or obsolete property by sale, exchange, donation, recycling, or other means which, in the judgment of the Superintendent of Schools, is in the best interest of the school system while striving to have the least impact on the environment as possible. This policy shall not apply to real estate, land, or buildings.
- III. Delegation of Authority
  - A. The Superintendent is directed to develop administrative procedures to implement this policy in accordance with all local policies and local, state and federal laws and regulations and to communicate this policy and accompanying procedures to all relevant parties.
- IV. Exceptions
  - A. There are no exceptions to this policy. However, the Board, by majority vote, may temporarily suspend all or part of this policy. Suspension of all or part of this policy, however, in no way relieves the Board of its obligation to comply with pertinent local, state and federal laws and regulations or the rules and regulations of the State Board of Education and the Maryland State Department of Education.
- V. Review
  - A. This policy will be reviewed at the end of four years, or sooner, if approved by majority vote of the Board of Education in public session.
- VI. Effective Date
  - A. This policy is effective April 21, 2023.

**Citations**

State Law:

State Reg.:

Federal Law:

Adm. Reg.:

Neg. Agr.:

Administration #1730

Originally Adopted: 3/9/78

Revised: 4/14/05; 4/10/08; 12/9/10; 12/11/14; 4/11/19; 4/21/23

Page 106 of 193

**Appendix L**

**Administrative Procedures for Policy #1730 (Administration)  
Regarding Disposal of Surplus and Obsolete Property**

**I. General**

- A. All equipment, furniture, textbooks, and other property purchased by or donated to the Calvert County Public Schools shall be inspected periodically by the Superintendent or his/her designee to determine the condition and continued need for such property. This procedure shall not apply to real estate, land, or facilities.
- B. Property, which is obsolete, surplus, or in need of repair will be evaluated by the Superintendent or his/her designee for disposition as follows:
  - 1. Repairs to furniture or equipment which can be carried out in a cost-effective manner will be conducted under the direction of the Director of School Facilities or designee. School principals shall be responsible for monitoring their own building's furnishings.
  - 2. Disposal of textbooks and other property used in the CCPS instructional program will be conducted under the direction of the Assistant Superintendent of Instruction or designee.
  - 3. Disposal of computer hardware will be conducted under the direction of the Director of Information Technology or designee.
  - 4. Disposal of property not used in the instructional program will be conducted under the direction of the Director of School Facilities or designee.
  - 5. Items deemed to have sale value other than for scrap metal shall be held for sale by auction, advertised sale, bid, or other method approved by the Superintendent or designee. If not sold by a designated date, all salvageable parts will be removed, and the remaining portion will be disposed of under the County ordinance governing landfill or recycling operations.
  - 6. Scrap metal shall be sold to scrap metal dealers.
  - 7. Proceeds from the sale of surplus and obsolete property shall be deposited in the appropriate equipment replacement fund.
  - 8. When disposing of property deemed to have no value, such property will be recycled whenever possible.

**II. Request for Disposal of Non-Instructional Equipment and Furniture**

Administration 1730.1

Procedures Written: 3/9/78; 1/11/07; 9/4/08; 3/14/11; 12/17/14; 9/25/19; 4/21/2023

Page **107** of **193**

- A. Schools or departments requesting disposal of equipment must complete the Non-Instructional Equipment Disposal Form and simultaneously submit a work order requesting disposal of unwanted equipment.
  - B. The school principal or department director must sign the Non-Instructional Equipment Disposal Form.
  - C. The signed Non-Instructional Equipment Disposal Form must be submitted to the Supervisor of Operations for review and approval. The Supervisor of Operations shall review the request and make a recommendation to the Director of School Facilities regarding the disposition of the equipment.
  - D. The Director of School Facilities must approve the recommendation.
  - E. The work order will be executed once all approvals have been obtained.
  - F. Following completion of the work order, the Director of School Facilities will note the disposition of the equipment on the Equipment Disposal Form and a copy will be sent to the Department of Finance for adjustments to CCPS inventory records as necessary.
- III. Request for Disposal of Textbooks and other Instructional Property
- A. Schools or departments requesting disposal of textbooks and other instructional property must complete the Textbook and Other Instructional Property Disposal Form and simultaneously submit a work order requesting disposal of the unwanted textbooks or other property.
  - B. The school principal must sign the Textbook and Other Instructional Property Disposal Form.
  - C. The signed Textbook and Other Instructional Property Disposal Form must be submitted to the appropriate Instructional Supervisor for review and approval. The Supervisor of Instruction shall review the request and make a recommendation to the Chief Academic Officer or designee regarding the disposition of the materials and/or equipment.
  - D. The Chief Academic Officer or designee must approve the recommendation prior to disposal of the materials or equipment.
  - E. The work order will be executed once all approvals have been obtained.
  - F. Following completion of the work order, a copy of the appropriate form will be sent to the Department of Finance for adjustments to CCPS inventory records as necessary.
- IV. Request for Disposal of Computer Hardware
- A. Schools or departments requesting disposal of computer hardware must complete a help desk ticket requesting disposal.

Administration 1730.1

Procedures Written: 3/9/78; 1/11/07; 9/4/08; 3/14/11; 12/17/14; 9/25/19; 4/21/2023

Page **108** of **193**

Calvert County Public Schools  
1305 Dares Beach Road  
Prince Frederick, MD 20678

**Administrative Procedures for Policy #1510 (Administration) of the Board of Education  
Regarding School Closings, Delayed Openings,  
and Early Dismissals Due to Emergencies**

**Notification Chain Procedures**

- I. Calvert County Public Schools will maintain or contract for an emergency notification system capable of notifying stakeholders of changes to the planned school calendar.
- II. The Superintendent or his/her designee will determine when to activate the emergency notification system.
- III. Principals and Directors will familiarize their staff with Procedure 1510.3 Regarding School Closings, Delayed Openings and Early Dismissals.
  - A. The Director of Transportation and/or designee will annually update and disseminate an emergency phone notification chain to serve as a back-up to the emergency notification system used to inform administrative staff of school and/or work schedule changes. Principals and Directors are responsible for further notification of their staff members.
  - B. A principal or director who is on planned leave is responsible for notifying the principal or director above him/her on the notification chain of the name and telephone contact information of the vice-principal or designee within the department to call in his/her absence. This is to ensure the continuity of communication within the notification chain.
- IV. The Director of Transportation and/or designee will maintain a separate phone notification chain in order to notify public safety agencies, state and county maintenance, non-public special education facilities and local private schools which provide their own transportation of CCPS closings, delayed openings and early dismissals due to emergency.

Administration 1510.2

Policy Originally Adopted: 2/10/00

Procedures Revised: 10/23/00; 4/14/05; 10/23/07; 3/13/08; 1/13/11; 2/3/14; 7/11/19

Page 1 of 1

**Appendix M**

**Administrative Procedures for Policy #1510 (Administration) of the Board of Education  
Regarding School Closings, Delayed Opening and Early Dismissals Due to Emergencies**

- I. Employee Working Hours during Emergency School Closings, Delayed School Openings, and Early School Dismissals
  - A. The Superintendent of Schools or his/her designee will determine when schools will be closed for emergency purposes.
  - B. In instances of inclement weather, the Director of Transportation will collect information and make a recommendation to the Superintendent regarding the status of schools. The Director of Transportation shall consult the Director of School Facilities as part of this process.
  - C. In instances of activation of the county government's Emergency Operations Center, the CCPS representative will inform the Superintendent and/or designee of information pertaining to the schools and community.
  - D. When schools are to be closed, the office of the Superintendent, in cooperation with the department heads that may be involved, may prepare a statement for dissemination to the public. The statement shall include the purpose of the emergency closing, the time limits prescribed, and the order in which the closing is to proceed.
  - E. If on a given day schools have a scheduled two-hour early dismissal and a two-hour delayed opening is announced, then students will NOT be dismissed early and will remain in school until the end of their regular school day.
- II. These procedures set forth the employee working hours during emergency school closings, delayed school openings, and early school dismissals. Codes have been developed and defined below.
  - A. The following positions are designated as emergency personnel and these staff members are to report to work as noted in the Code descriptions below.
    - 1. Superintendent and/or his/her designee
    - 2. Designated emergency maintenance staff
    - 3. School Facilities supervisory personnel
    - 4. Transportation supervisory personnel
    - 5. Building Services Manager and Building Services Assistant Manager at all buildings
- III. Employee Working Hours During Inclement Weather and Other Emergency Conditions

Administration 1510.3

Revised: 10/23/00; 4/14/05; 11/1/06; 2/1/07; 10/16/07; 3/10/09; 3/1/10, 1/13/11, 2/4/14; 10/13/14; 12/21/16; 4/18/18; 7/9/19; 12/2/21

Page 1 of 3

**Appendix N**

A. WHEN SCHOOLS ARE CLOSED (Codes white, red, yellow, and green are only used when schools are closed for students.)

1. Code White: A Code White is called when conditions are not safe for any employee to attempt to report to work. Safety concerns may include road conditions or conditions at CCPS facilities including school buildings. No employees are to report to work when a Code White is called.
  - a. No employees report. (Code White)
2. Code Red: A Code Red is called when conditions are not safe for non-emergency personnel to report to work. Safety concerns may include road conditions or conditions at CCPS facilities including school buildings. Non-emergency employees are not to report to work when a Code Red is called.
  - a. All emergency personnel report as usual. (Code Red)
  - b. All other personnel do not report to work.
3. Code Yellow: A Code Yellow is called when conditions may be dangerous but are anticipated to improve so as to allow employees to safely get to work.
  - a. Designated emergency personnel will report to work on time.
  - b. The 12-month non-emergency school-based employee work hours will be 9:00 a.m. – 3:30 p.m.
  - c. Liberal Leave is in effect. Employees must notify their immediate supervisor.
  - d. Afternoon/Evening activities are canceled.
  - e. Child Care is Closed.
  - f. Schools closed for all students and 10- and 11-month employees
4. Code Green: A code green is called when students are not reporting to school due to inclement weather, but conditions are safe for employees to report at the normal time.
  - a. All emergency personnel report as usual.
  - b. All 12-month employees report on time (Code Green).
  - c. Liberal leave is in effect. Employees must notify their immediate supervisor.
  - d. Schools closed for all students and 10- and 11-month employees.

IV. WHEN SCHOOLS ARE DELAYED OR WHEN THERE IS AN EARLY DISMISSAL

- A. Typically, a two-hour delay or two-hour early release will be used when conditions warrant. In unusual circumstances, other schedules such as a three-hour delay or three-hour early dismissal may be used at the Superintendent's discretion.
1. Two-Hour Delayed Opening

Administration 1510.3

Revised: 10/23/00; 4/14/05; 11/1/06; 2/1/07; 10/16/07; 3/10/09; 3/1/10, 1/13/11, 2/4/14; 10/13/14; 12/21/16; 4/18/18; 7/9/19; 12/2/21

Page 2 of 3

- a. School opening will be delayed 2 hours.
- b. 12-month certificated employees, including emergency personnel, report on time. 12-month educational support staff may report up to one hour late.
- c. No Child Nutrition Workers are to report prior to 8:00 a.m.
- d. The workday for 10- and 11-month employees will begin two hours after their regularly scheduled start time.

B. Early Dismissals

1. Two-Hour Early Dismissal

- a. Schools closed two hours early.
- b. 12-month personnel, including emergency personnel, will work regular hours unless released by the Superintendent or his/her designee.
- c. 10- and 11-month employees will be released two hours before their regularly scheduled end time of their contractual workday.

C. One-Hour Early Dismissal

- a. Schools closed one hour early.
- b. 12-month personnel, including emergency personnel, will work regular hours unless released by the Superintendent or his/her designee.
- c. 10- and 11-month employees will be released one hour before their regularly scheduled end time of their contractual workday.

V. Liberal Leave Policy

- A. Employees are granted leave without prior written notification or requests being made. Employees must notify their supervisor and complete any necessary leave slips upon their return to work.

## SCHOOL FACILITY

*Appeal Elementary School  
11655 H. G. Trueman Road  
Lusby, MD 20657*

Building Area	59,275 sq. ft.
Number of Floors	1
Program	PreK – K
Teaching Stations	10
Special Education	4
Total Teaching Stations	14
Rated Capacity	254
Age of Structure	Constructed 1949
Renovations and Additions	1956, 1958, 1971, 1988, 2005
General Structure	Masonry Non-com. 1949 Section Wood Trusses. B.U.R.
Heating / Air Conditioning	AHU's & RTU's w/DX., Oil-fired boiler. No chiller.
Fire Suppression	100%
Total Site Area	26.4 acres (shared with Patuxent Elementary)
Amount of Site Activity Area	6.5 acres
Water	Private well and public for fire suppression
Sewer	Public
Community Outlook	Growth Area, Lusby Town Center

## Appendix O

**THIS PAGE LEFT BLANK**

## SCHOOL FACILITY

*Barstow Elementary School  
295 J. W. Williams Road  
Prince Frederick, MD 20678*

Building Area	75,635
Number of Floors	2
Program	PreK-5
Teaching Stations	28
Special Education	4
Total Teaching Stations	32
Rated Capacity	674
Age of Structure	Constructed 2008
Renovations and Additions	None
General Structure	Brick & Concrete Block Masonry, Non-Com., B.U.R.
Heating / Air Conditioning	Geothermal System
Fire Suppression	100%
Total Site Area	22 acres
Amount of Site Activity Area	13 acres
Water	Public
Sewer	Public
Community Outlook	Growth Area, Prince Frederick Town Center

**THIS PAGE LEFT BLANK**

**THIS PAGE LEFT BLANK**

**THIS PAGE LEFT BLANK**

## SCHOOL FACILITY

*Beach Elementary School  
7900 Old Bayside Road  
Chesapeake Beach, MD 20732*

Building Area	55,341 sq. ft.
Number of Floors	1
Program	PreK-5
Teaching Stations	19
Special Education	4
Total Teaching Stations	23
Rated Capacity	471
Age of Structure	Constructed 1953
Renovations and Additions	1971, 1981, 2006
General Structure	Masonry, Non-Com., B. U. R.
Heating / Air Conditioning	AHU's & RTU's w/Dx., Oil-fired boilers
Fire Suppression	60%
Total Site Area	17.99 acres
Amount of Site Activity Area	7 acres
Water	Town of Chesapeake Beach
Sewer-	Town of Chesapeake Beach
Community Outlook	Growth Area, Town of Chesapeake Beach

**THIS PAGE LEFT BLANK**

## SCHOOL FACILITY

*Calvert Elementary School  
1450 Dares Beach Road  
Prince Frederick, MD 20678*

Building Area	63,362 sq. ft.
Number of Floors	1
Program	PreK-5
Teaching Stations	24
Special Education	5
Total Teaching Stations	29
Rated Capacity	596
Age of Structure	Constructed 1964
Renovations and Additions	1974, 1981, 2007
General Structure	Masonry, Non-Com., B.U.R.
Heating / Air Conditioning	AHU's & RTU's w/Dx., Gas fired boiler, Chiller
Fire Suppression	0%
Total Site Area	18.2 acres
Amount of Site Activity Area	7 acres
Water	Private Well
Sewer	Public
Community Outlook	Growth Area, Prince Frederick Town Center

**THIS PAGE LEFT BLANK**

## SCHOOL FACILITY

*Dowell Elementary School  
12680 H. G. Trueman Road  
Lusby, MD 20657*

Building Area	70,435 sq. ft.
Number of Floors	2
Program	PreK-5
Teaching Stations	25
Special Education	6
Total Teaching Stations	31
Rated Capacity	628
Age of Structure	Constructed 1999
Renovations and Additions	2007
General Structure	Masonry, Non-Com., B.U.R.
Heating / Air Conditioning	AHU's, Gas-fired boiler, Chiller
Fire Suppression	100%
Total Site Area	19 acres
Amount of Site Activity Area	TBD acres
Water	Public
Sewer	Public
Community Outlook	Growth Area, Solomons Town Center

**THIS PAGE LEFT BLANK**

## SCHOOL FACILITY

*Huntingtown Elementary School  
4345 Huntingtown Road  
Huntingtown, MD 20639*

Building Area	62,070 sq. ft.
Number of Floors	1
Program	PreK-5
Teaching Stations	23
Special Education	3
Total Teaching Stations	26
Rated Capacity	553
Age of Structure	Constructed 1971
Renovations and Additions	1980, 2006
General Structure	Masonry, Non-Com., B.U.R.
Heating / Air Conditioning	RTU's w/DX., Oil fired boiler
Fire Suppression	100%
Total Site Area	21 acres
Amount of Site Activity Area	11 acres
Water	Private Well
Sewer	Septic System
Community Outlook	Stabilized area, Huntingtown Town Center

**THIS PAGE LEFT BLANK**

## SCHOOL FACILITY

*Mt. Harmony Elementary School  
900 West Mt. Harmony Road  
Owings, MD 20736*

Building Area	53,069 sq. ft.
Number of Floors	1
Program	K-5
Teaching Stations	26
Special Education	1
Total Teaching Stations	27
Rated Capacity	604
Age of Structure	Constructed 1961
Renovations and Additions	1970, 1975, 2007
General Structure	Masonry, Non-Com., B.U.R.
Heating / Air Conditioning	RTU's w/DX., Oil fired boiler
Fire Suppression	0%
Total Site Area	15 acres
Amount of Site Activity Area	10 acres
Water	Private Well
Sewer	Septic System
Community Outlook	Growth Area

**THIS PAGE LEFT BLANK**

## SCHOOL FACILITY

*Mutual Elementary School  
1455 Ball Road  
Port Republic, MD 20676*

Building Area	62,824 sq. ft.
Number of Floors	1
Program	K-5
Teaching Stations	20
Special Education	6
Total Teaching Stations	25
Rated Capacity	494
Age of Structure	Constructed 1975
Renovations and Additions	1989, 2007
General Structure	Masonry, Non-Com., B.U.R.
Heating / Air Conditioning	AHU's & RTU's w/Dx., Oil fired boilers
Fire Suppression	100%
Total Site Area	26 acres
Amount of Site Activity Area	5 acres
Water	Private Well
Sewer	Septic System
Community Outlook	Stabilized Area

**THIS PAGE LEFT BLANK**

## SCHOOL FACILITY

*Patuxent Elementary School  
35 Appeal Lane  
Lusby, MD 20657*

Building Area	59,049 sq. ft.
Number of Floors	1
Program	1-5
Teaching Stations	21
Special Education	7
Total Teaching Stations	28
Rated Capacity	553
Age of Structure	Constructed 1992
Renovations and Additions	2006
General Structure	Masonry, Non-Com., Architectural Metal Panel and Membrane Roof
Heating / Air Conditioning	AHU's, Oil fired boiler, Chiller
Fire Suppression	100%
Total Site Area	26.4 acres (shared with Appeal Elementary)
Amount of Site Activity Area	9.6 acres
Water	Private Well
Sewer	Public
Community Outlook	Growth Area, Lusby Town Center

**THIS PAGE LEFT BLANK**

## SCHOOL FACILITY

*Plum Point Elementary School  
1245 Plum Point Road  
Huntingtown, MD 20639*

Building Area	62,337 sq. ft.
Number of Floors	1
Program	PreK-5
Teaching Stations	26
Special Education	3
Total Teaching Stations	29
Rated Capacity	625
Age of Structure	Constructed 1991
Renovations and Additions	2006
General Structure	Masonry, Non-Com., Architectural Metal Panel and Membrane Roof
Heating / Air Conditioning	AHU's, Oil fired boiler, Chiller
Fire Suppression	100%
Total Site Area	191 acres (shared with Plum Point Middle)
Amount of Site Activity Area	20 acres
Water	Private Well
Sewer	Septic System
Community Outlook	No Growth Area

**THIS PAGE LEFT BLANK**

## SCHOOL FACILITY

*St. Leonard Elementary School  
5370 St. Leonard Road  
St. Leonard, MD 20685*

Building Area	71,680 sq. ft.
Number of Floors	2
Program	PreK-5
Teaching Stations	25
Special Education	4
Total Teaching Stations	28
Rated Capacity	585
Age of Structure	Constructed 1996
Renovations and Additions	2006
General Structure	Masonry, Non-Com., B.U.R.
Heating / Air Conditioning	AHU's, Oil fired boiler, Chiller
Fire Suppression	100%
Total Site Area	28 acres
Amount of Site Activity Area	15 acres
Water	Public
Sewer	Septic System
Community Outlook	Stabilized Area, St. Leonard Town Center

**THIS PAGE LEFT BLANK**

## **SCHOOL FACILITY**

*Sunderland Elementary School  
150 Clyde Jones Road  
Sunderland, MD 20689*

Building Area	69,494 sq. ft.
Number of Floors	2
Program	Pre-K-5
Teaching Stations	30
Special Education	2
Total Teaching Stations	32
Rated Capacity	700
Age of Structure	Constructed 1988
Renovations and Additions	2005
General Structure	Masonry, Non-Com., Architectural Metal Panel and Membrane Roof
Heating / Air Conditioning	AHU's, Oil fired boiler, Chiller
Fire Suppression	100%
Total Site Area	9.623 acres
Amount of Site Activity Area	9.623 acres
Water	Private Well
Sewer	Septic System
Community Outlook	Stabilized Area

**THIS PAGE LEFT BLANK**

## SCHOOL FACILITY

*Windy Hill Elementary School  
9550 Boyd's Turn Road  
Owings, MD 20736*

Building Area	66,126 sq. ft.
Number of Floors	1
Program	PreK-5
Teaching Stations	30
Special Education	2
Total Teaching Stations	32
Rated Capacity	703
Age of Structure	Constructed 1996
Renovations and Additions	2006
General Structure	Masonry, Non-Com., Architectural Metal Panel and Membrane Roof
Heating / Air Conditioning	AHU's, Oil fired boiler, Chiller
Fire Suppression	100%
Total Site Area	16 acres
Amount of Site Activity Area	15 acres
Water	Public
Sewer	Septic System
Community Outlook	Growth Area, Town of Chesapeake Beach

**THIS PAGE LEFT BLANK**

## SCHOOL FACILITY

*Calvert Country School  
1350 Dares Beach Road  
Prince Frederick, MD 20678*

Building Area	33,148 sq. ft.
Number of Floors	1
Program	Serves Special needs Children K-12+
Teaching Stations	0
Special Education	18 (Flexible Spaces)
Total Teaching Stations	18
Rated Capacity	120
Age of Structure	Constructed 1958
Renovations and Additions	1983
General Structure	Masonry Non-Com., B.U.R.
Heating / Air Conditioning	AHU's, Gas-fired boiler
Fire Suppression	0%
Total Site Area	14.82 acres
Amount of Site Activity Area	12 acres
Water	Private Well
Sewer	Public
Community Outlook	Growth Area, Prince Frederick Town Center

**THIS PAGE LEFT BLANK**

## SCHOOL FACILITY

*Calvert Middle School  
655 Chesapeake Blvd.  
Prince Frederick, MD 20678*

Building Area	104,005 sq. ft.
Number of Floors	2
Program	6-8
Teaching Stations	37
Special Education	4
Total Teaching Stations	41
Rated Capacity	784
Age of Structure	Constructed 2010
Renovations and Additions	Brick and Concrete Block Masonry, Non-com, and B.U.R.
General Structure	Geothermal
Heating / Air Conditioning	100%
Fire Suppression	100%
Total Site Area	83.3 acres shared with Calvert High School
Amount of Site Activity Area	11 acres
Water	Public
Sewer	Public
Community Outlook	Growth Area, Prince Frederick Town Center

**THIS PAGE LEFT BLANK**

**THIS PAGE LEFT BLANK**

**THIS PAGE LEFT BLANK**

## SCHOOL FACILITY

*Mill Creek Middle School  
12200 Southern Connector Blvd.  
Lusby, MD 20657*

Building Area	101,300 sq. ft.
Number of Floors	2
Program	6-8
Teaching Stations	30
Special Education	3
Total Teaching Stations	34
Rated Capacity	756
Age of Structure	Constructed 2000
Renovations and Additions	None
General Structure	Masonry Non-Com., B.U.R.
Heating / Air Conditioning	Geothermal System
Fire Suppression	100%
Total Site Area	34 acres
Amount of Site Activity Area	30 acres
Water	Public
Sewer	Public
Community Outlook	Growth Area, Lusby Town Center

**THIS PAGE LEFT BLANK**

## SCHOOL FACILITY

*Northern Middle School  
2954 Chaneyville Road  
Owings, MD 20736*

Building Area	88,780 sq. ft.
Number of Floors	1
Program	6-8
Teaching Stations	25
Special Education	4
Total Teaching Stations	29
Rated Capacity	680
Age of Structure	Constructed 1976
Renovations and Additions	None
General Structure	Masonry Non-Com., B.U.R.
Heating / Air Conditioning	Oil-fired boiler, central air
Fire Suppression	100%
Total Site Area	112.92 acres (shared with Northern High School)
Amount of Site Activity Area	25 acres
Water	Private Well (shared with Northern High School)
Sewer	Sewage Treatment Plant (shared with Northern High School)
Community Outlook	Growth Area, Dunkirk Town Center

**THIS PAGE LEFT BLANK**

## SCHOOL FACILITY

*Plum Point Middle School  
1475 Plum Point Road  
Huntingtown, MD 20639*

Building Area	101,300 sq. ft.
Number of Floors	3
Program	6-8
Teaching Stations	29
Special Education	3
Total Teaching Stations	32
Rated Capacity	760
Age of Structure	Constructed 1992
Renovations and Additions	None
General Structure	Masonry Non-Com., Architectural Metal Panel and Membrane Roof
Heating / Air Conditioning	AHU's, Oil-fired boiler, chiller
Fire Suppression	100%
Total Site Area	191 acres (shared with Plum Point Elementary School)
Amount of Site Activity Area	22 acres
Water	Private Well
Sewer	Septic System
Community Outlook	Growth Area

**THIS PAGE LEFT BLANK**

**THIS PAGE LEFT BLANK**

**THIS PAGE LEFT BLANK**

## SCHOOL FACILITY

*Southern Middle School  
9615 H. G. Trueman Road  
Lusby, MD 20657*

Building Area	106,260 sq. ft.
Number of Floors	1
Program	6-8
Teaching Stations	31
Special Education	3
Total Teaching Stations	34
Rated Capacity	795
Age of Structure	Constructed 1979
Renovations and Additions	1996
General Structure	Masonry Non-Com., B.U.R.
Heating / Air Conditioning	AHU's, Gas-fired boiler, chiller
Fire Suppression	100%
Total Site Area	26.04 acres
Amount of Site Activity Area	14.36 acres
Water	Private Well
Sewer	Septic System
Community Outlook	Growth Area, Lusby Town Center

**THIS PAGE LEFT BLANK**

## SCHOOL FACILITY

*Windy Hill Middle School  
9560 Boyd's Turn Road  
Owings, MD 20736*

Building Area	101,300 sq. ft.
Number of Floors	2
Program	6-8
Teaching Stations	29
Special Education	3
Total Teaching Stations	32
Rated Capacity	760
Age of Structure	Constructed 1988
Renovations and Additions	None
General Structure	Masonry Non-Com., B.U.R.
Heating / Air Conditioning	RTU's, Oil-fired boiler, chiller
Fire Suppression	100%
Total Site Area	24 acres
Amount of Site Activity Area	23 acres
Water	Public
Sewer	Public
Community Outlook	Growth Area, Town of Chesapeake Beach

**THIS PAGE LEFT BLANK**

**THIS PAGE LEFT BLANK**

**THIS PAGE LEFT BLANK**

## SCHOOL FACILITY

*Calvert High School  
520 Fox Run Blvd.  
Prince Frederick, MD 20678*

Building Area	236,300 sq. ft.
Number of Floors	2 (partial ground floor section)
Program	9-12
Teaching Stations	55
Special Education	4
Total Teaching Stations	59
Rated Capacity	1148
Age of Structure	Constructed 2013
Renovations and Additions	
General Structure	Steel & Masonry Non-Com., B.U.R.
Heating / Air Conditioning	AHU's, Gas-fired boiler, chiller
Fire Suppression	100%
Total Site Area	83.3 acres
Amount of Site Activity Area	60 acres
Water	Public
Sewer	Public
Community Outlook	Growth Area, Prince Frederick Town Center

**THIS PAGE LEFT BLANK**

**THIS PAGE LEFT BLANK**

**THIS PAGE LEFT BLANK**

## SCHOOL FACILITY

*Huntingtown High School  
4125 N. Solomons Island Road  
Huntingtown, MD 20639*

Building Area	206,248 sq. ft.
Number of Floors	3
Program	9-12
Teaching Stations	59
Special Education	2
Total Teaching Stations	61
Rated Capacity	1500
Age of Structure	Constructed 2004
Renovations and Additions	None
General Structure	Masonry Non-Com., B.U.R.
Heating / Air Conditioning	AHU's, Oil-fired boiler, chiller
Fire Suppression	100%
Total Site Area	89 acres
Amount of Site Activity Area	70 acres
Water	Private Well
Sewer	Public
Community Outlook	Stabilized Area, Huntingtown Town Center

**THIS PAGE LEFT BLANK**

**THIS PAGE LEFT BLANK**

**THIS PAGE LEFT BLANK**

## SCHOOL FACILITY

*Northern High School  
2950 Chaneyville Road  
Owings, MD 20736*

Building Area	248,973 sq. ft.
Number of Floors	3
Program	9-12
Teaching Stations	66
Special Education	4
Total Teaching Stations	70
Rated Capacity	1440
Age of Structure	Constructed 2020
Renovations and Additions	
General Structure	Steel Frame & Masonry Non-Com., B.U.R.
Heating / Air Conditioning	Geothermal System
Fire Suppression	100%
Total Site Area	112.92 acres (shared with Northern Middle)
Amount of Site Activity Area	80 acres
Water	Private Well shared with Northern Middle
Sewer	Sewage Treatment Plant shared with Northern Middle
Community Outlook	Growth Area, Dunkirk Town Center

**THIS PAGE LEFT BLANK**

**THIS PAGE LEFT BLANK**

**THIS PAGE LEFT BLANK**

**THIS PAGE LEFT BLANK**

**THIS PAGE LEFT BLANK**

**THIS PAGE LEFT BLANK**

**THIS PAGE LEFT BLANK**

## SCHOOL FACILITY

*Patuxent High School  
12485 Southern Connector Blvd.  
Lusby, MD 20657*

Building Area	185,900 sq. ft.
Number of Floors	3
Program	9-12
Teaching Stations	52
Special Education	3
Total Teaching Stations	55
Rated Capacity	1230
Age of Structure	Constructed 1996
Renovations and Additions	None
General Structure	Masonry Non-Com., B.U.R.
Heating / Air Conditioning	AHU's, Gas-fired boiler, chiller
Fire Suppression	100%
Total Site Area	73 acres
Amount of Site Activity Area	63 acres
Water	Public
Sewer	Public
Community Outlook	Growth Area, Lusby Town Center

**THIS PAGE LEFT BLANK**

**THIS PAGE LEFT BLANK**

**THIS PAGE LEFT BLANK**

## **SCHOOL FACILITY**

*Career and Technology Academy  
330 Dorsey Road  
Prince Frederick, MD 20678*

Building Area	113,354 sq. ft.
Number of Floors	2
Program	CTE – 10 – 12
Teaching Stations	36
Special Education	0
Total Teaching Stations	36
Rated Capacity	445
Age of Structure	Constructed 1970
Renovations and Additions	2005
General Structure	Steel Frame & Masonry Non-Com., B.U.R.
Heating / Air Conditioning	AHU's, Gas-fired boiler, chiller
Fire Suppression	100%
Total Site Area	7 acres
Amount of Site Activity Area	None
Water	Private Well
Sewer	Public
Community Outlook	Growth Area, Prince Frederick Town Center

**THIS PAGE LEFT BLANK**

**THIS PAGE LEFT BLANK**

**THIS PAGE LEFT BLANK**

Calvert County Public Schools  
1305 Dares Beach Road  
Prince Frederick, Maryland 20678

**Policy Statement #4400 (Supporting Services) of the Board of Education Regarding  
Educational Facilities Planning and School Geographical Attendance Areas**

**I. Purpose**

- A. To maintain throughout the county a reasonably uniform and efficient system of public schools that is designed to provide high quality education and equitable educational opportunity for all children
- B. To provide for the development of an educational facilities master plan that leads to the development of a capital improvement plan
- C. To establish a new public school or expand existing facilities if the Board of Education determines it is advisable
- D. To provide a process to be used in making decisions to consolidate and close schools
- E. To determine with the advice of the Superintendent the geographical attendance area for each school

**II. Definitions**

- A. Capital Improvement Plan – the annual Public School Construction Program submission outlining the funding requests for new school construction, renovations, and systemic improvement projects
- B. Educational Facility Master Plan – the annual Public School Construction Program submission which elaborates on the school system’s principles of planning and evaluating community needs, methods of instruction and educational objectives as they relate to school facilities (including schools and support facilities)
- C. Geographical Attendance Area – the current school attendance boundaries approved by the Board of Education that are used to determine the home school of attendance for students
- D. Overcrowded – the student enrollment at a school exceeds the school’s capacity to such a degree that one or more of the following conditions exist: school enrollment is beyond its State Rated Capacity; there are an insufficient number of general classroom places; the building core cannot support the school

Supporting Services #4400

Adopted: 1/11/07

Revised: 6/9/11; 6/12/14; 7/12/18; 6/10/21

Page 1 of 3

**Appendix P**

population; and/or school space is used for other than its usual intended purpose in order to deliver instruction

- E. Underutilized- the student enrollment at a school is below the school's capacity and is projected to remain at that low level for the foreseeable future to such a degree that it is programmatically and/or financially advisable to close the school

### III. Policy Statement

- A. The Board of Education recognizes its obligation to provide a reasonably uniform and efficient system of public schools that is designed to provide high quality education and equitable educational opportunity for all children. The Board fulfills this responsibility in part by ensuring the development of a well-designed, long-range educational facilities plan which is regularly reviewed and revised to meet the needs of high-quality educational programming, changing enrollment patterns, and geographic shifts in population. In addition, the Board strives to ensure that facilities are used efficiently and effectively.
- B. The Board recognizes that broad stakeholder input into the educational facilities planning process and the establishment of school geographical attendance areas is necessary for successful implementation of developed plans.
- C. The Board is committed to working with the Superintendent and appropriate local and state officials to secure the necessary resources to implement the educational facilities master plan.
- D. The Board will consider adjusting school geographical attendance areas when a school is constructed, closed, an addition to an existing school is constructed, when one or more schools are or are predicted to become overcrowded or underutilized, or when an emergency situation arises.
- E. When establishing the school geographical attendance areas, the Board will consider facility utilization, impact on educational programming, enrollment trends, student demographics, number of students from outside of the established school geographical attendance areas attending affected schools, transportation, cost, impact to communities and neighborhoods, and enrollment patterns among school levels. These factors are not listed in priority order, and, while each of these factors will be considered, it may be impractical to reconcile each and every school geographical attendance adjustment with each and every factor.

### IV. Delegation of Authority

Supporting Services #4400

Adopted: 1/11/07

Revised: 6/9/11; 6/12/14; 7/12/18; 6/10/21

Page 2 of 3

- A. The Superintendent of Schools is directed to develop administrative procedures to implement this policy in accordance with all local policies and local, state and federal laws and regulations and to communicate this policy and accompanying procedures to all relevant parties.
- V. Exceptions
  - A. There are no exceptions to this policy. However, the Board by majority vote may temporarily suspend all or part of this policy. Suspension of all or part of this policy, however, in no way relieves the Board of its obligation to comply with the pertinent local, state and federal laws and regulations and the rules and regulations of the Maryland State Board of Education and the Maryland State Department of Education.
- VI. Review
  - A. This policy will be reviewed at the end of four years, or sooner, if approved by majority vote of the Board of Education in public session.
- VII. Effective Date
  - A. This policy is effective June 10, 2021.

#### Citations

State Law: §§4-101, 4-108, and 4-109; 4-115, 4-120 Education Article, Annotated Code of Maryland  
State Reg.: COMAR 13A.02.09; 14.39.02.02  
Federal Law:  
Adm. Reg.:  
Neg. Agr.:  
Other Citation:

#### Related Policy

3925 Regarding Student Transfers

Supporting Services #4400  
Adopted: 1/11/07  
Revised: 6/9/11; 6/12/14; 7/12/18; 6/10/21  
Page 3 of 3

Calvert County Public Schools  
1305 Dares Beach Road  
Prince Frederick, MD 20678

**Administrative Procedures for Policy #4400 (Supporting Services)  
of the Board of Education  
Regarding Educational Facilities Planning and School Geographical Attendance Areas**

**I. Definitions**

- A. Capital Improvement Plan – the annual Public School Construction Program submission outlining the funding requests for new school construction, renovations, and systemic improvement projects
- B. Educational Facilities Master Plan – the annual Public School Construction Program submission which elaborates on the school system’s principles of planning and evaluating community needs, methods of instruction and educational objectives as they relate to school facilities (including schools and support facilities)
- C. Geographical Attendance Area – the current school attendance boundaries approved by the Board of Education that are used to determine the home school of attendance for students
- D. Overcrowded – the student enrollment at a school exceeds the school’s capacity to such a degree that one or more of the following conditions exist: the school enrollment is beyond its State Rated Capacity, there are an insufficient number of general classroom spaces, the building core cannot support the school population, school space is used for other than its usual intended purpose in order to deliver instruction.
- E. Underutilized- the student enrollment at a school is below the school’s capacity and is projected to remain at that low level for the foreseeable future to such a degree that it is programmatically and/or financially advisable to close the school

**II. Educational Facilities Master Plan**

- A. The Superintendent or designee shall annually develop an educational facilities master plan in accordance with COMAR 14.39.02.02.
- B. As per COMAR, the plan will include current and projected enrollment data. If this data indicates that school facility use, including renovations, additions, new construction, or program changes, may have the potential to require adjustments to school geographical attendance areas, the Superintendent will ensure that this is noted in the plan.

Supporting Services 4400.1  
Procedure Written: 4/18/07  
Procedure Revised: 10/11/11; 06/12/14; 4/23/21  
Page 1 of 5

- C. The Superintendent or designee shall present a proposed plan to the Board of Education for consideration. The Board shall make the proposed plan available for public comment for a minimum of four weeks.
- D. The Board will adopt a final plan and submit it to the Interagency Committee on Public School Construction for consideration.

### III. Capital Improvement Program

- A. The Superintendent or designee shall annually develop a capital improvement program which is consistent with the educational facilities master plan in accordance with COMAR 14.39.02.03. During the development of the program, the Superintendent or designee will communicate regularly with county staff.
- B. The Superintendent or designee shall present the proposed plan to the Board of Education for consideration. The Board shall make the proposed plan available for public comment for a minimum of four weeks.
- C. The Board will adopt a final plan and submit it to the Interagency Committee on Public School Construction for consideration.
- D. The Superintendent or designee will work to secure funding from the county and state governments for the projects in the program.

### IV. New School Site selection

- A. When it is determined that an additional school is needed and the state has approved funding for planning, the Superintendent or designee, in conversation with the Board of Education and County and State governmental agencies, will identify possible school locations.
- B. The Superintendent or designee will conduct preliminary negotiations on the purchase of real property. Final negotiations and purchase of real property for school facility construction will be conducted upon approval by the Board of Education.

### V. Facility Design

- A. For new construction projects or major facility renovations, the Superintendent will form a committee, which will include representatives from appropriate school system departments, schools, governmental agencies, and the community-at-large.
- B. The committee will develop a proposed educational specification for the facility.
- C. The proposed educational specification will be presented to the Board of Education for consideration. The Board will make the proposed plan available for public comment for

Supporting Services 4400.1

Procedure Written: 4/18/07

Procedure Revised: 10/11/11; 06/12/14; 4/23/21

Page 2 of 5

a minimum of four weeks before adopting a final plan.

VI. Geographical Attendance Areas

- A. The Board, with the advice of the Superintendent, will determine the geographical attendance area of each school.
- B. The Board may direct the Superintendent to develop a recommendation regarding changes to the geographical attendance areas to two or more schools when (as stipulated in Policy 4400):
  1. A new school constructed;
  2. A school is closed or schools are consolidated;
  3. An addition to an existing school is constructed;
  4. When one or more schools are or are predicted to become overcrowded or underutilized; or
  5. An emergency situation arises.
- C. In an emergency (e.g. fire, flood, safety hazard, natural disaster), the Superintendent will take immediate and temporary action until the Board meets to address the situation and adopts a plan of action to handle the emergency.
- D. When the situation is not an emergency and the Superintendent determines that redistricting is advisable, the Superintendent will initiate the redistricting process by recommending to the Board no later than September 15 that geographical attendance areas be changed for the following school year. If the Board approves the recommendation, the residents of Calvert County will be notified through regular school system communication channels.
- E. The Superintendent will form a committee to formulate draft geographical attendance area plans and will include the following members:
  1. The Director of Student Services (chair)
  2. PTA President or PTA representative of each school involved in the redistricting
  3. A member of the Citizen Advisory Committee
  4. A representative from the Calvert County Council of PTAs (this representative may not have a child attending one of the schools involved in the redistricting)
  5. Director of Planning & Zoning or designee

Supporting Services 4400.1

Procedure Written: 4/18/07


Procedure Revised: 10/11/11; 06/12/14; 4/23/21

Page 3 of 5

6. One principal to represent the schools involved
  7. One representative from the Department of Student Services
  8. One representative from the Department of Transportation
  9. The Director of Construction and/or the Director of School Facilities
- F. The advisory committee will meet approximately five (5) times over a 2-3 month period. The following items will be covered:
1. First Meeting – Review principles of establishing school geographical attendance areas as defined in Policy 4400
  2. Second Meeting - Form subcommittees to begin developing draft school geographical attendance areas
  3. Third Meeting – Subcommittees continue to work on draft plans
  4. Fourth Meeting – Subcommittees present possible plans to the committee at large
  5. Fifth Meeting – The committee as a whole will attempt to identify at least three draft plans, but in no case will identify less than two draft plans
- G. Per Policy 4400, the following factors, which are not listed in priority order, will be considered by the committee as it prepares the draft plans:
1. Facility utilization,
  2. Impact on educational programming,
  3. Enrollment trends,
  4. Student demographics,
  5. Number of students from outside of the established school geographical attendance areas attending affected schools,
  6. Transportation
  7. Cost
  8. Impact to communities and neighborhoods, and
  9. Enrollment patterns among school levels.
- H. The final report of the committee will address all nine factors listed above in each draft plan.

- I. The draft school geographical attendance area plans will be given to the Superintendent. The Superintendent will present to the Board in a regularly scheduled Work Session the plan(s) he or she deems effective. Once presented to the Board, copies of all proposals as well as the committee's final report will be posted on the school system's website, available in the school system's Central Office, forwarded to each affected school, and provided to any member of the public who has requested a copy.
  - J. After the presentation, the Board of Education will hold two public hearings. Each hearing will be advertised at least ten calendar days prior to the hearing and will be held at a school. The hearings will provide the public the opportunity to provide oral and written testimony. In addition to the hearings, the public will be given one month to submit written testimony. The committee will consider all comments and proposals, whether oral or written, in relation to the nine factors listed in VI.G. above.
  - K. At a regularly scheduled Business Meeting, the Board will adopt a school geographical attendance area plan. The adopted school geographical attendance areas may be identical to one of the draft plans, or it may be a modification developed by the Board. If a new area is introduced where the affected community has not been previously notified of the potential geographical attendance area change and did not have the opportunity to comment, an additional public hearing will be held.
  - L. The Board's final decision will be made no later than April 1, except in emergency situations.
  - M. The Director of Student Services will prepare maps and descriptions of the final geographical attendance areas and will distribute them to the affected schools.
- VII. School Closures and Consolidations (see COMAR 13A.02.09)
- A. When considering closing or consolidating a school, the Board shall direct the Superintendent to examine the feasibility of such action.
  - B. The Superintendent shall prepare reports as necessary to describe the proposed action.
  - C. The Board will comply with the requirements of COMAR 13A.02.09 regarding public review and comment before taking final action.

## Directory of Schools

Elementary		Middle	
<b><u>Barstow Elementary School</u></b> Principal: Michelle Ward 443-550-9510 Fax: 410-286-4050 295 Williams Road Prince Frederick, MD 20678 Assistant Principal: Regina Barnes	<b><u>Beach Elementary School</u></b> Principal: Brock Fulton 443-550-9520 Fax: 410-286-4014 7900 Old Bayside Road Chesapeake Beach, MD 20732 Assistant Principal: Alisandra Ravenel	<b><u>Calvert Middle School</u></b> Principal: Rebecca Bowen 443-550-8970 Fax: 410-286-4007 655 Chesapeake Boulevard Prince Frederick, MD 20678 Assistant Principal: Craig Jewett	<b><u>Mill Creek Middle School</u></b> Principal: Shelley Amstutz 443-550-9190 Fax: 410-286-4024 12200 Southern Connector Boulevard Lusby, MD 20657 Assistant Principal: Matt Deegan
<b><u>Calvert Elementary School</u></b> Principal: Christina Harris 443-550-9550 Fax: 410-286-4015 1450 Dares Beach Road Prince Frederick, MD 20678 Assistant Principal: Krysten Sneade	<b><u>Dowell Elementary School</u></b> Principal: Jason Patton 443-550-9480 Fax: 410-286-4016 12680 H.G. Trueman Road Lusby, MD 20657 Assistant Principal: LaNisha Robinson	<b><u>Northern Middle School</u></b> Principal: Jamie Webster 443-550-9230 Fax: 410-286-4025 2954 Chaneyville Road Owings, MD 20736 Assistant Principal: Beth Wagner	<b><u>Plum Point Middle School</u></b> Principal: Danielle Swann 443-550-9170 Fax: 410-286-4009 1475 Plum Point Road Huntingtown, MD 20639 Assistant Principal: Kristen Ratcliff
<b><u>Huntingtown Elementary School</u></b> Principal: Eric Ruffo 443-550-9360 Fax: 410-286-4005 4345 Huntingtown Road Huntingtown, MD 20639 Assistant Principal: Nicole Jimney	<b><u>Mt. Harmony Elementary School</u></b> Principal: Charles Trefl 443-550-9620 Fax: 410-286-4017 900 West Mt. Harmony Road Owings, MD 20736 Assistant Principal: Elizabeth Megonigal	<b><u>Southern Middle School</u></b> Principal: James Carpenter 443-550-9250 Fax: 410-286-4026 9615 H.G. Trueman Road Lusby, MD 20657 Assistant Principal: Jamie Smith	<b><u>Windy Hill Middle School</u></b> Principal: Mark Whidden 443-550-9310 Fax: 410-286-4027 9560 Boyd's Turn Road Owings, MD 20736 Assistant Principal: Hollie Inns
<b><u>Mutual Elementary School</u></b> Principal: Stacy Hawchurst 443-550-9650 Fax: 410-286-4018 1455 Ball Road Port Republic, MD 20676 Assistant Principal: Lynn Cunningham, Cristin Williams	<b><u>Patuxent Appeal Campus - Appeal</u></b> Principal: Michelle Beckwith 443-550-9670 Fax: 410-286-4019 11655 H.G. Trueman Road Lusby, MD 20657	<b>High</b>	
<b><u>Patuxent Appeal Campus - Patuxent</u></b> Principal: Michelle Beckwith 443-550-9710 Fax: 410-286-4020 35 Appeal Lane Lusby, MD 20657 Assistant Principal: Ryan Crowley Assistant Principal: Suzanne McGowan	<b><u>Plum Point Elementary School</u></b> Principal: Beatriz Gonzalez-Wilson 443-550-9730 Fax: 410-286-4021 1245 Plum Point Road Huntingtown, MD 20639 Assistant Principal: Jenean Deahl	<b><u>Calvert High School</u></b> Principal: Darrel Prioleau 443-550-8880 Fax: 410-286-4032 520 Fox Run Boulevard Prince Frederick, MD 20678 Assistant Principals: Dona Hook, Julie Morrison, James Rodenhaver	<b><u>Huntingtown High School</u></b> Principal: Beth Morton 443-550-8810 Fax: 410-286-4011 4125 N. Solomons Island Road Huntingtown, MD 20639 Assistant Principals: Larry Butler, Abbe Gray, Rob Lawrence, Michelle Schmidt
<b><u>St. Leonard Elementary School</u></b> Principal: Tammie Rudzinski 443-550-9760 Fax: 410-286-4022 5370 St. Leonard Road St. Leonard, MD 20685 Assistant Principal: Alkeisha Williams	<b><u>Sunderland Elementary School</u></b> Principal: Pamela Kasulke 443-550-9390 Fax: 410-286-4006 150 Clyde Jones Road Sunderland, MD 20689 Assistant Principal: Maureen Stewart	<b><u>Northern High School</u></b> Principal: Stephen Williams 443-550-8950 Fax: 410-286-4034 2950 Chaneyville Road Owings, MD 20736 Assistant Principals: Sarah Bento, Mark Gladfelter, Trey Simman, Andrea Young	<b><u>Patuxent High School</u></b> Principal: Anthony Barone 443-550-8840 Fax: 410-286-4036 12485 Southern Connector Boulevard Lusby, MD 20657 Assistant Principals: Michelle Bell, Bert Forrest, Anne Rickwood
<b><u>Windy Hill Elementary School</u></b> Principal: Kelly Cleland 443-550-9790 Fax: 410-286-4023 9550 Boyd's Turn Road Owings, MD 20736 Vice Principal: Rebecca Brennan		<b>Education Centers</b>	
		<b><u>Calvert Country School</u></b> Principal: Racheal Lindauer 443-550-9910 Fax: 410-286-4038 1350 Dares Beach Road Prince Frederick, MD 20678	<b><u>Career and Technology Academy</u></b> Principal: Carrie Akins 443-550-9940 Fax: 410-286-4039 330 Dorsey Road Prince Frederick, MD 20678 Assistant Principal: Travis Mister

### Appendix Q