

COMPREHENSIVE MAINTENANCE PLAN

FOR FY 2018

AND

EXPENDITURES

FOR FY 2017

CALVERT COUNTY PUBLIC SCHOOLS

**1305 Dares Beach Road
Prince Frederick, MD 20678**

**Daniel D. Curry, Ed.D.
Superintendent of Schools**

**Approved by Board of Education
August 10, 2017**

Table of Contents

Purpose of Comprehensive Maintenance Plan	1
Objectives of Maintenance	1
Certification	2
Management Flow Chart	3
Personnel Organization	
Carpentry	4
Painting	4
Electrical	5
Plumbing / Water	5
Heating / Welding	5
Air Conditioning / Mechanical	6
Grounds/Automotive	6
Electronics/Safety & Security	6
Operations / Warehouse and Delivery	7
Secretarial and Work Order Technician	7
Energy and Environmental	7
Maintenance Categories	
Maintenance of Plant	8
Scheduled Maintenance	8
Preventive Maintenance	8
Scheduled Repairs	9
Modernization/Alterations	9-10
Unscheduled Maintenance	10
Unscheduled Repairs	10
Vandalism and Security Related Repairs	11
Deferred Maintenance	11
Charts	
Preventive Maintenance	12-13
Vehicle Replacement Schedule	14-15
Roof Replacement Schedule	16
Painting, Interior	17
Painting, Exterior	18
Carpet Replacement	19
Floor Tile Replacement	20
Bleacher Inspection	21
Blacktop Resurfacing	22
Boiler and Pressure Vessels Inspections	23
Septic Tank, Pump Station & Grease Trap Cleaning/Replacement	24
Boiler Overhaul/Replacement	25
Oil Tank Cleaning/Testing	26
Storm Water Management Ponds-Preventative Maintenance	27
Chiller Replacement.....	28

Purpose of the Comprehensive Maintenance Plan

The Calvert County Public School System has a planned program for the Maintenance and Operation of all school facilities. This comprehensive plan for the maintenance of buildings, grounds, and equipment is designed to provide for the optimum safety and comfort of the occupants. Equally important, this plan is also designed to guarantee the maximum efficiency of each building and its equipment. It should minimize the need for major repairs or replacements and reduce the likelihood of any negative impact to instruction.

The characteristics of this maintenance plan are predicated primarily on prevention, which promotes optimal plant function. It also provides for a more deliberate approach when devising and funding the maintenance and operations sections of the budget. All maintenance efforts and costs are tracked using a system wide departmental work order system.

Objectives of Maintenance

The primary objective of the maintenance program is to have optimal plant operation capability with a vigilant eye on the conservation of energy, management of resources, and proper utilization of manpower. Corrective maintenance and preventive maintenance during the 40-year life expectancy of the building can be performed to prevent future costs and/or to minimize shutdowns and provide the best possible environment for education. Repairs or replacements are necessary to maintain the buildings and grounds, keeping them in operable condition. This can be further broken down as follows:

1. To provide buildings that function at optimal efficiency.
2. To maintain the buildings and grounds and fixed equipment in such a manner as to eliminate or reduce to acceptable levels the likelihood of fires, accidents, and safety hazards.
3. To provide continuous use of facilities without disruptions to the educational program.
4. To protect public property by planned, scheduled, preventative and repair maintenance.
5. To conserve energy and resources by ensuring that maximum results are obtained with a minimal expenditure of energy. An incentive program is in place to reward schools that conserve electricity.
6. To provide a program which will produce the maximum amount of maintenance for the monies expended.

Certification

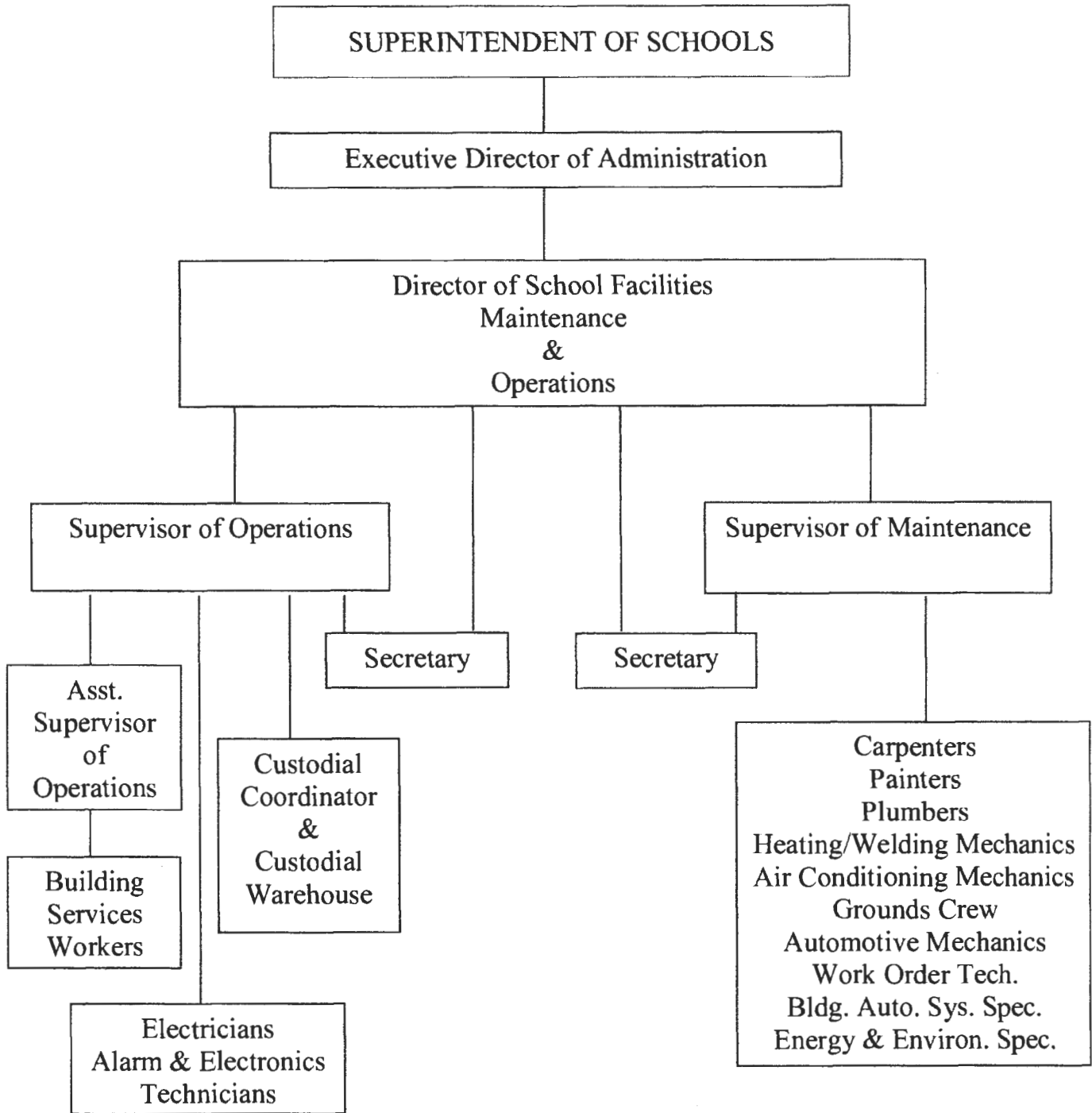
Boiler and pressure vessel certification is performed bi-annually through the Maryland Association of Boards of Education (MABE). They also perform unscheduled, on-site inspections to ensure that the Calvert County Public Schools are maintaining a safe environment for all building occupants; one in compliance with the requirements set forth by state and local regulatory agencies and the recommendations of our insurer.

Environmental matters that relate to indoor air quality, water quality, and other environmental safeguards are managed by the Director of School Facilities, specific maintenance workers, and when needed, independent testing laboratories and outside contractors. When questions regarding environmental issues are presented, the appropriate maintenance workers and/or appropriate testing laboratories and contractors are contacted to perform and to subsequently monitor issues affecting individual schools or the system as a whole. Reports and findings are returned to the schools and corrective measures are taken, if any are warranted.

We have one HVAC tech that has been trained and certified as an indoor air quality technician by American Indoor Air Quality Council. We have a Water Superintendent who is licensed/certified by Maryland Department of the Environment. Additional trade certifications and licenses are held by the majority of the Department of School Facilities Maintenance and Operations staff.

Our Energy and Environmental Specialist and Building Automation Systems Specialist continue their efforts to achieve the goals set by the Maryland Energy Administration under *Empower Maryland* and to maintain system wide Green School Certification. They will also be tasked to maintain future LEED certifications and high performance building standards. Out of 27 facilities, CCPS currently has 20 buildings that are either entirely or partially on an energy management system.

MANAGEMENT FLOW CHART



Personnel Organization

Supervisory

- Supervisor of Maintenance (1)
- Supervisor of Operations (1)
- Asst. Supervisor of Operations (1)

Carpentry

This shop has seven (7) employees. They are responsible for repairs to and construction or installation of the following:

1. Flooring – tile, carpet, cement, and wood
2. Ceiling – drywall, plaster, and acoustical
3. Hardware – locks, panic bars, door closures
4. Furniture – repair if possible
5. Roof repairs – built-up, shingles, semi-annual inspections.
6. Termite control
7. The installation of new cabinets, cork boards and book shelves
8. Annual inspection and maintenance of fire extinguishers
9. Lockers and restroom hardware
10. Any other repairs to the structure of the buildings
11. Bleachers – Annual inspections and repairs

Painting

This shop has five (5) employees. They are responsible for:

1. Interior painting
2. Exterior painting
3. Glass replacement
4. Shade and blind repairs
5. Sign preparation
6. Parking lot markings
7. Furniture refinishing
8. Drywall taping and finishing

Interior painting of schools is usually scheduled for every five to six years with interim “touch up” painting and wall repair as needed.

Exterior painting is typically scheduled every five to six years, depending on the condition of the building.

Electrical

This shop has three (3) employees. They are responsible for all repairs and upgrades to and/or installation of the following:

1. Lighting systems – interior, exterior, and emergency
2. Circuit breakers, switch-gears, disconnects
3. Instructional – Industrial Arts (shop equipment)
4. Instructional – Family and Consumer Science (washers, dryers, stoves, and food preparation equipment)
5. Instructional – Theater lighting systems, fixture & wiring repairs
6. Electrical wiring for computer labs, typing rooms, etc.
7. Kitchen/Child Nutrition equipment repairs (cooking and refig.)

Plumbing / Water

This shop has four (4) employees. They are responsible for repairs to and/or installation of the following:

1. Summer maintenance – toilets, fountains, water pumps, etc.
2. Dosing pumps on water systems
3. Reading and Recording of time elapse and flow meters for monthly water usage
4. Grease traps, sewage lines, sump pumps, storm drains
5. Kitchens – dishwashers, garbage disposals, steam kettles
6. Maintaining sewage plant equipment – air pumps, valves, blowers, etc.
7. Fire sprinkler systems, fire hydrants, science lab equipment
8. General plumbing
9. Water Testing and monitoring of all wells
10. Installation, replacement, and monitoring of backflow preventers

Heating / Welding

This shop has three (3) employees. They are responsible for repairs to, cleaning of, and maintenance of the following:

1. Boilers, burners, pumps
2. Filters, valves, fire boxes
3. Summer cleaning and servicing
4. Major repairs scheduled for summer – re-tubing boilers, rebuilding fire boxes, etc.
5. General HVAC service
6. Welding

Air Conditioning / Mechanical

This shop has eight (8) employees. They are responsible for repairing, cleaning and maintaining the following:

1. Air Conditioning units and exhaust fans
2. Chillers, cooling towers, pumps
3. Air handling equipment – pneumatic and electronic controls
4. Energy Management Systems
5. Air compressors, heat pumps
6. Filters, bearings, belts, motors
7. Instructional – refrigerators, freezers, ice machines, etc.
8. Refrigeration – ice cream boxes, milk coolers, salad bars, walk-in boxes
9. Kitchen equipment

Grounds / Automotive

This shop has eight (8) employees. They are responsible for repairs to, and/or installation of the following:

1. Minor repairs to driveways and parking lots
2. Cutting grass at all schools and buildings
3. Seeding and fertilizing
4. Repair of all vehicles, lawn mowers, tractors, and other equipment
5. Snow removal
6. Playground equipment – installation & repair
7. Athletic Field irrigation systems

Electronics / Safety & Security

This shop has three (3) employees. They are responsible for repairs to, cleaning of, and maintenance of the following:

1. Keeping all audio visual equipment in an operable condition
2. Public address systems and scoreboards
3. Master clocks and bells
4. TV and cabling repair
5. Fire alarm & security systems
6. Auditorium lighting and sound systems
7. Emergency weather radios
8. Telephone repairs and cabling within the facilities

Operations / Warehouse & Delivery

This section typically has two (2) employees but are given assistance when needed. They are responsible for the following:

1. Ordering, warehousing and distribution of all custodial supplies
2. Ordering and repairing equipment
3. Coordinating the movement of equipment between buildings
4. Moving and hauling – furniture, tables and chairs for various functions, playground equipment, supplies, etc.
5. Chair & desk repair
6. Office moves & relocations
7. Collection of lamps and books for recycling

Energy and Environmental

Two (2) employees: one responsible for recycling and Green School recertification and the other for building automation systems. Both are responsible for varying aspects of energy conservation.

Secretarial & Work Order

This section of the office has three (3) employees and they are responsible for the following:

1. Taking calls from schools and channeling them to the proper area of maintenance or operations.
2. All correspondence that enters and leaves the office, including various reports submitted to the County and State.
3. Record keeping for all areas of the School Facilities Department including; [typing reports, running payroll, leave documentation, etc.]
4. Coordinating placement of building service worker subs at all schools
5. Keeping records of all school utilities such as gas, oil, electric, water & sewer, etc.
6. Receiving all work orders that are generated and directing work crews to the areas in need
7. Provide assistance to school staff, supervisors, administrators and support staff
8. Requesting and tracking of all purchase orders, oversight of petty cash and deposits, and all other matters of finance

Maintenance Categories

Definitions and Information required:

Maintenance of Plant shall be defined as those activities which are concerned with keeping the grounds, buildings, and fixed equipment, excluding moveable equipment, at or near their original condition and efficiency, either through repairs or by replacement during the life expectancy of the building (at least 40 years). Maintenance of Plant shall further be subdivided into the following categories and subcategories:

A. SCHEDULED MAINTENANCE

Scheduled maintenance includes maintenance and repair activities which can be forecast and for which expenditure of parts and labor are based on a predictable time table of use schedule. The subcategories of scheduled maintenance are as follows:

(1) Preventive Maintenance

Our preventive maintenance program is action taken by our maintenance personnel to prevent expensive repairs and breakdowns before they occur. It is a planned program which includes lubricating, cleaning, adjusting, painting, replacement of expendable parts, and other activities designed to maintain the buildings, grounds, and fixed equipment in a condition as near to original as possible. This usually occurs during, but is not limited to, the summer. All motor driven equipment is cleaned, oiled, adjusted, repaired, and belts replaced; HVAC coils and air handling equipment are cleaned and serviced. Electrical systems, including the switch gear, circuit breakers and disconnects, are inspected and exercised; boilers are opened and cleaned and then inspected by our insurance carrier; fire alarm systems, public address systems, and emergency lighting systems are checked; major painting of building interiors and refinishing of gym floors are also scheduled during the summer months.

Preventive Maintenance Table Chart is attached.

Actual expenditure for previous fiscal year

\$ 236,089

(2) Scheduled Repairs

Scheduled repairs are actions which involve a more sizeable effort than preventive maintenance to maintain a facility in good condition. Scheduled repairs usually occur at or near the end of the specified life of an item or system. It includes such items as roof replacements or renovations, carpet/tile replacements, and boiler overhauls.

Our scheduled repair program is through our Capital Budget and required repairs and/or replacement is through contracted services.

Repair/Replacement Schedules attached for:

1. Boiler Overhaul/Replacement
2. Boiler Inspection
3. Painting
4. Roof Replacement
5. Septic Tank and Grease Trap Cleaning
6. Bleacher Repair/Replacement
7. Tile Floor Replacement
8. Carpet Replacement
9. Resurfacing Blacktop
10. Maintenance Vehicle Replacement
11. Oil Tank Servicing
12. Chiller overhaul/replacement
13. Storm water Systems maintenance

Actual expenditure for previous fiscal year

\$1,072,055

(3) Modernization and Alterations

Modernizations and alterations are actions where labor and material are expended to improve the building's original condition or to make alterations in the building configuration or functions.

Included in this area are classroom trailers for population growth. This includes code corrections, renovations, and repair work, but does not include construction of new building additions or adapting buildings to major changes in use. Most modernization and alterations are handled through our carpentry, mechanical and electrical departments.

(cont.) Items included under this category are converting open space, moving partitions, code corrections, rewiring, and, when required, obtaining the Fire Marshall's approval prior to commencing any work.

Actual expenditure for previous fiscal year

\$ 120,720

B. UNSCHEDULED MAINTENANCE

Unscheduled maintenance includes repair activities which cannot be programmed or forecasted. It includes corrections of day-to-day routine breakdowns or failures and emergency repairs. It is usually based on reports or work requests received from principals, building services managers, or other authorized building-based personnel. The subcategories of unscheduled maintenance are as follows:

(1) Unscheduled Repairs

Unscheduled repairs are actions to correct unforeseen breakdowns or failures of building systems or equipment. They include routine repairs such as failure of light fixtures and emergency repairs such as correction of pipe breakage.

Unscheduled maintenance is handled on a day-to-day basis through work orders sent into the Maintenance Department from the Principals or produced by the individual trades. Emergency situations are phoned in as they occur.

Examples of unscheduled repairs are as follows:

1. Compressor & condenser replacements
2. Pump replacement (circulating, well, etc.)
3. Small equipment repair
4. Electric switch gear
5. Vehicle repairs
6. Furniture repairs
7. Breakage resulting from prolonged use or misuse of equipment and furnishings
8. Weather related damages

Actual expenditures for previous fiscal year

\$ 1,707,362

(2) Vandalism and Security Related Repairs

A vandalism and security related repair item is one which requires the expenditure of labor and material to restore it to its original condition after it has been damaged, or provide temporary protection in some manner. It does not generally include modifications of the facilities for the purpose of improving building security such as installation or enlargement of intrusion systems.

Here are some examples of vandalism that occurs on CCPS property arranged in order of prevalence:

1. Graffiti
2. Broken windows
3. Grounds damage (includes tire ruts and cut fences)
4. Random destruction of property (lockers, doors, walls, etc.)
5. Expended fire extinguishers

Depending on the nature and extent of vandalism, all repairs are handled within a 24-hour time period; fire extinguishers are replaced, graffiti removed, windows replaced, etc.

Actual expenditures for pervious fiscal year

\$ 12,696

C. DEFERRED MAINTENANCE

- (1) Deferred maintenance includes maintenance and repair activities which have been delayed or postponed due to lack of funds or personnel or which have been delayed pending some future decision regarding the building such as major renovation, disposal, or change of use. It may include any of the above described categories of maintenance.

Anticipated expenditures

\$ 339,772

PREVENTIVE MAINTENANCE CHART

for
Maintenance (MAINT.), Operations (OPER.), and Contracted Services (OTHER)

ITEMS	PROCEDURE	Responsibility			Frequency					
		MAINT.	OPER.	OTHER	DAILY	WKLY	MONTH	QUART	SEMI A	ANNUAL
Fire Extinguishers	Check, Change & Inspect	X	X	X			X			X
Sprinkler Systems	Check & Inspect	X	X	X				X		X
Sprinkler Systems	Check Flow, Test Switches & Bells	X							X	
Kitchen Hood Ansul System	Inspection			X					X	
State Fire Inspection	Fire Marshall Inspection		X	X						X
Emergency Generators	Test Run One-half Hour	X	X			X		X		
Health Inspection - Kitchen	Health Department Inspections			X					X	
Risk Inspections	Building/Equip. Safety Inspections	X	X	X						X
Oil Burner Cleaning & Inspection	Clean, Set Clearances, Check Pump Pressure, Check Start Up	X								X
Boiler Tube Cleaning	Brush Clean Boiler Tubes & Sheets	X								X
Pest Control (IPM)	Monitor & Appropriate Action			X			X			
Roof Cleaning	Remove Debris, Clean Drains	X	X			X			X	
Venetian Blind Shade	Check Operation, Repair	X	X			X			X	
Boiler Inspection	Inspection	X	X	X	X		X			X
Maintenance Vehicles	Change Oil, Filters, and Grease	X			3,000 - 5,000 Miles					
	Tune-up	X			30,000 Miles or as recommended by manufacturer					
Roof Inspection	Inspect and assess	X							X	X
Storm Water Management	Inspect and maintain	X								X

Updated 7/07/17

PREVENTIVE MAINTENANCE CHART

for
Maintenance (MAINT.), Operations (OPER.), and Contracted Services (OTHER)

ITEMS Mechanical Equipment	PROCEDURE	Responsibility			Frequency					
		MAINT.	OPER.	OTHER	DAILY	WKLY	MONTH	QUART	SEMI A	ANNUAL
Oil Burners	Check Operation	X	X		X	X	X			
Air Compressors	Check Operation, Oil, Drain Tank, Air Filter, Belts	X	X		X		X			
Air Conditioner Units	Check Operations and clean coils*	X	X		X	X	X			X*
Air Handling Equipment	Grease, Oil, Clean Filters, Belts, Check Operations	X	X		X		X		X	
Condensers and Coils for Refrigerators and Freezers	Clean and Oil Motors Vacuum & Clean Condenser Coils	X							X	
Return & Supply Grills	Clean		X							X
Motors	Check Belts, Oil or Grease	X							X	
Pumps	Lubricate Bearings Clean Strainers, Check Leaks, Couplings, Flow	X	X		X	X				X
Water Coolers	Vacuum & Clean Condenser Coils	X							X	
Chillers	Dismantle, inspect, and clean	X								X
Cooling Towers	Clean, Check Belts, Grease, Water Treatment	X			X	X				X
Chlorinators	Check Pump, Solution Level & Test Concentration		X		X		X			
Oil Tanks	Check oil levels and perform inspections		X	X	X		X			X

Updated 7/07/17

2018 MAINTENANCE VEHICLE REPLACEMENT SCHEDULE

YEAR	MAKE	STYLE	USE	2018	2019	2020	2021	2022	2023
1990	GMC	Flatbed	Brine Spreader				X		
1995	Ford	Pick-up	CHS/Untagged/Off road		X*				
1995	GMC	Van	HHS/Untagged/Off road	X*					
1997	Chevy	Lumina	General	D					
1997	Ford	F250 Pick-up	Auto			X			
1997	Ford	Van	PHS/Untagged/Off road		X*				
1998	Chevy	Box Van	Carpentry		X				
1999	Ford	F250	Roofer	X					
2000	Chevy	Box Van	Warehouse		X				
2001	Ford	F750 Dump	Grounds				X		
2002	Chevy	Van	Electronics	D					
2002	Ford	E250	HVAC	D					
2002	GMC	Box Van	Grounds			X			
2003	Chevy	Cavalier	Fleet				X		
2003	Chevy	G3500	Welding		X				
2003	Chevy	S-10 Pick-up	NHS/Untagged/Off road				X*		
2003	Ford	E250 Van	Electronics		X				
2004	Chevy	Cavalier	Fleet					X	
2004	Chevy	G250 Van	HVAC	D					
2004	Chevy	Impala	Fleet			X			
2004	Chevy	K2500 HD	Grounds		X				
2004	Chevy	Van	HVAC New Hire			X			
2004	Chevy	Van	HVAC New Hire			X			
2004	Chevy	Van	Painting				X		
2004	GMC	C7500	Furniture Warehouse					X	
2005	Chevy	K2500 HD	Grounds			X			
2005	GMC Truck	Canyon	Water					X	
2005	GMC Truck	Canyon	Water					X	
2006	Chevy	Van	Carpentry	D					
2006	Ford	Van	HVAC	D					
2006	GMC	Van	Carpentry	D					
2006	GMC	W3500 Box Van	Custodial			X			
2006	GMC	Savanna	Carpentry		X				
2006	GMC	Savanna	Grounds			X			
2006	Toyota	Van	Fleet				X		
2007	Chevy	G2500	Grounds				X		
2007	Ford	Van	Spare				X		
2007	GMC	Savanna	Electronics				X		

X = Purchased Replacement (proposed) X* = In House Replacement D = Pending Disposal

Updated 7/6/2017

2018 MAINTENANCE VEHICLE REPLACEMENT SCHEDULE									
YEAR	MAKE	STYLE	USE	2018	2019	2020	2021	2022	2023
2008	Ford	E350 Van	Spare				X		
2008	GMC	K2500 HD	Grounds		X				
2010	Ford	E350 Van	HVAC			X			
2010	GMC	K2500 HD	Grounds			X			
2011	Dodge	Dump	Grounds				X		
2011	Dodge	Dump	Grounds				X		
2012	GMC	Canyon	Custodial					X	
2013	International	4300 Dump Truck	Grounds						
2013	International	4300 Dump Truck	Grounds						
2014	Ford	E250	Electric						X
2014	Ford	F250 4x4	Grounds						X
2015	Ford	F350 4x4	Auto Service Truck						
2016	Ford	F350 4x4	Painters						
2016	Ford	F350 4x4	Grounds						
2016	Ford	Transit 150 Van	Electronics						
2016	Ford	Transit 150 Van	Carpentry						
2016	Ford	Transit 150 Van	Electric						
2016	Ford	Transit 150 Van	Electric						
2016	Ford	Transit 150 Van	HVAC						
2016	Ford	Transit 150 Van	HVAC						
2016	Ford	Transit 150 Van	HVAC						
2016	Ford	Transit 150 Van	Carpentry						
2016	Ford	Transit Connect	Painters						
2016	Ford	Transit Connect	Painters						
2016	Ford	Transit Connect	Painters						
2017	Ford	Escape	New Construction						
2017	Ford	Escape	New Construction						
2017	Ford	Escape	Fleet						
2017	Ford	Escape	Fleet						
2017	Ford	F350 Plumbers Tr	HVAC						
2017	Ford	F350 Plumbers Tr	HVAC						
2017	Ford	Transit 150 Van	Carpentry						
2017	Ford	Transit 150 Van	Carpentry						
2017	Ford	Transit 150 Van	HVAC						
2017	Ford	Transit 150 Van	HVAC						
2017	Ford	Transit 150 Van	HVAC						
2017	Ford	Transit 150 Van	HVAC						
2017	Ford	Transit Connect	HVAC						

X = Purchased Replacement (proposed) X* = In House Replacement D = Pending Disposal

Updated 7/6/2017

Roof Replacement Schedule

School	Built	Renovated/Add.	Re-Roofed	2018	2019	2020	2021	2022	2023
Appeal Elementary	1949	1956,1958,1971,1989,2005	2013*						
Barstow Elementary	2008								
Beach Elementary	1953	1971,1981,2006	1998/2008						
Brooks Administrative Center	1950	1973	1998						
Career & Technology Academy	1970	2005				X *			
Calvert Country	1958	1983	2010						
Calvert Elementary	1964	1974,1981,2007	1999					X *	
Calvert Middle	2010								
Calvert High	2012	2014							
Planetarium	1977		1998						
Field House	1963				Z				
Dowell Elementary	1999	2007							
Hunting Creek	1944	1960	1999						
Huntingtown Elementary	1971	1980,2006	2006						X *
Huntingtown High	2004								
Mill Creek Middle	1999								
Mt. Harmony Elementary	1961	1970,1975,2007	1999						
Mutual Elementary	1975	1989,2007,2014	2005						
Northern Middle	1976		1993						
Northern High	1972	1985,1992	1999						
Patuxent Elementary	1992	2006							X *
Patuxent High	1996		2013*						
Plum Point Elementary	1991	2006	2013*						
Plum Point Middle	1992								
Southern Middle	1979	1996	2006						
St. Leonard Elementary	1996	2006							
Sunderland Elementary	1988	2005	2013*						
Windy Hill Elementary	1996	2006							
Windy Hill Middle	1998								
Maintenance Warehouse	1978								
Storage Shed	TIN								
Carpentry Shop	TIN								
Auto Shop	TIN								

* Partial Replacement

X = Flat Roof Y = Metal Roof Z = Asphalt Shingle Roof

Updated 7/06/17

PAINTING - INTERIOR

School	Built	Renovated/Add.	2018	2019	2020	2021	2022	2023
Appeal Elementary	1949	1956,1958,1971,1989,2005		X				
Barstow Elementary	2008					X		
Beach Elementary	1953	1971,1981,2006			X			
Brooks Administrative Center	1950	1973	X					
Career & Technology Academy	1970	2005					X	
Calvert Country	1958	1983		X				
Calvert Elementary	1964	1974,1981,2007						X
Calvert Middle	2010			X				
Calvert High	2012	2014				X		
Planetarium	1977			X				
Field House	1963							X
Dowell Elementary	1999	2007				X		
Hunting Creek	1944	1960						
Huntingtown Elementary	1971	1980,2006					X	
Huntingtown High	2004		X					X
Mill Creek Middle	1999			X				
Mt. Harmony Elementary	1961	1970,1975,2007	X				X	
Mutual Elementary	1975	1989,2007,2014			X			
Northern Middle	1976				X			
Northern High	1972	1985,1992						
Patuxent Elementary	1992	2006	X					
Patuxent High	1996		X					
Plum Point Elementary	1991	2006					X	
Plum Point Middle	1992				X			
Southern Middle	1979	1996				X		
St. Leonard Elementary	1996	2006			X			
Sunderland Elementary	1988	2005			X			
Windy Hill Elementary	1996	2006						X
Windy Hill Middle	1998			X				
Maintenance Warehouse	1978							X
Carpentry/Paint Shop	Unkn						X	

Interior painting includes lobby, hallways, cafeteria, gym, restrooms, media center, & auditorium. Classrooms are painted as needed; approx. every 5-6 yrs

Updated 7/06/17

PAINTING - EXTERIOR

School	Built	Renovated/Add.	2018	2019	2020	2021	2022	2023
Appeal Elementary	1949	1956,1958,1971,1989,2005	X					
Barstow Elementary	2008					X		
Beach Elementary	1953	1971,1981,2006		X				
Brooks Administrative Center	1950	1973		X				
Career & Technology Academy	1970	2005			X			
Calvert Country	1958	1983		X				
Calvert Elementary	1964	1974,1981,2007			X			
Calvert Middle	2010						X	
Calvert High	2012	2014	X					
Planetarium	1977			X				
Field House	1963				X			
Dowell Elementary	1999	2007			X			
Hunting Creek	1944	1960						X
Huntingtown Elementary	1971	1980,2006				X		
Huntingtown High	2004		X					
Mill Creek Middle	1999			X				
Mt. Harmony Elementary	1961	1970,1975,2007	X					
Mutual Elementary	1975	1989,2007,2014	X					
Northern Middle	1976							X
Northern High	1972	1985,1992						
Patuxent Elementary	1992	2006	X					
Patuxent High	1996					X		
Plum Point Elementary	1991	2006						X
Plum Point Middle	1992				X			
Southern Middle	1979	1996				X		
St. Leonard Elementary	1996	2006						X
Sunderland Elementary	1988	2005	X					
Windy Hill Elementary	1996	2006					X	
Windy Hill Middle	1998						X	
Maintenance Warehouse	1978						X	
Carpentry/Paint Shop	Unkn							

Exterior painting is done on an "as needed" basis; approx. every 5-6 years

Updated 7/05/17

CARPET REPLACEMENT

School	Built	Renovated/Add.	2018	2019	2020	2021	2022	2023
Appeal Elementary	1949	1956,1958,1971,1989,2005					X*	
Barstow Elementary	2008							X*
Beach Elementary	1953	1971,1981,2006						
Brooks Administrative Center	1952	1973	X*			X*		
Career & Technology Academy	1970	2005						
Calvert Country	1958	1983						
Calvert Elementary	1964	1974,1981,2007			X*			
Calvert Middle	2010							
Calvert High	2012	2014						
Planetarium	1977							
Field House	1963							
Dowell Elementary	1999	2007	X*					
Hunting Creek	1944	1960						
Huntingtown Elementary	1971	1980,2006		X*				
Huntingtown High	2004					X*	X*	
Mill Creek Middle	1999			X*				
Mt. Harmony Elementary	1961	1970,1975,2007			X*			
Mutual Elementary	1975	1989,2007,2014			X*			
Northern Middle	1976							
Northern High	1972	1985,1992						
Patuxent Elementary	1992	2006						
Patuxent High	1996		X*	X*				
Plum Point Elementary	1991	2006		X*				
Plum Point Middle	1992		X*	X*				
Southern Middle	1979	1996			X*			
St. Leonard Elementary	1996	2006						
Sunderland Elementary	1988	2005						X*
Windy Hill Elementary	1996	2006				X*		
Windy Hill Middle	1999					X*		

*Due to size and funding, some replacements require multiple years and are only partial in scope.

Updated 7/06/17

FLOOR TILE REPLACEMENT

School	Built	Renovated/Add.	2018	2019	2020	2021	2022	2023
Appeal Elementary	1949	1956,1958,1971,1989,2005						
Barstow Elementary	2008							
Beach Elementary	1953	1971,1981,2006						
Brooks Administrative Center	1950	1973				X*		
Career & Technology Academy	1970	2005						X*
Calvert Country	1958	1983						
Calvert Elementary	1964	1974,1981,2007			X*			
Calvert Middle	2010							
Calvert High	2012	2014						
Planetarium	1977							
Field House	1963							
Dowell Elementary	1999	2007						
Hunting Creek	1944	1960						
Huntingtown Elementary	1971	1980,2006		X*				
Huntingtown High	2004					X*	X*	
Mill Creek Middle	1999							
Mt. Harmony Elementary	1961	1970,1975,2007		X*				
Mutual Elementary	1975	1989,2007,2014			X*			
Northern Middle	1976							
Northern High	1972	1985,1992						
Patuxent Elementary	1992	2006	X*					
Patuxent High	1996							
Plum Point Elementary	1991	2006						
Plum Point Middle	1992				X*			
Southern Middle	1979	1996					X*	
St. Leonard Elementary	1996	2006						
Sunderland Elementary	1988	2005						
Windy Hill Elementary	1996	2006				X*		
Windy Hill Middle	1998							X*
Maintenance Warehouse	1978							

* Most floor tile replacements are only partial and are done on an "as needed" basis

Updated 7/06/17

BLEACHER INSPECTION - REPAIR/REPLACEMENT

School	Built	Renovated/Add.	2018	2019	2020	2021	2022	2023
Appeal Elementary	1949	1956,1958,1971,1989,2005						
Barstow Elementary	2008							
Beach Elementary	1953	1971,1981,2006						
Brooks Administrative Center	1950	1973						
Career & Technology Academy	1970	2005						
Calvert Country	1958	1983						
Calvert Elementary	1964	1974,1981,2007						
Calvert Middle	2010		X	X	X	X	X	X
Calvert High	2012	2014	X	X	X	X	X	X
Planetarium	1977							
Field House	1963							
Dowell Elementary	1999	2007						
Hunting Creek	1944	1960						
Huntingtown Elementary	1971	1980,2006						
Huntingtown High	2004		X	X	X	X	X	X
Mill Creek Middle	1999		X	X	X	X	X	X
Mt. Harmony Elementary	1961	1970,1975,2007						
Mutual Elementary	1975	1989,2007,2014						
Northern Middle	1976		X	X	X	X	X	X
Northern High	1972	1985,1992	X	X	X	X	X	X
Patuxent Elementary	1992	2006						
Patuxent High	1996		X	X	X	X	X	X
Plum Point Elementary	1991	2006						
Plum Point Middle	1992		X	X	X	X	X	X
Southern Middle	1979	1996	X	X	X	X	X	X
St. Leonard Elementary	1996	2006						
Sunderland Elementary	1988	2005						
Windy Hill Elementary	1996	2006						
Windy Hill Middle	1998		X	X	X	X	X	X

All bleachers are inspected annually and repaired as needed X = Inspect Y = Replacement Updated 7/06/17

BLACKTOP RESURFACING (Seal Coating) / REPAVING

School	Built	Renovated/Add.	2018	2019	2020	2021	2022	2023
Appeal Elementary	1949	1956, 1958, 1971, 1989, 2005			X			
Barstow Elementary	2008			X				
Beach Elementary	1953	1971, 1981, 2006						
Brooks Administrative Center	1950	1973	Z					
Career & Technology Academy	1970	2005						
Calvert Country	1958	1983						
Calvert Elementary	1964	1974, 1981, 2007						X
Calvert Middle	2010							
Calvert High	2012	2014				X		
Planetarium	1977							
Field House	1963							
Dowell Elementary	1999	2007			X			
Hunting Creek	1944	1960						
Huntingtown Elementary	1971	1980, 2006				Z		
Huntingtown High	2004							
Mill Creek Middle	1999							
Mt. Harmony Elementary	1961	1970, 1975, 2007	X					
Mutual Elementary	1975	1989, 2007, 2014			X			
Northern Middle	1976							
Northern High	1972	1985, 1992						
Patuxent Elementary	1992	2006					X	
Patuxent High	1996		Y	Y				
Plum Point Elementary	1991	2006	Y					Y
Plum Point Middle	1992							
Southern Middle	1979	1996						
St. Leonard Elementary	1996	2006					X	
Sunderland Elementary	1988	2005						
Windy Hill Elementary	1996	2006	Y					
Windy Hill Middle	1998							
Maintenance Warehouse	1978							

X = Crack fill, seal coating, & restriping; may include some minor repairs

Y = Repave (partially)

Z = Repave (entirely)

Updated 7/06/17

BOILER AND PRESSURE VESSELS INSPECTIONS

School	Built	Renovated/Add.	2018	2019	2020	2021	2022	2023
Appeal Elementary	1949	1956,1958,1971,1989,2005	X*	X	X*	X	X*	X
Barstow Elementary	2008		Y	Y*	Y	Y*	Y	Y*
Beach Elementary	1953	1971,1981,2006	X*	X	X*	X	X*	X
Brooks Administrative Center	1950	1973	X	X*	X	X*	X	X*
Career & Technology Academy	1970	2005	X*	X	X*	X	X*	X
Calvert Country	1958	1983	X	X*	X	X*	X	X*
Calvert Elementary	1964	1974,1981,2007	X	X*	X	X*	X	X*
Calvert Middle	2010		Y	Y*	Y	Y*	Y	Y*
Calvert High	2012	2014	X	X*	X	X*	X	X*
Planetarium	1977							
Field House	1963							
Dowell Elementary	1999	2007	X*	X	X*	X	X*	X
Hunting Creek	1944	1960	X*	X	X*	X	X*	X
Huntingtown Elementary	1971	1980,2006	X*	X	X*	X	X*	X
Huntingtown High	2004		X	X*	X	X*	X	X*
Mill Creek Middle	1999		Y	Y*	Y	Y*	Y	Y*
Mt. Harmony Elementary	1961	1970,1975,2007	X	X*	X	X*	X	X*
Mutual Elementary	1975	1989,2007,2014	X*	X	X*	X	X*	X
Northern Middle	1976		X*	X	X*	X	X*	X
Northern High	1972	1985,1992	X	X*	X	X*	X	X*
Patuxent Elementary	1992	2006	X	X*	X	X*	X	X*
Patuxent High	1996		X*	X	X*	X	X*	X
Plum Point Elementary	1991	2006	X	X*	X	X*	X	X*
Plum Point Middle	1992		X	X*	X	X*	X	X*
Southern Middle	1979	1996	X	X*	X	X*	X	X*
St. Leonard Elementary	1996	2006	X*	X	X*	X	X*	X
Sunderland Elementary	1988	2005	X	X*	X	X*	X	X*
Windy Hill Elementary	1996	2006	X*	X	X*	X	X*	X
Windy Hill Middle	1998		X*	X	X*	X	X*	X
Maintenance Warehouse	1978							
Paint Shop	Unkn		X	X*	X	X*	X	X*

Y = Pressure Vessels only X = Boilers and Pressure Vessels

Inspections are completed yearly by Maintenance boiler mechanics and bi-annually by MABE * using outside contractors

7/6/2017

SEPTIC TANK , PUMP STATION & GREASE TRAP CLEANING/REPLACEMENT

School	Built	Renovated/Add.	2018	2019	2020	2021	2022	2023
Appeal Elementary	1949	1956,1958,1971,1989,2005	X	X	X	X	X	X
Barstow Elementary	2008		X	X	X	X	X	X
Beach Elementary	1953	1971,1981,2006	X	X	X	X	X	X
Brooks Administrative Center	1950	1973	X	X	X	X	X	X
Career & Technology Academy	1970	2005	X	X	X	X	X	X
Calvert Country	1958	1983	X	X	X	X	X	X
Calvert Elementary	1964	1974,1981,2007	X	X	X	X	X	X
Calvert Middle	2010		X	X	X	X	X	X
Calvert High	2012	2014	X	X	X	X	X	X
Dowell Elementary	1999	2007	X	X	X	X	X	X
Hunting Creek	1944	1960	X	X	X	X	X	X
Huntingtown Elementary	1971	1980,2006	X	X	X	X	X	X
Huntingtown High	2004		X	X	X	X	X	X
Mill Creek Middle	1999		X	X	X	X	X	X
Mt. Harmony Elementary	1961	1970,1975,2007	X	X	X	X	X	X
Mutual Elementary	1975	1989,2007,2014	X	X	X	X	X	X
Northern Middle	1976		X	X	X	X	X	X
Northern High	1972	1985,1992	X	X	X	X	X	X
Patuxent Elementary	1992	2006	X	X	X	X	X	X
Patuxent High	1996		X	X	X	X	X	X*
Plum Point Elementary	1991	2006	X	X	X	X	X	X
Plum Point Middle	1992		X	X	X	X	X	X
Southern Middle	1979	1996	X	X	X	X	X	X
St. Leonard Elementary	1996	2006	X	X	X	X	X	X
Sunderland Elementary	1988	2005	X	X	X	X	X	X
Windy Hill Elementary	1996	2006	X	X	X	X	X	X
Windy Hill Middle	1998		X	X	X	X	X	X

Grease traps and pumping stations are pumped out and cleaned annually during the summer.
 Septic tanks are pumped and cleaned on an "as needed" basis. * Replacements will occur only when needed.

Updated 7/06/17

BOILER OVERHAUL/REPLACEMENT

School	Built	Renovated/Add.	2018	2019	2020	2021	2022	2023
Appeal Elementary	1949	1956,1958,1971,1989,2005			X			
Barstow Elementary	2008							
Beach Elementary	1953	1971,1981,2006						
Brooks Administrative Center	1950	1973						
Career & Technology Academy	1970	2005						
Calvert Country	1958	1983			X			
Calvert Elementary	1964	1974,1981,2007						
Calvert Middle	2010							
Calvert High	2012	2014						
Planetarium	1977							
Field House	1963							
Dowell Elementary	1999	2007						
Hunting Creek	1944	1960						
Huntingtown Elementary	1971	1980,2006						
Huntingtown High	2004							
Mill Creek Middle	1999							
Mt. Harmony Elementary	1961	1970,1975,2007			X			
Mutual Elementary	1975	1989,2007,2014						
Northern Middle	1976							
Northern High	1972	1985,1992						
Patuxent Elementary	1992	2006						
Patuxent High	1996							
Plum Point Elementary	1991	2006						
Plum Point Middle	1992							
Southern Middle	1979	1996						
St. Leonard Elementary	1996	2006						
Sunderland Elementary	1988	2005						
Windy Hill Elementary	1996	2006						
Windy Hill Middle	1998							
Maintenance Warehouse	1978							
Paint Shop	Unkn							

All boilers are cleaned and checked annually

Updated 7/06/17

IN GROUND OIL TANK INSPECTIONS / TESTING

School	Built	Renovated/Add.	2018	2019	2020	2021	2022	2023
Appeal Elementary	1949	1956,1958,1971,1989,2005	X					X
Barstow Elementary	2008							
Beach Elementary	1953	1971,1981,2006			X			
Brooks Administrative Center	1950	1973				X		
Career & Technology Academy	1970	2005						
Calvert Country	1958	1983						
Calvert Elementary	1964	1974,1981,2007						
Calvert Middle	2010							
Calvert High	2012	2014						
Planetarium	1977							
Field House	1963							
Dowell Elementary	1999	2007						
Hunting Creek	1944	1960	X					X
Huntingtown Elementary	1971	1980,2006				X		
Huntingtown High	2004			X				
Mill Creek Middle	1999							
Mt. Harmony Elementary	1961	1970,1975,2007	X					X
Mutual Elementary	1975	1989,2007,2014				X		
Northern Middle	1976					X		
Northern High	1972	1985,1992				X		
Patuxent Elementary	1992	2006	X					X
Patuxent High	1996				X	X		
Plum Point Elementary	1991	2006	X					X
Plum Point Middle	1992				X			
Southern Middle	1979	1996						
St. Leonard Elementary	1996	2006				X		
Sunderland Elementary	1988	2005			X			
Windy Hill Elementary	1996	2006	X					X
Windy Hill Middle	1998		X					X
Maintenance Warehouse	1978							
Paint Shop	Unkn							

All tanks are fiberglass. A certified contractor performs yearly containment sump inspections and a complete tank inspection 15 years after initial installation and then every 5 years thereafter.

Updated 7/06/17

STORM WATER MANAGEMENT PONDS-PREVENTATIVE MAINTENANCE

School	Built	Renovated/Add.	2018	2019	2020	2021	2022	2023
Appeal Elementary	1949	1956,1958,1971,1989,2005	X	X	X	X	X	X
Barstow Elementary	2008		X	X	X	X	X	X
Beach Elementary	1953	1971,1981,2006	X	X	X	X	X	X
Brooks Administrative Center	1950	1973						
Career & Technology Academy	1970	2005	X	X	X	X	X	X
Calvert Country	1958	1983	X	X	X	X	X	X
Calvert Elementary	1964	1974,1981,2007						
Calvert Middle	2010		X	X	X	X	X	X
Calvert High	2012	2014	X	X	X	X	X	X
Planetarium	1977							
Field House	1963							
Dowell Elementary	1999	2007	X	X	X	X	X	X
Hunting Creek	1944	1960						
Huntingtown Elementary	1971	1980,2006						
Huntingtown High	2004		X	X	X	X	X	X
Mill Creek Middle	1999		X	X	X	X	X	X
Mt. Harmony Elementary	1961	1970,1975,2007	X	X	X	X	X	X
Mutual Elementary	1975	1989,2007,2014						
Northern Middle	1976		X	X	X	X	X	X
Northern High	1972	1985,1992	X	X	X	X	X	X
Patuxent Elementary	1992	2006	X	X	X	X	X	X
Patuxent High	1996		X	X	X	X	X	X
Plum Point Elementary	1991	2006	X	X	X	X	X	X
Plum Point Middle	1992		X	X	X	X	X	X
Southern Middle	1979	1996	X	X	X	X	X	X
St. Leonard Elementary	1996	2006	X	X	X	X	X	X
Sunderland Elementary	1988	2005	X	X	X	X	X	X
Windy Hill Elementary	1996	2006	X	X	X	X	X	X
Windy Hill Middle	1998		X	X	X	X	X	X
Maintenance Warehouse	1978							
Paint Shop	Unkn							

X = Inspected and maintained annually

Updated 7/06/17

Chiller/Cooling Tower Replacement & Minor Overhauls

School	Built	Renovated/Add.	2018	2019	2020	2021	2022	2023
Appeal Elementary	1949	1956,1958,1971,1989,2005			X			
Barstow Elementary	2008							
Beach Elementary	1953	1971,1981,2006						
Brooks Administrative Center	1950	1973						
Career & Technology Academy	1970	2005						
Calvert Country	1958	1983			X			
Calvert Elementary	1964	1974,1981,2007						
Calvert Middle	2010							
Calvert High	2012	2014						
Dowell Elementary	1999	2007						
Hunting Creek	1944	1960						
Huntingtown Elementary	1971	1980,2006						
Huntingtown High	2004							
Mill Creek Middle	1999							
Mt. Harmony Elementary	1961	1970,1975,2007			Y			
Mutual Elementary	1975	1989,2007,2014						
Northern Middle	1976							
Northern High	1972	1985,1992						
Patuxent Elementary	1992	2006						
Patuxent High	1996			X / Y				
Plum Point Elementary	1991	2006						
Plum Point Middle	1992		X					
Southern Middle	1979	1996						
St. Leonard Elementary	1996	2006						
Sunderland Elementary	1988	2005						X
Windy Hill Elementary	1996	2006						
Windy Hill Middle	1998							X

X = Chiller Y = Cooling Tower * Minor Overhauls

Updated 7/06/17